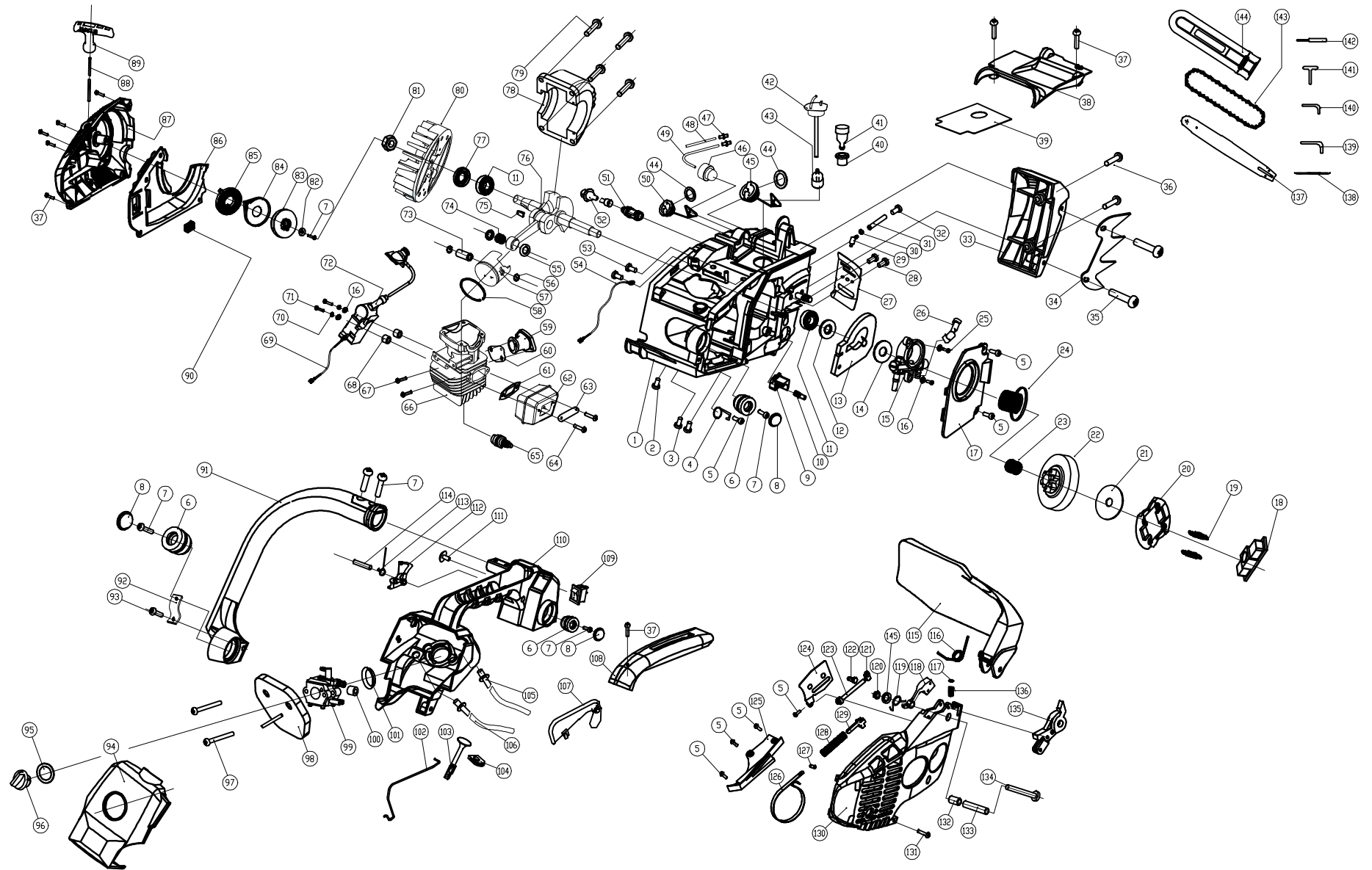


# HEL2530



# SPARE PARTS LIST

序号	名称	NAME	数量
1	油箱	TANK ASSY	1
2	内梅花一字槽螺钉M5*14	SCREW M5*14	1
3	内六角螺钉M5*20	SCREW M5*20	2
4	挂钩	POTHOOK	1
5	十字自攻螺钉ST4.2*13	SCREW ST4.2*13	3
6	减震座	PAD RUBBER	3
7	十字槽盘头自攻螺钉ST4.8*14	SCREW ST4.8*14	6
8	防尘盖	PLUG-PAD	3
9	挡链块	CHAIN CATCHER	1
10	异形螺钉	SPECIAL SCREW	1
11	轴承6001	BEARING-BALL 6001	2
12	右油封12*28*6	LEFT OIL RING 12*28*6	1
13	机油泵海绵	SPONG-WASHER OIL PUMP	1
14	机油泵垫片	WASHER OIL PUMP	1
15	机油泵	OIL PUMP	1
16	平垫 $\phi$ 4	WASHER $\phi$ 4	4
17	机油泵盖板	SHIELD-OIL PUMP	1
18	保持架	CLUTCH RETAINER	1
19	离合器拉簧	SPRING-DRUM CLUTCH	2
20	蹄块	CLUTCH SUPPORT	2
21	离合器垫片	WASHER-DRUM CLUTCH	1
22	离合器外壳	COVER-DRUM CLUTCH	1
23	滚针轴承 $\phi$ 10 $\times$ $\phi$ 13 $\times$ 13	BEARING-NEEDLE	1
24	涡轮	WORM GEAR	1
25	内六角花型盘头螺钉M4*14	SCREW M4*14	2
26	机油泵出油管	HOSE-CHAIN OIL OUTLET	1
27	出油口盖板	COVER-OIL OUTLET	1
28	花形圆柱头自攻螺钉ST4.2*11	SCREW ST4.2*11	2
29	负压嘴	HOSE-PULSE	1
30	卡簧	HOSE-PULSE RING-SNAP	1
31	负压管	PULSE	1
32	内梅花螺钉ST4.2*9.5	SCREW ST4.2*9.5	1
33	挡木块	CATCHER	1
34	齿形板	SPIKE	1
35	自攻螺钉ST4.8*16	SCREW ST4.8*16	2
36	自攻螺钉ST4.8*13	SCREW ST4.8*13	2
37	自攻螺钉ST4.2*16	SCREW ST4.2*16	8
38	上盖	COVER-TOP	1
39	防油纸垫	PAPER GASKET	1
40	平衡器座	SUPPORT-BALANCE	1

41	平衡器	BALANCER	1
42	燃油管座总成	SUPPORT-HOSE OIL	1
43	燃油滤	FUEL FILTER	1
44	旋盖密封垫	GASKET-OIL CAP	1
45	机油口旋盖	OIL CAP	1
46	油泡	OIL VACUOLE-CARBURETOR	1
47	油管接头	TIE-IN-HOSE OIL	2
48	回油管	OIL TUBE-RETURN	1
49	进油管	BOOT-INTAKE	1
50	燃油口旋盖	FUEL-CAP	1
51	机油滤清器	OIL FILTER	1
52	机油泵进油管	HOSE OIL-OIL PUMP	1
53	内六角组合螺钉M5*16	SCREW M5*16	2
54	开关线	SWITCH LINE	1
55	轴承挡圈	RING SNAP	2
56	活塞销卡簧	SNAP RING	2
57	活塞	PISTON	1
58	活塞环	PINSTON RING	1
59	进气管	HOSE-AIR	1
60	进气管密封垫	WASHER INTAKE CARBURETOR	1
61	消音器密封垫	WASHER MUFFLER	1
62	消音器	MUFFLER	1
63	消音器盖板	SHIELD-MUFFLER	1
64	内六角螺钉M5*45	SCREW M5*45	2
65	火花塞	SPARK PLUG	1
66	气缸体	CYLINDER	1
67	内六角螺钉M4*12	SCREW M4*12	2
68	高压包垫块	PAD-ELECTRIC IGNITION	2
69	熄火线	WIRE-STOP	1
70	弹垫 $\varnothing 4$	GASKET $\varnothing 4$	2
71	内六角螺钉M4*20	SCREW M4*20	2
72	高压包带阻尼线	ELECTRIC IGNITION	1
73	活塞销	PINTON PIN	1
74	滚针轴承8*11*9	NEEDLE BEARING-BALL	1
75	半圆键3*10	WOODRUFF KEY 3*10	1
76	曲轴连杆总成	CRANK SHAFT ASSY	1
77	左油封12*22*5	LEFT OIL RING 12*22*5	1
78	气缸盖	COVER-CYLINDER	1
79	内六角螺钉M5*20	SCREW M5*20	4
80	飞轮	FLY-WHEEL	1
81	镀锌法兰螺母M8*1	NUT M8*1	1
82	绳轮垫片	WASHER-PULLEY	1

83	绳轮	PULLEY-STARTER	1
84	盘簧压盖	COVER-SPRING STARTER	1
85	启动盘簧	SPRING-STARTER	1
86	导流罩	BAFFLER-FAN	1
87	启动器罩	HOUSING-STARTER	1
88	启动拉绳	ROPE-STARTER	1
89	启动手柄	HANDLE-STARTER	1
90	进气口座	HOSE AIR SEAT	1
91	握把	HANDLE	1
92	保险带	SAFETY STRAP	1
93	十字槽盘头自攻螺钉ST4.8*13	SCREW ST4.8*13	1
94	空滤器上盖	COVER-AIR FILTER	1
95	锁母垫片	WASHER-AIR FILTER KNOB	1
96	空滤器锁母	KNOB-AIR FILTER	1
97	十字槽盘头组合螺钉M5*45	SCREW M5*45	2
98	空滤器下壳	AIR FILTER	1
99	化油器	CARBURETOR	1
100	化油器海绵	SPONG-CARBURETOR	1
101	保持圈	RETAIN RING	1
102	油门推杆	ROD THROTTLE	1
103	风门拉杆	CHOKE KNOB	1
104	风门拉杆座	GROMMET-CHOKE KNOB	1
105	化油器进油管	HOSE PILSE-CARBURETOR	1
106	化油器出油管	HOSE OIL CARBURETOR	1
107	扳机控制臂	LEVER-SAFETY TRIGGER	1
108	后手柄盖	COVER-REAR HANDLE	1
109	熄火开关	SWITCH STOP	1
110	后手柄	REAR HANDLE	1
111	手柄垫块	WASHER-REAR HANDLE	1
112	扳机	TRIGGER	1
113	扳机扭簧	SPRING-TRIGGER	1
114	空心开槽圆柱销 $\phi 5$	HOLLOW STRAIGH PIN $\phi 5$	1
115	前挡板	LEVERAGE	1
116	刹车扭簧	SPRING-ACTUATION	1
117	弹簧座	SUPPORT SPRING	1
118	重锤	LEVERAGE-BRAKE	1
119	重锤扭簧	SPRING-LEVERAGE	1
120	六角锁紧螺母M5	NUT M5	1
121	张紧销	TOOTH-CHAINADJUSTING	1
122	主动齿轮	SCREW CHAIN ADJUSTING	1
123	被动齿轮	SCREW CHAIN ADJUSTING	1
124	张紧器盖板	COVER-CHAINADJUSTING	1

125	弹簧盖板	COVER-CHAIN BRAKE	1
126	刹车带	BAND BRAKE	1
127	圆柱销3*8	STRAIGH PIN 3*8	3
128	刹车弹簧	SPRING-ACTUATION	1
129	刹车控制杆	BRAKE CONTROL POLE	1
130	右侧盖	BRAKE HOUSING ASSY	1
131	组合螺钉M5*15	SCREW M5*15	1
132	重锤套管	PIN-LEVERAGE	1
133	前挡板销套	PIN LEVERAGE	1
134	十字槽盘头螺钉M5*30	SCREW M5*30	1
135	主杠杆	PUSHER-SPRING (BRAKE)	1
136	前挡板压簧	COMPRESS SPRING-LEVERAGE	1
137	导板	GUIDE BAR	1
138	锉刀	FILE	1
139	T4内六角	HEXAGON RING SPANNER T3	1
140	T3内六角	HEXAGON RING SPANNER T4	1
141	套筒扳手	PLUG WRENCH	1
142	小一字起	SCREWDRIVER	1
143	链条	CHAIN	1
144	导板套	GUIDE BAR COVER	1
145	平垫	FLAT GASKET	1