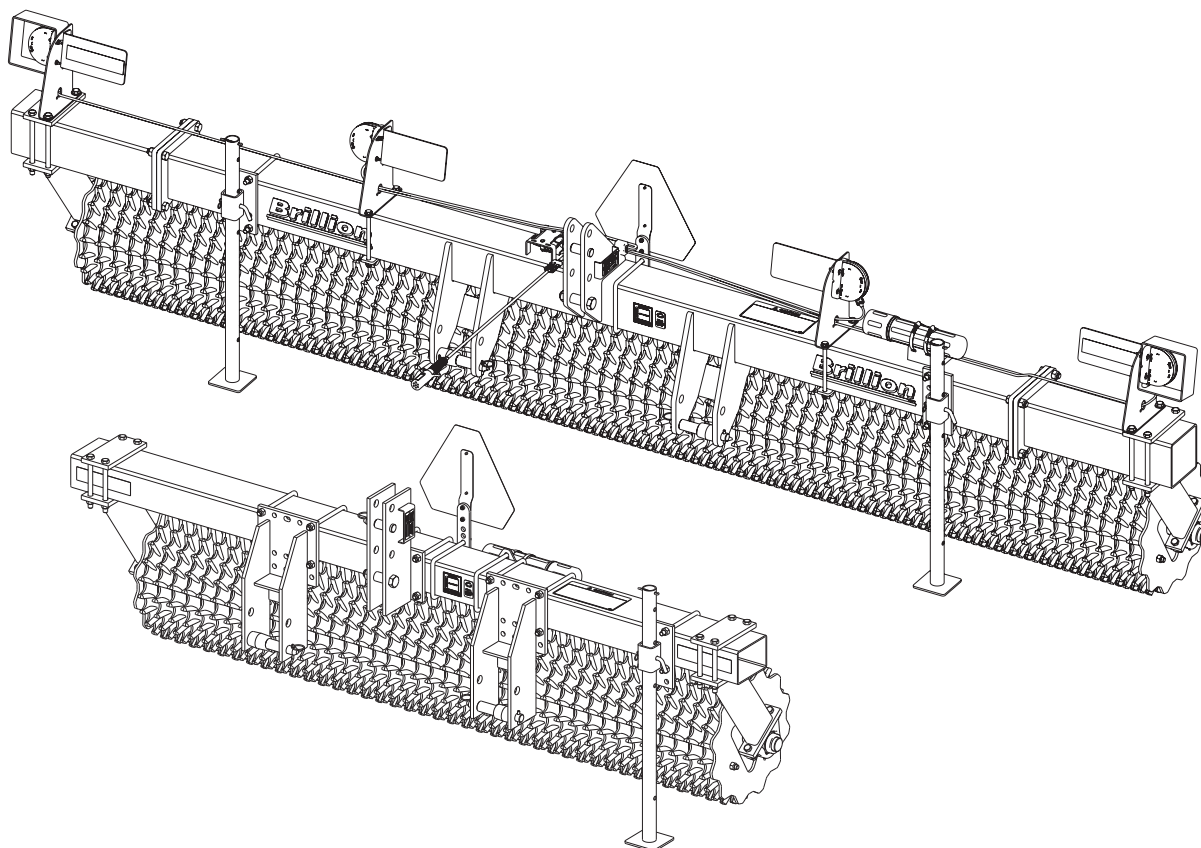




Floating Ring Pulverizer Models PPF6-18 Operator's and Parts Manual



LANDOLL COMPANY, LLC

1900 North Street

Marysville, Kansas 66508

(785) 562-5381

800-428-5655 ~ WWW.LANDOLL.COM

Manuals for PPF Floating Ring Pulverizer

Manual Number	Manual Type
6K107	Operator's and Parts Manual



DANGER

DO NOT operate or perform any maintenance tasks on this equipment until you have completed the following:

- 1. Receive proper training to operate this equipment safely.**
- 2. Read and understand the operator's manual.**
- 3. Be thoroughly trained on inspection and repair procedures.**

Failure to comply with this warning may result in serious injury or possibly death.

Table of Contents

1 Introduction and Safety Information

Introduction	1-1
Description of Unit	1-1
Using this Manual	1-1
Owner Assistance	1-1
Warranty Registration	1-1
Safety	1-2
Understanding Safety Statements	1-2
Transporting Safety	1-2
Safety Instructions for Towing Vehicles	1-3
Attaching, Detaching and Storage	1-3
Maintenance Safety	1-3
Protective Equipment	1-3
Prepare for Emergencies	1-3
Chemical Safety	1-3

2 Assembly

3-PT Hitch	2-2
Warning Lamp Installation	2-4

3 Operation

Tractor Preparation	3-2
Pulverizer Preparation	3-2
Tractor Preparation for Attaching Pulverizer	3-2
Attaching Pulverizer	3-2
Detaching Pulverizer	3-2
General Operation	3-5
Floating Ring Operation	3-5
Roller Orientation	3-5
Transport	3-6

4 Maintenance

General Torque Specifications	4-1
Fasteners	4-2
Lubrication Maintenance	4-2
Replacing or Adding Roller Wheels	4-2
Warning Lamps	4-4
Storage	4-4

5 Specifications

6 Instructions for Ordering Parts

7 Illustrated Parts List

 Frame, PPF6-8 7-1

 Frame, PPF10-18 7-3

 Roller to Frame Assembly 7-5

 Roller Assembly 7-7

 Warning Lamps 7-8

 Decals 7-9

 Decal Locations 7-11

8 Glossary

9 Index

Introduction and Safety Information

Introduction

The implement described in this manual has been designed with care and built by skilled workers using quality materials and processes. Proper assembly and maintenance, and safe operation will allow this machine to provide you with satisfactory use for seasons to come.



DANGER

Read this entire manual before attempting to assemble, adjust or operate this implement. Failure to comply with this warning can result in personal injury or death, damage to the implement or its components and inferior operation.

Description of Unit

The Brillion Floating Ring Pulverizer Series was designed to firm and level the soil into a plantable medium. The ability of the Pulverizer rings to move on the drum provides a self-cleaning feature that lends itself to efficient operation even in moist conditions. The floating rings follow the rugged soil contours found after using a primary tillage machine.

Using this Manual

This manual will familiarize you with safety, assembly, operation, adjustment, and maintenance. Read this manual and follow the recommendations to help ensure safe and efficient operation.

- The information in this manual is current at time of printing. Some parts may have changed to assure top performance.
- Location reference: Right and Left designations in this manual are determined by facing the direction the implement will travel during field operation, unless otherwise stated.

Owner Assistance

If customer service or repairs are needed, contact your Brillion dealer. Implement parts should only be replaced with Brillion parts. Have the Serial Number and complete Model Number available when ordering parts from your Brillion dealer. If items covered in this manual are not understood, contact your local Brillion Dealer.

Warranty Registration

To be eligible for Warranty, registration must be on file at Landoll Company, LLC. It is the responsibility of the dealer to register the machine within 10 days of purchase or lease on the Dealer Portal. Check with the dealer to verify the machine has been registered.

NOTE: IMPROPER ASSEMBLY, MODIFICATION, OR MAINTENANCE OF YOUR LANDOLL MACHINE CAN VOID YOUR WARRANTY.

Enter your product information below for quick reference. Refer to the Data Plate as shown. **See Figure 1-1.**

MODEL NUMBER

SERIAL NUMBER

DATE OF PURCHASE



Figure 1-1: Data Plate

INTRODUCTION AND SAFETY INFORMATION

Safety

NOTE

Investigation has shown that nearly 1/3 of all farm accidents are caused by careless use of machinery. Insist that all people working with you or for you abide by all safety instructions.

Understanding Safety Statements

You will find various types of safety information on the following pages and on the machine signs (decals) attached to the vehicle. This section explains their meaning.

NOTICE
Special Notices that include helpful maintenance hints. Read and thoroughly understand.

 DANGER
Danger means a life-threatening situation exists. Death can occur if safety measures or instructions on this label are not properly followed.

 WARNING
Warning means serious injury or death can occur if safety measures or instructions on this label are not properly followed.


 CAUTION
Caution means serious equipment or other property damage can occur if instructions on this label are not properly followed.

NOTE

You should read and understand the information contained in this manual and on the implement decals before you attempt to operate or maintain this equipment.

- Examine safety decals and be sure you have the correct safety decals for the implement. **See “Decals” on Page 7-9.**
- Order replacement decals through your Brillion dealer.
- Keep these signs clean so they can be observed readily. It is important to keep these decals cleaned more frequently than the implement. Wash with soap and water or a cleaning solution as required.

- Replace decals that become damaged or lost. Also, be sure that any new implement components installed during repair include decals which are assigned to them by the manufacturer.
- When applying decals to the implement, be sure to clean the surface to remove any dirt or residue. Where possible, sign placement should protect the sign from abrasion, damage, or obstruction from mud, dirt, oil etc.

 DANGER
<ul style="list-style-type: none"> • Do not allow anyone to ride on the tractor or implement. Riders could be struck by foreign objects or thrown from the implement. • Never allow children to operate equipment. • Keep bystanders away from implement during operation.

Transporting Safety

IMPORTANT

It is the responsibility of the owner/operator to comply with all state and local laws.

- When transporting the machine on a road or highway, use adequate warning symbols, reflectors, lights and slow moving vehicle sign as required. Slow moving tractors and towed machines can create a hazard when driven on public roads. They are difficult to see, especially at night.
- Do not tow a machine that, when fully loaded, weighs more than 1.5 times the weight of the towing vehicle.
- Carry reflectors or flags to mark the tractor and machine in case of breakdown on the road.
- Do not transport at speeds over 20 MPH under good conditions. Never travel at a speed which does not allow adequate control of steering and stopping. Reduce speed if towed load is not equipped with brakes.
- Avoid sudden stops or turns because the weight of the machine may cause the operator to lose control of the tractor.
- Use caution when towing behind articulated steering tractors; fast or sharp turns may cause the machine to shift sideways.
- Keep clear of overhead power lines and other obstructions when transporting. Know the transport height and width of your machine. **See “Specifications” on Page 5-1.**

Safety Instructions for Towing Vehicles

The maximum travel speed is the lesser of

- The limit of the road conditions;
- The maximum specified ground speed;
 - for towing operations as indicated in this manual or SIS;
 - of the towed vehicle as indicated in its operator's manual, SIS, or information sign;
- The maximum ground speed of the towed equipment combination shall be limited to the lowest specified ground speed of any of the towed machines. This speed is the ground speed limitation.

EXAMPLE: If the tractor is capable of 25 mph, the first implement has a SIS for 19 mph, and the last implement's operator's manual states its specified ground speed is 15 mph, the towed equipment combination ground speed limitation is 15 mph.

Attaching, Detaching and Storage

- Do not stand between the tractor and machine when attaching or detaching machine unless both are blocked from moving.
- Lower machine to ground when not in use.
- Block Roller so it will not roll when unhitched from the tractor.

Maintenance Safety

- Block the machine so it will not roll when working on or under it.
- Do not make adjustments or lubricate machine while it is in motion.
- Make sure all moving parts have stopped and all system pressure is relieved.
- Understand the procedure before doing the work. Use the proper tools and equipment.

Protective Equipment

- Wear protective clothing and equipment appropriate for the job. Avoid loose fitting clothing.
- Because prolonged exposure to loud noise can cause hearing impairment or hearing loss, wear suitable hearing protection, such as earmuffs or ear-plugs.

Prepare for Emergencies

- Keep a First Aid Kit and Fire Extinguisher handy.
- Keep emergency numbers for doctor, ambulance, hospital and fire department near the phone.

Chemical Safety

Agricultural chemicals can be dangerous. Improper use can seriously injure persons, animals, plants, soil and property.

- Read chemical manufacturer's instructions and store or dispose of unused chemicals as specified. Handle chemicals with care and avoid inhaling smoke from any type of chemical fire.
- Store or dispose of unused chemicals as specified by the chemical manufacturer.

Assembly



CAUTION

Do not work on or under this machine unless securely blocked and supported by a hoist or tractor or by other sufficient means.



WARNING

Do not attempt to lift heavy parts (such as the frame, rockshaft, and pull hitch) manually. Use a hoist or a fork lift to move these parts into position.

NOTE

Refer to the repair Parts Manual Chapter for identification of parts and for approximate relationship of the parts in assembly. Your exact Pulverizer Model may vary slightly from the illustration.

To ensure alignment of assemblies, leave the nuts loose until completion of final assembly. Use lock washers or flat washer as specified. Spread all cotter pins.

After completion of final assembly, tighten all nuts evenly to prevent misalignment, distortion or binding. Tighten all screws and nuts to the recommended torques.

IMPORTANT

- If pre-assembled parts or fasteners are temporarily removed, remember where they go. It is best to keep parts separated.
- Check that all working parts move freely, bolts are tight and cotter pins spread.
- Refer to the Torque Table for proper torque valves. Note the different torque requirements for bolts with locknuts.

"Left" and "Right" refer to directions seen as if standing behind the machine and facing in the direction of forward travel.

IMPORTANT

All Harnesses must be firmly attached to machine frame members so they do not sag or become torn loose by field debris. Use the tie wraps provided.

Check to be sure the Harnesses are slack enough so as to not be stretched or interfered with while raising and lowering of the machine.

ASSEMBLY

3-PT Hitch

The PPF Floating Ring Pulverizer is shipped assembled except for the Stand(s), SMV, Hitch Pins and Bushings, Warning Lamps, and Decals

1. Support the Pulverizer assembly with a hoist or by similar means capable of supporting its weight without tipping.
2. Assemble Stand Bracket(s) on the front of the Frame Tube with 5/8-11 U-Bolt and Locknuts. Install Stand(s) into the Stand Bracket(s) with Bent Pin and Hairpin Cotter. To prevent Stand from falling through the Stand Bracket, install Cotter Pin in the top hole of the Stand. **See Figures 2-1 and 2-2.**

3. Install SMV Mount 4" to 6" left of center on the back of the Frame Tube with 5/8-11 U-Bolt and Locknut. Assemble SMV Sign to Mount with 5/16-18 x 1 Bolts, Flat Washers, and Locknuts.
4. Assemble 1.315 x 2-1/8 Spacer between the Upper Hitch bottom holes with 1-8 x 4-1/2 Bolt and Locknut.
5. Install Hitch Pins and Bushings. Lower Hitch, install 1-1/8 x 9 Pin Assembly, 1-7/16 x 2-7/8 Bushing and 2 x 2-13/16 Spacer. Secure with Klik Pin. Upper Hitch, install 1 x 4-1/2 Clevis Pin and 1-1/4 x 1-15/16 Bushing. Secure with Klik Pin.
6. Apply decals. **See "Decals" on page 7-9.**

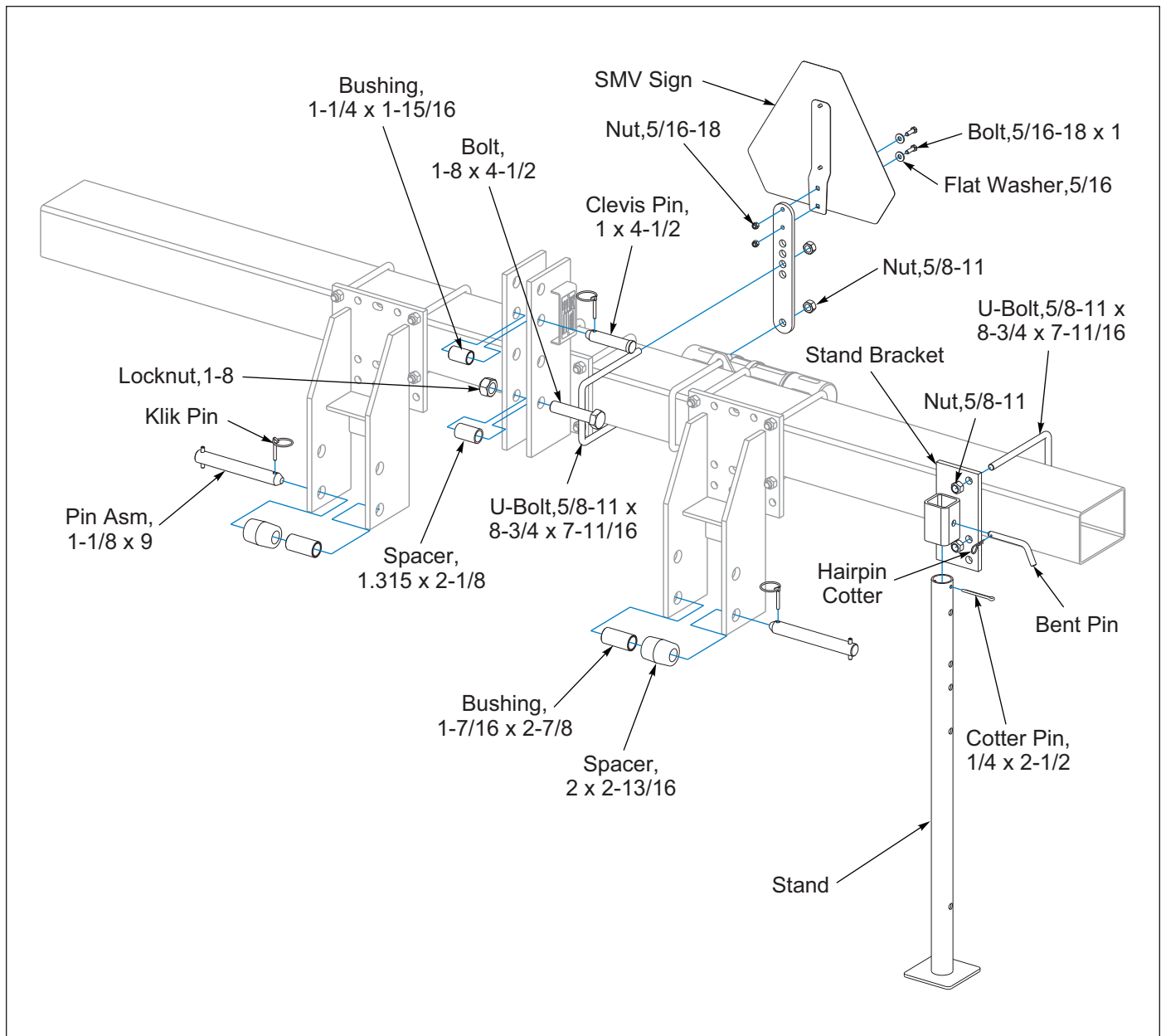


Figure 2-1: PPF6-8 Frame

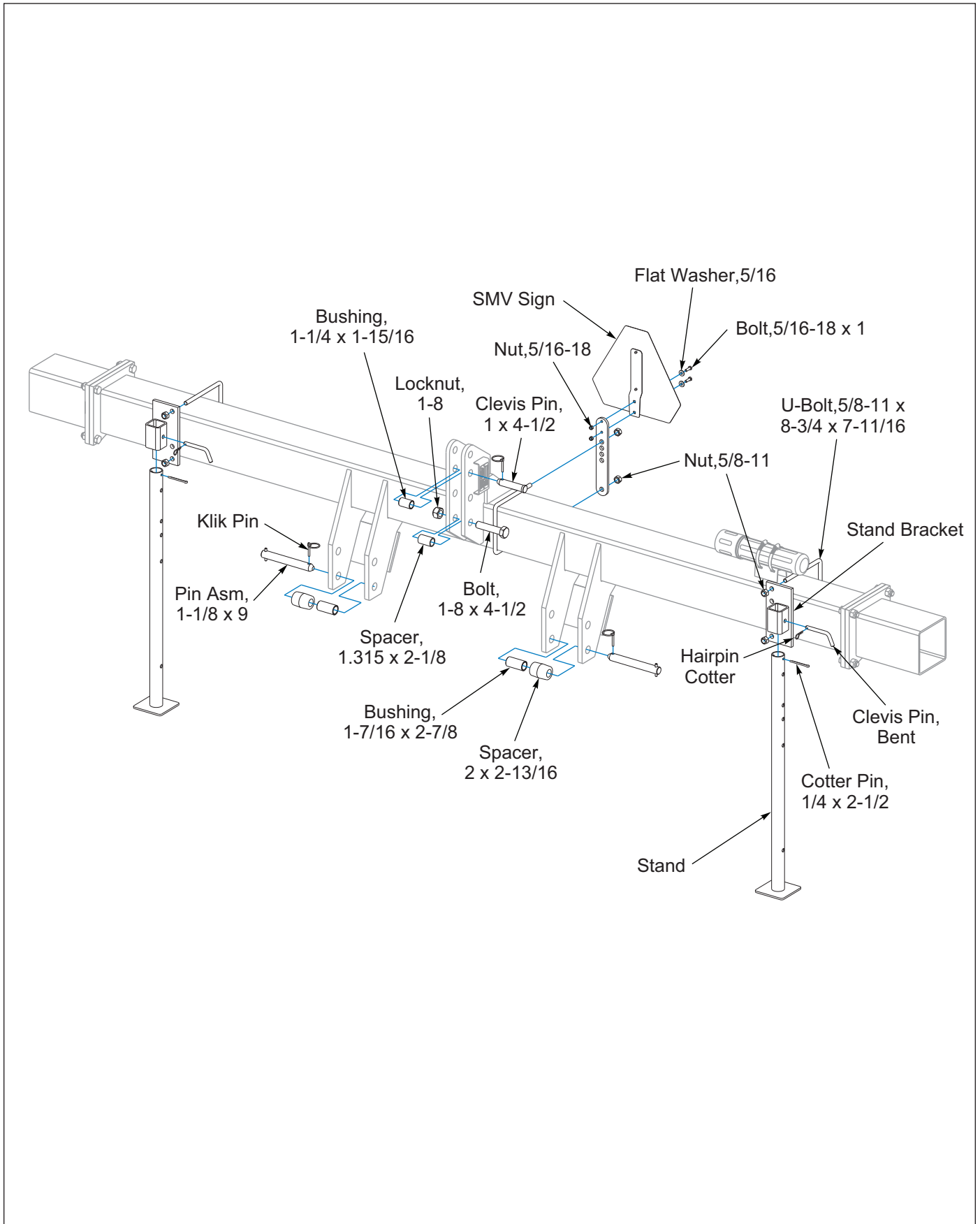


Figure 2-2: PPF10-18 Frame

Warning Lamp Installation

PPF10-18 Models Only

1. Remove each Bearing Support, two inner 5/8-11 x 9-1/2 Bolts and Locknuts. Set the outer Light Mount Bracket on top of the 4-Hole Plate. Add Flat Washer under bolt head and re-install. **See Figure 2-4.**
2. Attach the inner Light Mount Brackets to the frame approximately 42 inches from centerline, placing the strap under the frame and secure with 1/2-13 x 8-1/2 Bolts, Flat Washers, and Flange Locknuts.
3. Install the Amber Lamp inside the Tube Light Shield, attach to the outer Light Bracket with 1/4-20 x 1-3/4 Bolts. Attach Decal Plate with Locknuts. Use Flat Washers and Locknuts to attach the Lamp to Light Mount Bracket.
4. Install the Red Lamp to the inside Light Mount Bracket with 1/4-20 x 1-1/2 Bolts. Attach Decal Plate with Locknuts. Use Flat Washers and Locknuts to attach the Lamp to Light Mount Bracket.
5. Attach the Flasher Control Module to the Module Bracket located near the center of the frame with 1/4-20 x 1-1/2 Bolts and Locknuts.

IMPORTANT

Cords are marked Yellow Tape for Left and Green Tape for Right.

6. Lay out the Lamp Harness, noting that the connectors marked with Green Tape is Right Side and Yellow Tape is Left Side.
7. Connect the Lamp Harness to the Flasher Control Module, route both cords with Green Tape along the top of rear frame. Route the connectors up through the Light Bracket. Connect the 3-Prong Connector to the Red Lamp and connect the 2-Prong Connector to the Amber Lamp.
8. Repeat for the Left Side (Yellow Tape).
9. Connect the 7-Pin Harness to the Flasher Control Module.
10. Adjust the Lamp Angles so Lamps are vertical with the machine, when raised in the transport position. **See Figure 2-3.**
11. Tighten all hardware.
12. Bundle and secure any excess cord with Tie Wraps.
13. Attach the SMV Mount to the center of the frame with 5/8-11 U-Bolt and Flanged Locknuts. Attach SMV Sign to SMV Mount with 5/16-18 x 1 Bolts, Flat Washers, and Locknuts.

14. Apply the reflector decals to the Decal Plates. The Amber Reflector Decals should be front facing on the outer Decal Plate. The Red Reflector Decals and Orange Decals should be rear facing on both the inner and outer Decal Plates.

IMPORTANT

All Harnesses must be firmly attached to machine frame members so they do not sag or become torn loose by field debris. Use the tie wraps provided.

Check to be sure the Harnesses at the center of the machine are slack enough so as to not be stretched or interfered with when machine is raised or lowered.

NOTE

The 7-Pin Harness connects to the tractor socket when in use. Allow enough harness length to reach tractor socket. Bundle and secure any excess cord with Tie Wraps.

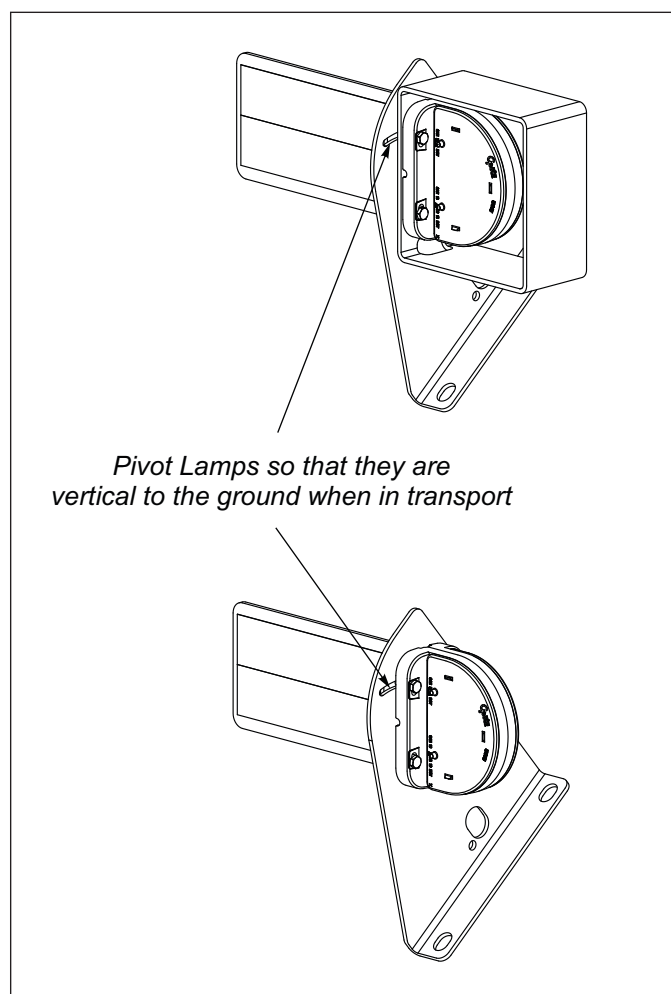


Figure 2-3: Lamp Bracket Adjustment

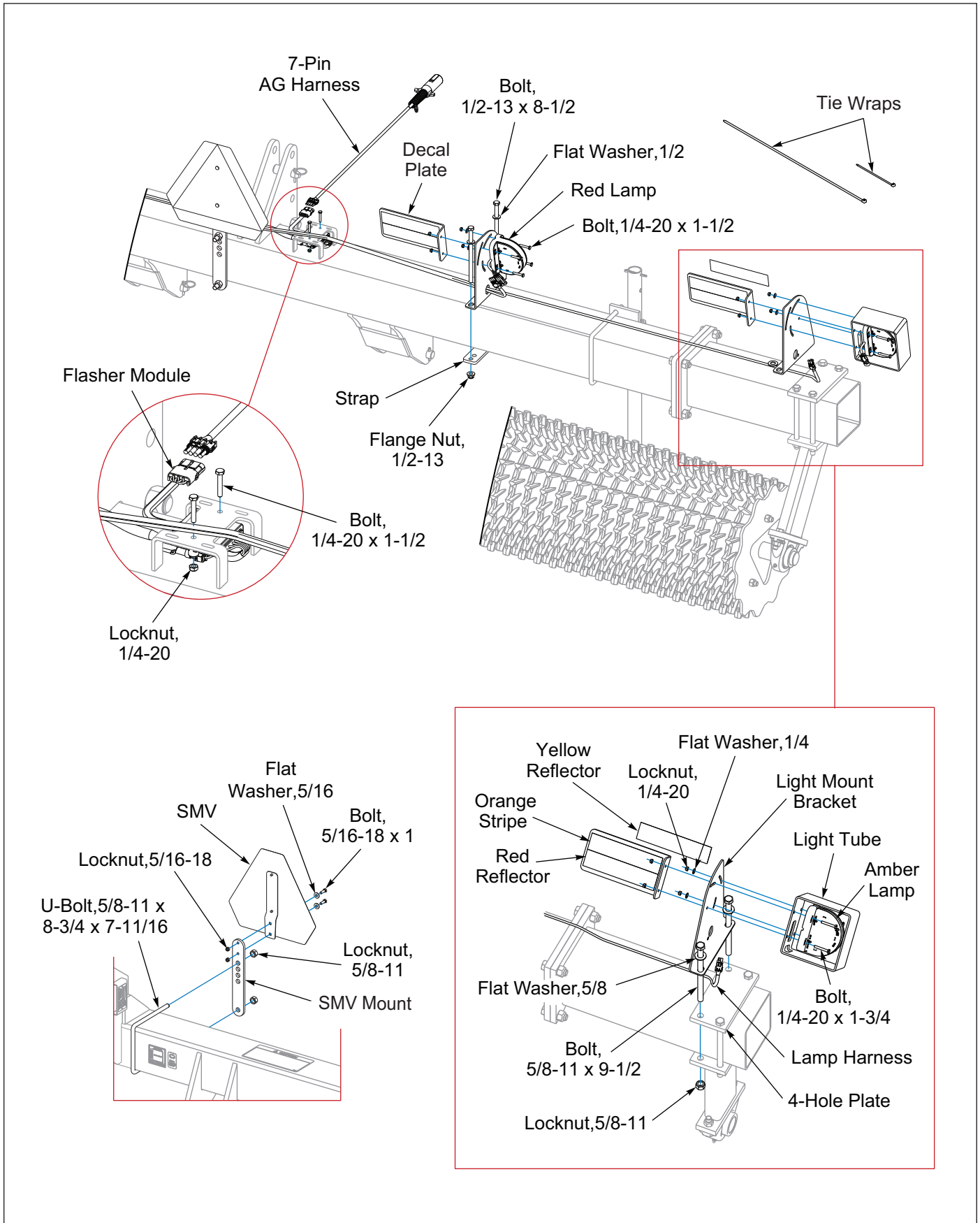


Figure 2-4: Warning Lamp Installation (PPF10-18)

Operation

 **DANGER**


Never allow anyone a ride on the Pulverizer at any time. Allowing a person to ride on the machine can inflict serious personal injury or death to that person.

 **WARNING**

All 3-PT Hitch mounted equipment must be lowered to the ground, when servicing or when equipment is idle. Failure to take preventative measures against accidental lowering can result in serious personal injury.

 **WARNING**

Always be sure that tractor hitch capacity is rated to carry the weight of the Pulverizer. Refer to “Specifications” and Tractor Operator’s Manual.

 **CAUTION**

When transporting farm implements on public roads, it is the responsibility of the operator to abide by state and local laws concerning wide loads, speed, safety emblems and safety lighting equipment. Drive at safe speeds, particularly when rounding corners, crossing rough ground or driving on hillsides, to prevent tipping the tractor.

 **CAUTION**

Block implement and use Stand(s) so the machine will not roll when unhitched from tractor.

Tractor Preparation

The Brillion Pulverizer is designed to be used with a 3-PT Hitch Category 2 or 3 Free Link or a Category 2, 3, 3N Quick Coupler. **See Figures 3-1 and 3-2.**

Before attaching the implement, prepare the tractor as follows:

1. Inflate the rear tractor tires equally and add ballast according to the Tractor Operator's Manual.
2. Lock the Tractor Drawbar in the center position.

Pulverizer Preparation

1. Prior to operating the Pulverizer, inspect it thoroughly for good operating condition.
2. Replace worn or missing parts.
3. When the machine is new, check the bolt tightness after a few hours of operation. Tighten any loose nuts or bolts.

Tractor Preparation for Attaching Pulverizer

1. The Pulverizer is designed to be pulled by a Tractor equipped with a 3-PT Hitch Category 2, 3 Free Link or Category 2, 3, 3N Quick Coupler. **See Figure 3-1.** Be sure Tractor's Hitch Capacity is not exceeded by the Laden Mass of the Pulverizer. **Refer to Tractor Operator's Manual.**
2. Be sure Tractor is properly ballasted. A minimum 25% of Tractor and Equipment Laden Mass must be on Tractor Front Wheels in transport position to maintain stability. **See "Specifications" on page 5-1. Refer to Tractor Operator's Manual.**
3. Check the Tractor tire inflation levels to ensure that they are properly inflated for the additional Laden Pulverizer Mass. **Refer to the Tractor Operator's Manual.** Be sure not to over ballast and exceed Tractor Tire Capacity.
4. Set Tractor 3-PT Lower Links to allow lateral (torsional) float. **Refer to Tractor Operator's Manual.** If left rigid, your Brillion Pulverizer may not follow ground contours.
5. Set Lift Rod length long enough to ensure Pulverizer can float downward in the case of a furrow or waterway. Lower Links should be the same height, leveling your Brillion Pulverizer side to side. Fine adjustments may need to be made after hookup is completed. **Refer to the Tractor Operator's Manual.**

6. Attach Pulverizer to the Tractor's 3-PT Free Link or Quick Coupler using the appropriate size pins and bushings. Be sure to use the correct hardware and that it is in good working order. **Refer to the Tractor Operator's Manual** for Quick Hitch Operation.
7. Connect 7-Pin Connector (if equipped) to Tractor Outlet, routing cable by avoiding pinch points.
 - Make sure the tractor has a good clean receptacle, free of dirt and corrosion.
 - Make sure the 7-Pin Connector is inserted ALL the way in. With tighter fitting pins, operator may think the Connector is all the way in, but really isn't.
 - Make sure the tractor receptacle cover latches over the keyway on the 7-Pin Connector to hold the Connector in place.
 - If an operator plugs in the 7-Pin Connector, but the lights do not seem to work right, check the above items to make sure there is a good connection with the 7-Pin Connector.
8. Raise the Pulverizer. Adjust or lock tractor sway stabilizers if equipped, centering the Pulverizer with the Tractor. **Refer to the Tractor Operator's Manual.**
9. Lower the Pulverizer, if necessary level the Pulverizer side to side (laterally) by adjusting Lift Rod length. **Refer to the Tractor Operator's Manual.**

Attaching Pulverizer

1. Attach the Pulverizer to the Tractor with the appropriate size pins and bushings based on the 3-PT Hitch Category being used. **See Figure 3-1.**
2. Raise the Stand(s) to the highest position before setting the machine in motion.
3. Connect the Electrical (if equipped).
4. Raise Pulverizer.

Detaching Pulverizer

1. Lower the Pulverizer on a firm, level surface.
2. Block the Roller Wheels.
3. Lower the Stand(s).
4. Disconnect Electrical (if equipped) and unhitch tractor from Pulverizer.

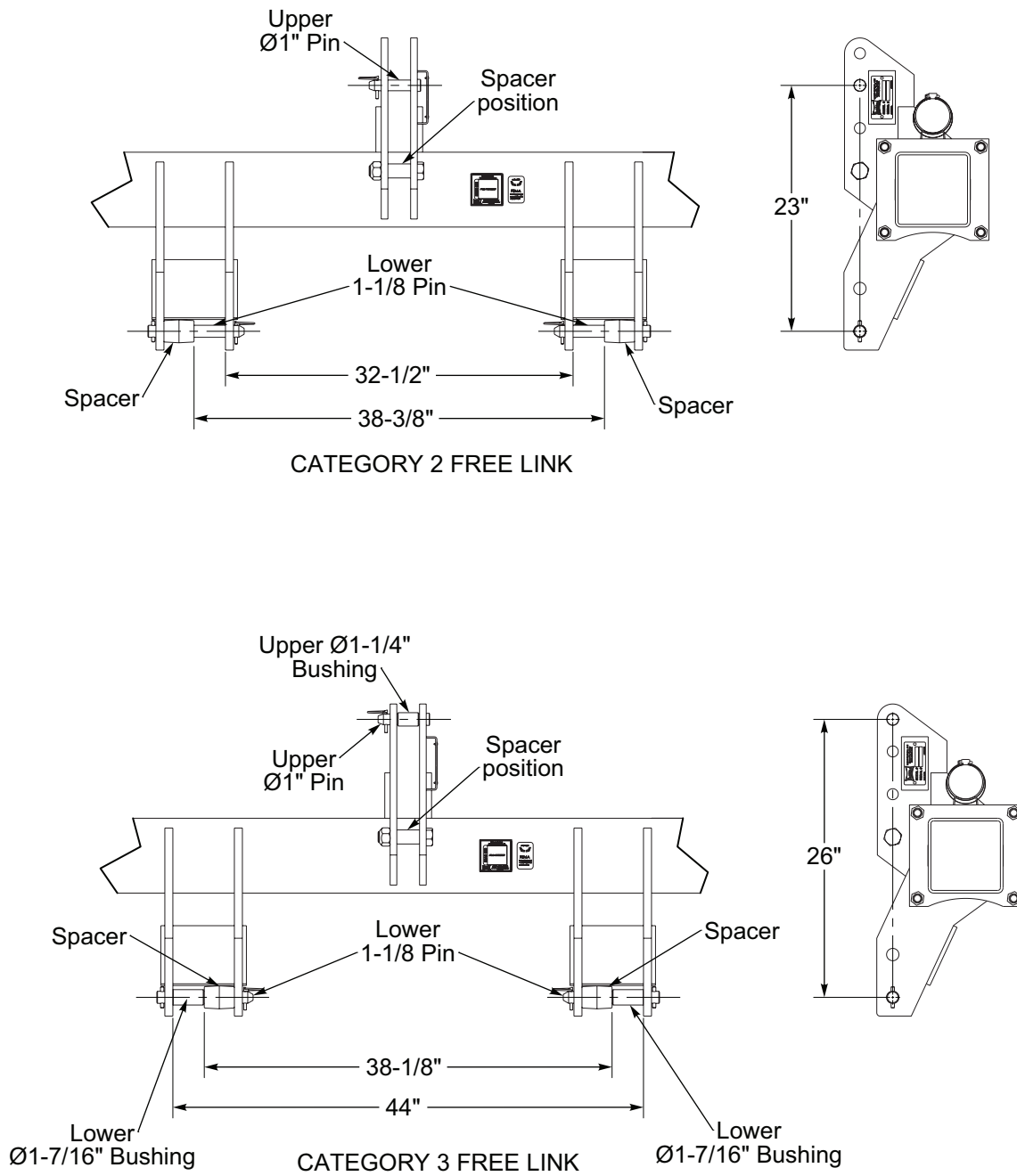


Figure 3-1: Category 2 and 3 Free Link

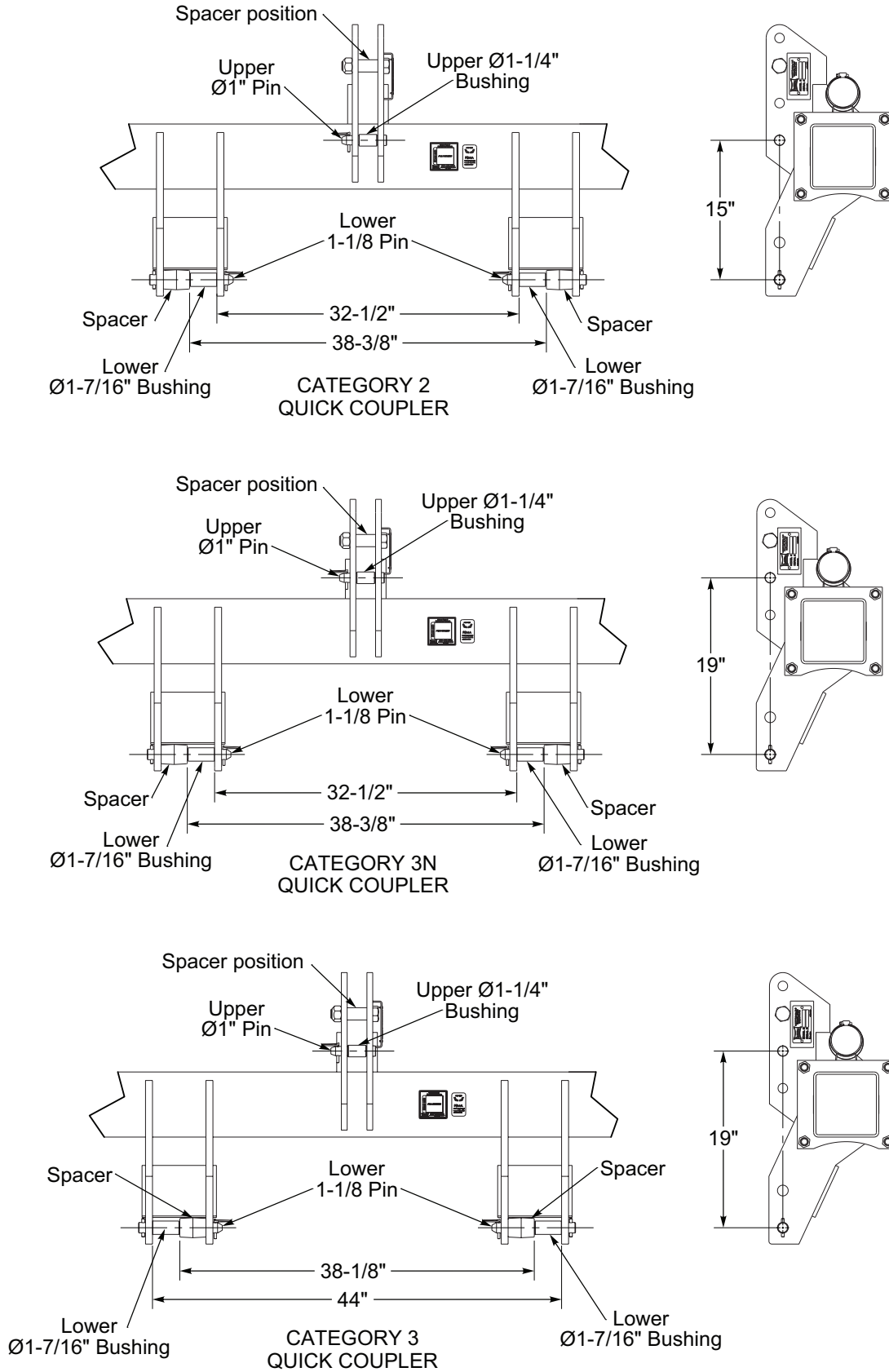


Figure 3-2: Category 2, 3 and 3N Quick Coupler

General Operation

1. The minimum horsepower requirement is based on the Pulverizer width. This will vary widely due to speed, moisture, and types of soils. Local dealers can help in making recommendations for your area.
6FT to 8FT Machines: 50 horsepower
10FT to 14FT Machines: 75 horsepower
16FT to 18FT Machines: 90 horsepower
2. 3-PT Hitch capacity is based on the Pulverizer weight. See "**Specifications**" on page 5-1. Tractor must be sized accordingly. Refer to **Tractor Operator's Manual**.
3. Operating speed is typically 3-6 mph. Reduce speed in rocky conditions to prevent wheel breakage.
4. During field operation, the Pulverizer should be raised for turns.
5. Pulverizer Stand(s) should always be raised when operating.
6. When not in use, lower Pulverizer to a level surface. Block the Pulverizer Roller and lower Stand(s) before unhitching from tractor.

Floating Ring Operation

The Floating Ring Pulverizer Roller Assembly is designed with rings whose inside diameter is greater than the drum which supports them. This allows the roller wheels to follow the irregular contours of the soil surface. See **Figure 3-1**.

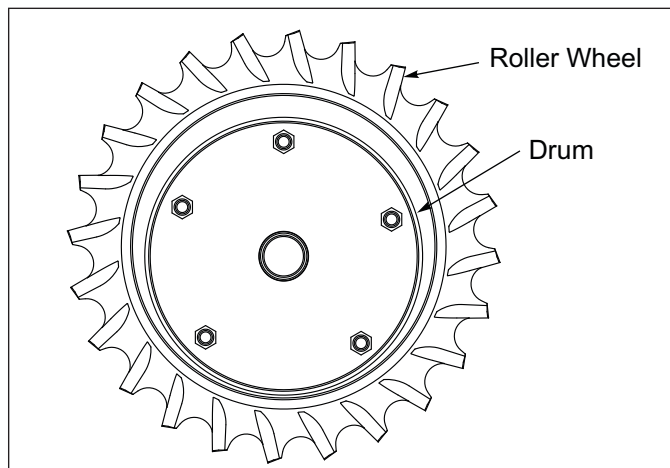


Figure 3-1: Floating Rings Concept

Roller Orientation

The Roller Assembly can be assembled in the frame two ways.

- When the Roller Assembly is installed as shown in **Figure 3-2**, the Roller Wheels will have a tendency to pack the soil. See **Figure 3-2**.

- When the Roller Assembly is installed in reverse as shown in **Figure 3-3**, the Roller Wheels will act more like a rotary hoe and will have a tendency to loosen the soil.

Reorient the Roller Assembly as follows:

1. Lower the Roller Assembly to the ground.
2. Support the frame with an overhead hoist.
3. Remove the 5/8-11 x 2-1/2 Bolts and Locknuts which hold the Pillow Block Bearings to the Bearing Hangers.
4. Raise the frame above the Roller Assembly.
5. Pivot the Roller Assembly 180 degrees.
6. Re-attach the Pillow Block Bearings to the frame with 5/8-11 x 2-1/2 Bolts and Locknuts.

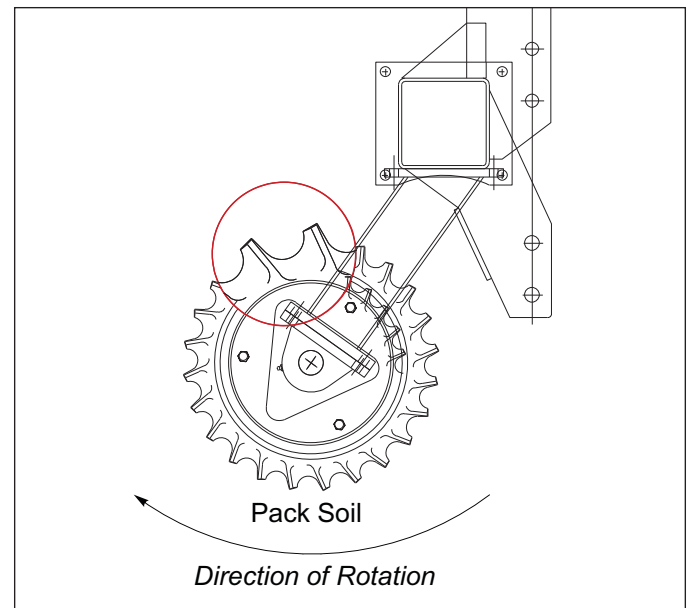


Figure 3-2: Roller Asm Orientation: Pack the Soil

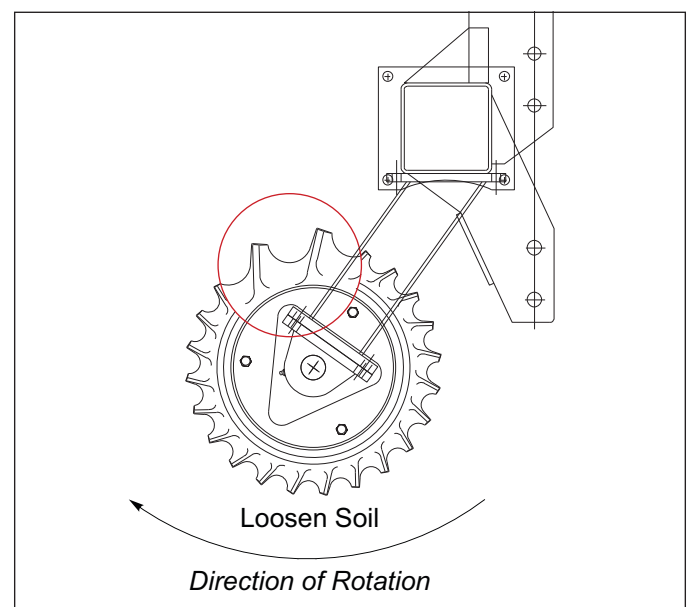


Figure 3-3: Roller Asm Orientation: Loosen the Soil

OPERATION

Transport

1. Check and follow all federal, state, and local requirements before transporting the Pulverizer.
2. The Pulverizer should be transported only by tractor required for field operation. The implement weight should not exceed more than 1.5 times the tractor weight. Maximum transport speed for the Pulverizer is 20 mph.



CAUTION

Excessive speed may result in loss in control of the tractor and machine, reduced braking ability, or failure of the machine tire or structure. Do not exceed the machines maximum specified ground speed regardless of the capability of maximum tractor speed.

3. Slow down when driving on rough roads. Reduce speed when turning, or on curves and slopes to avoid tipping. Equipment altered other than the place of manufacture may reduce the maximum transport speed. Additional weight, added tanks, harrowing attachments, etc. may reduce machine load carrying capabilities.
4. Know the height and width of the implement being towed. Markers, tanks, attachments, etc. can increase the height and width of the implement.



DANGER

Stay away from power lines when transporting, extending implement. Electrocutation can occur without direct contact.

5. Connect the Safety Warning Lights 7-Pin Plug (if equipped) into tractor 7-Pin outlet, routing cord by avoiding pinch points.
6. Check to see the tractor hitch capacity is rated to carry the weight of the Pulverizer. **Refer to Tractor Manual.**
7. Use pins and bushings that properly fit the tractor lift arms or Quick Coupler.
8. Raise the machine to full transport height.
9. Check tractor tires for proper inflation, and that wheel bolts or lug nuts are properly torqued.
10. Verify that all warnings lights, SMV sign, reflectors, and safety decals are clearly visible and functioning properly.
11. Transport during daylight hours whenever possible. Always use flashing warning lights, except where such use is prohibited by law. Make sure lights, reflectors and SMV emblem are clearly visible and operating. Remove any obstructions such as dirt, mud, stalks or residue that restricts view before transporting. **See Figure 3-4.**

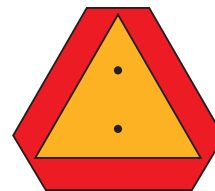


Figure 3-4: SMV Sign

Maintenance

General Torque Specifications

LANDOLL
FASTENER TORQUE SPECIFICATIONS
 (Rev. 23/04)

This chart provides general torque specifications for Standard Nuts and Caps Screws (as received condition) that are not called out on processes or drawings.

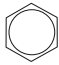


This **DOES NOT** apply if special lubrication such as graphite moly-disulfide or other extreme pressure lubricants are used.

Add 33% to the listed torque specification if the fastener is dry (solvent cleaned).

Cap screw grades are indicated by markings on the head, these vary among manufacturers.

Thick Nuts must be used on grade 8 cap screws.




SAE TORQUE SPECIFICATIONS (FOOT-POUNDS)
 [] Indicates specifications for Prevailing Torque Nuts.

UNC Size	 Grade 2	 Grade 5	 Grade 8
1/4 - 20	4 [5]	6 [7]	9 [11]
5/16 - 18	8 [10]	13 [16]	18 [22]
3/8 - 16	15 [19]	23 [29]	35 [43]
7/16 - 14	24 [30]	35 [43]	55 [62]
1/2 - 13	35 [43]	55 [62]	80 [100]
9/16 - 12	55 [62]	80 [100]	110 [137]
5/8 - 11	75 [94]	110 [137]	170 [212]
3/4 - 10	130 [162]	200 [250]	280 [350]
7/8 - 9	125 [156]	320 [400]	460 [575]
1 - 8	190 [237]	408 [506]	680 [850]
1-1/8 - 7	270 [337]	600 [750]	960 [1200]
1-1/4 - 7	380 [475]	840 [1050]	1426 [1782]
1-3/8 - 6	490 [612]	1100 [1375]	1780 [2225]
1-1/2 - 6	650 [812]	1460 [1825]	2360 [2950]

See back side for SAE UNF and Metric torques.

Form No. F-257-0322

SAE TORQUE SPECIFICATIONS (FOOT POUNDS)
 [] Indicates specifications for Prevailing Torque Nuts.

UNF Size	 Grade 2	 Grade 5	 Grade 8
1/4 - 28	5 [6]	7 [9]	10 [12]
5/16 - 24	9 [11]	14 [17]	20 [25]
3/8 - 24	17 [21]	25 [31]	35 [44]
7/16 - 20	27 [34]	40 [50]	60 [75]
1/2 - 20	40 [50]	65 [81]	90 [122]
9/16 - 18	60 [75]	90 [112]	130 [162]
5/8 - 18	85 [106]	130 [162]	180 [225]
3/4 - 16	150 [188]	220 [275]	320 [400]
7/8 - 14	140 [175]	360 [450]	500 [625]
1 - 14	210 [263]	540 [675]	760 [950]
1-1/8 - 12	300 [375]	660 [825]	1080 [1350]
1-1/4 - 12	420 [525]	920 [1150]	1500 [1875]
1-3/8 - 12	560 [700]	1260 [1575]	2010 [2512]
1-1/2 - 12	730 [912]	1640 [2050]	2660 [3325]

METRIC TORQUE SPECIFICATIONS
 This chart provides torque specification for phosphate coated, Rockwell "C" 38-45 Metric Coarse Thread Class 10.9 Fasteners, Class 10.0 Nuts and Harden Flat Washers.

[] Indicates specifications for Prevailing Torque Nuts.

MM Size	Newton - Meters	Foot-Pounds
6	10 [14]	7 [10]
7	16 [22]	12 [16]
8	23 [32]	17 [24]
10	46 [60]	34 [47]
12	80 [101]	60 [75]
14	125 [155]	90 [115]
16	200 [240]	150 [180]
18	275 [330]	205 [245]
20	385 [450]	290 [335]
24	670 [775]	500 [625]
27	980 [1105]	730 [825]
30	1330 [1470]	990 [1090]
33	1790 [1950]	1730 [1870]
36	2325 [2515]	1730 [1870]
39	3010 [3210]	2240 [2380]

See front side for SAE UNC and notes.

Figure 4-1: General Torque Specifications

CAUTION

Do not work on or under this machine unless securely blocked and supported by a hoist or tractor or by other sufficient means.

WARNING

Do not attempt to lift heavy parts (such as the frame, rockshaft, and pull hitch) manually. Use a hoist or a fork lift to move these parts into position.

Fasteners

Before operating your Brillion machine, check all hardware for tightness. Use the Tightening Torque Table as a guide. **See Page 4-1.**

After a few hours of use, check entire machine and tighten any loose nuts or bolts. Daily or periodic checks should be made thereafter.

When replacing bolts, be sure to use fasteners of equal grade.

Lubrication Maintenance

Lubricate with quality grease per recommended lubrication frequency intervals indicated or if machine is not used for an extended period. Greaseable components are the same on each side. **See Figure 4-2.**

- Grease Pillow Block Bearings on the ends of the Roller every 12 hours.

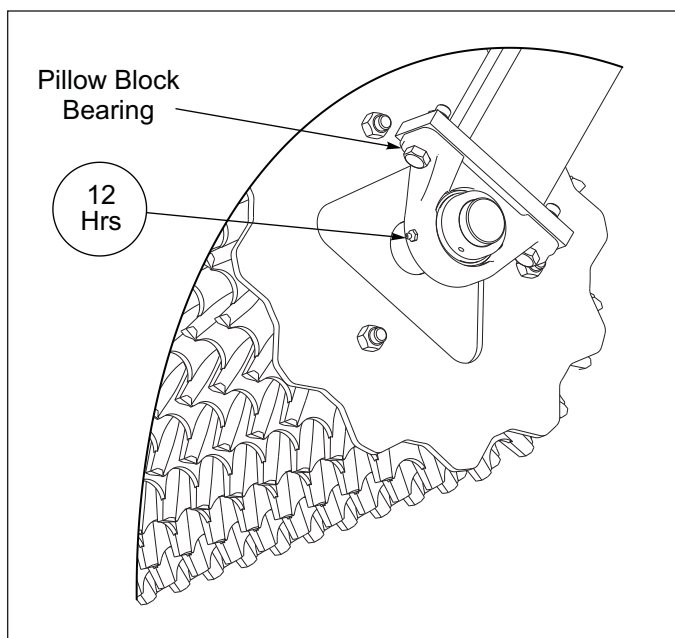


Figure 4-2: Lubrication Intervals

Replacing or Adding Roller Wheels

1. Attach tractor to the Pulverizer. Raise the Pulverizer to the transport position. With the pulverizer in the transport position, slide all the wheels toward one end of the drum. Lower the machine so that the roller wheels rest on blocks approximately two inches off the ground. **See Figure 4-3.** Continue to lower the machine until the outside of the roller drum contacts the bottom ring of the roller wheels.
2. Remove the Bearing Support with the Pillow Block Bearing attached from the end of the Drum that will be serviced. Loosen the set screws that tighten the Eccentric Locking Collar to the shaft. Unlock Eccentric Locking Collar. Remove the Locknuts from the 5/8-11 x 9-1/2 Bolts (PPF10-18) or 5/8-11 x 7-1/2 Bolts (PPF6-8) which mount the Bearing Supports to the Frame and slide the bearing and the support off the shaft. **See Figure 4-4.**
3. Remove the Retainer Plate by removing the 5/8-11 Locknuts that attach the Retainer Plate to the drum.
4. Remove damaged wheels, if applicable. Slide the replacement/additional wheels onto the drum, ensuring that the orientation is the same direction as the others. Reinstall the Retainer Plate with 5/8-11 Locknuts. Tighten.
5. Slide the Pillow Block Bearing and Bearing Support onto the Drum Shaft until the bearing bottoms against shaft shoulder. Reattach the Bearing Support to the Frame with 5/8-11 x 9-1/2 Bolts (PPF10-18) or 5/8-11 x 7-1/2 Bolts (PPF6-8) and Locknuts. Tighten.
6. Lock the Bearing Eccentric Locking Collar and tighten the set screw against the shaft.
7. Raise the Pulverizer to the transport position.

IMPORTANT

- If pre-assembled parts or fasteners are temporarily removed, remember where they go. It is best to keep the parts separated.
- Check that all working parts move freely, bolts are tight and cotter pins are spread.

Refer to “**General Torque Specifications**” on Page 4-1 for proper bolt torque values. Note the different torque requirement for bolts with locknuts.

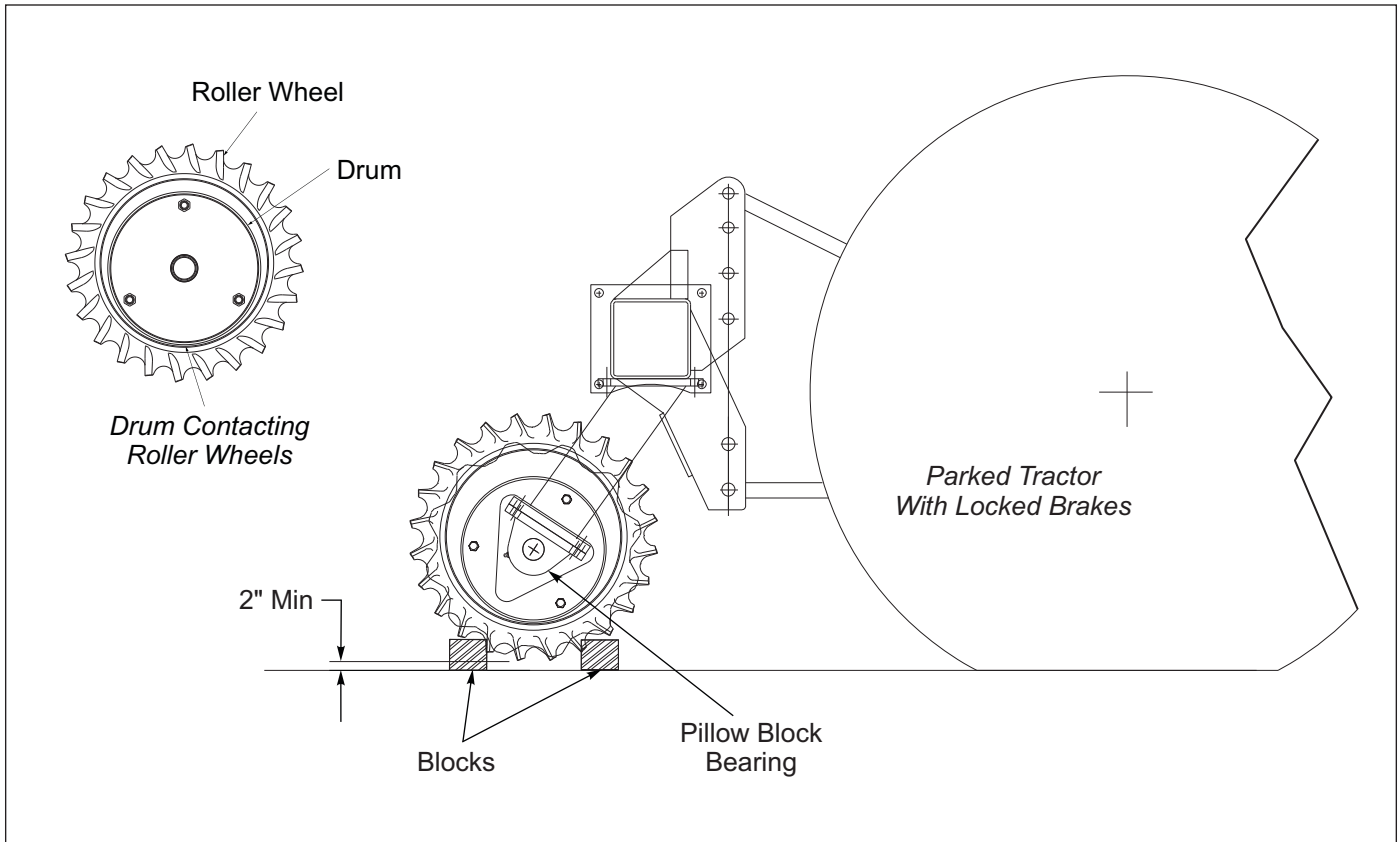


Figure 4-3: Replacing or Adding Roller Wheels - Detail

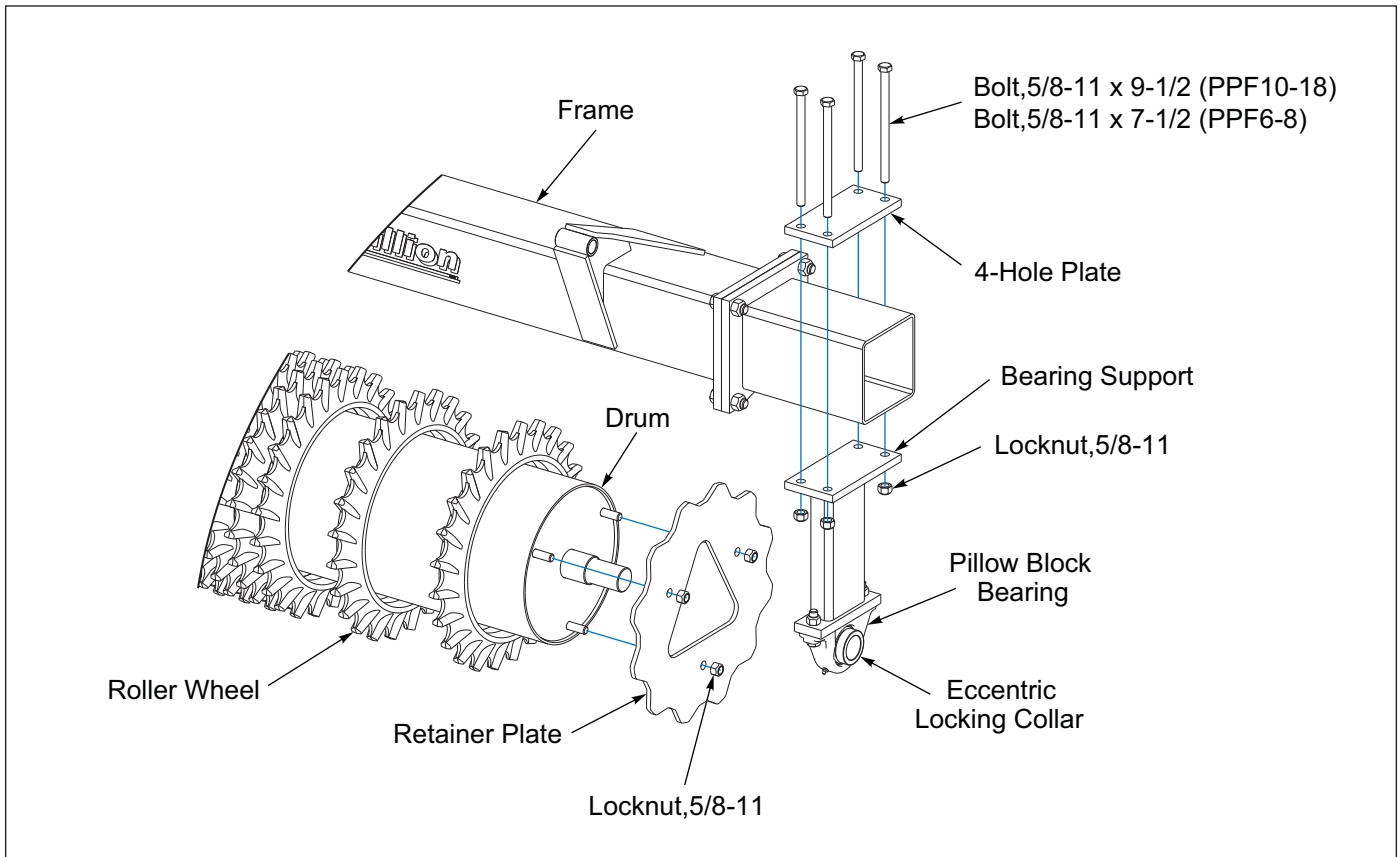


Figure 4-4: Replacing or Adding Roller Wheels

Warning Lamps

PPF10-18 Models Only

When connecting the 7-Pin Warning Lamp Connector:

1. Make sure the Tractor has a good clean Receptacle, free of dirt and corrosion.
2. Make sure the 7-Pin Connector is inserted ALL the way in. With tighter fitting pins, operator may think the Connector is all the way in, but it really isn't.
3. Make sure the Tractor Receptacle Cover latches over the keyway on the 7-Pin Connector to hold the Connector in place.

If an operator connects the 7-Pin Connector, but the lights Do Not seem to work right, check the above items to make sure there is a good connection with the 7-Pin Connector.

Storage

1. The service life of the Pulverizer will be extended by proper off-season storage practices. Prior to storing the unit, complete the following procedures:
 - Completely clean the unit.
 - Inspect the machine for worn or defective parts. Replace as needed.
 - Repaint all areas where the original paint is worn off.
 - Lubricate each point of the machine as stated in **“Lubrication Maintenance” on Page 4-2.**
2. Store the unit in a shed or under a tarpaulin to protect it from the weather.
3. Lower the Pulverizer on a level surface.
4. Lower Stand(s).
5. Choke or block Roller Wheels before unhitching from Tractor.

Specifications

Product Attributes	PPF6B12	PPF8B12	PPF10B12	PPF12B12	PPF14B12
Approximate Weight	1,601 lbs. (720 kg)	2,020 lbs. (909 kg)	2,580 lbs. (1,161 kg)	3,056 lbs. (1,375 kg)	3,490 lbs. (1,571 kg)
Working Width	6 ft. 0 in. (1.8 m)	8 ft. 0 in. (2.4 m)	10 ft. 0 in. (3 m)	12 ft. 0 in. (3.6 m)	14 ft. 0 in. (4.2 m)
Transport Width	7 ft. 4 in. (2.2 m)	9 ft. 4 in. (2.8 m)	11 ft. 4 in. (3.4 m)	13 ft. 4 in. (4.1 m)	15 ft. 4 in. (4.6 m)
Transport Height	Dependent Upon Tractor			Dependent Upon Tractor	
Overall Length, Transport	4 ft. 3 in. (1.27 m)			4 ft. 3 in. (1.27 m)	
Overall Length, Operation	4 ft. 3 in. (1.27 m)			4 ft. 3 in. (1.27 m)	
Main Frame Structure	7 in. x 7 in. (178 mm x 178 mm)			7 in. x 7 in. (178 mm x 178 mm)	
Pulverizer Wheels	20 in. (500 mm) Ductile Iron Rings			20 in. (500 mm) Ductile Iron Rings	
Number of Wheels	30	40	50	60	70
Axle Size	12 in. (305 mm)	12 in. (305 mm)	12 in. (305 mm)	12 in. (305 mm)	12 in. (305 mm)
Tire Size	N/A	N/A	N/A	N/A	N/A
Hitch	Cat. 2, 3 Free Link; Cat. 2, 3, 3N Quick Coupler			Cat. 2, 3 Free Link; Cat. 2, 3, 3N Quick Coupler	
Dual Wheel Kit	N/A	N/A	N/A	N/A	N/A
Single Wheel Kit	N/A	N/A	N/A	N/A	N/A
LED Safety Warning Lights & SMV Emblem	Standard	Standard	Standard	Standard	Standard
Safety Chain Kit	N/A	N/A	N/A	N/A	N/A
Powder Coat Paint, Red	Standard	Standard	Standard	Standard	Standard
Horsepower Requirements	50 HP (37.3 kW) and up		75 HP (56 kW)	75 HP (56 kW)	75 HP (56 kW)
Recommended Operating Speed	3 to 6 MPH (5 to 10 km/h)			3 to 6 MPH (5 to 10 km/h)	

Specifications subject to change with or without notice.

Figure 5-1: Model Specifications (1 of 2)

Product Attributes	PPF15B12	PPF16B12	PPF17B12	PPF18B12
Approximate Weight	3,729 lbs. (1,678 kg)	3,924 lbs. (1,765 kg)	4,350 lbs. (1,958 kg)	4,385 lbs. (1,973 kg)
Working Width	15 ft. 0 in. (4.5 m)	16 ft. 0 in. (4.8 m)	17 ft. 0 in. (5.1 m)	18 ft. 0 in. (5.4 m)
Transport Width	16 ft. 4 in. (4.9 m)	17 ft. 4 in. (5.2 m)	19 ft. 4 in. (5.8 m)	19 ft. 4 in. (5.8 m)
Transport Height	Dependent Upon Tractor		Dependent Upon Tractor	
Overall Length, Transport	4 ft. 3 in. (1.27 m)		4 ft. 3 in. (1.27 m)	
Overall Length, Operation	4 ft. 3 in. (1.27 m)		4 ft. 3 in. (1.27 m)	
Main Frame Structure	7 in. x 7 in. (178 mm x 178 mm)		7 in. x 7 in. (178 mm x 178 mm)	
Pulverizer Wheels	20 in. (500 mm) Ductile Iron Rings		20 in. (500 mm) Ductile Iron Rings	
Number of Wheels	75	80	85	90
Axle Size	12 in. (305 mm)	12 in. (305 mm)	12 in. (305 mm)	12 in. (305 mm)
Tire Size	N/A	N/A	N/A	N/A
Hitch	Cat. 2, 3 Free Link; Cat. 2, 3, 3N Quick Coupler		Cat. 2, 3 Free Link; Cat. 2, 3, 3N Quick Coupler	
Dual Wheel Kit	N/A	N/A	N/A	Optional
Single Wheel Kit	N/A	N/A	N/A	Optional
LED Safety Warning Lights & SMV Emblem	Standard	Standard	Standard	Standard
Safety Chain Kit	N/A	N/A	N/A	Standard
Powder Coat Paint, Red	Standard	Standard	Standard	Standard
Horsepower Requirements	90 HP (67.2 kW)	90 HP (67.2 kW)	90 HP (67.2 kW)	90 HP (67.2 kW)
Recommended Operating Speed	3 to 6 MPH (5 to 10 km/h)		3 to 6 MPH (5 to 10 km/h)	

Specifications subject to change with or without notice.

Figure 5-2: Model Specifications (2 of 2)

Instructions for Ordering Parts

**** Repair parts must be ordered through an Authorized Dealer ****

DEALER INSTRUCTIONS FOR ORDERING PARTS FROM LANDOLL PARTS DISTRIBUTION CENTER

Phone #: 800-423-4320 or 785-562-5381

Fax #: 888-527-3909

Order online: dealer.landoll.com

DATA PLATE

The Data Plate, which lists the model number and serial number, is located on the left side of the Floating Ring Pulverizer.

SERIAL NUMBER

The following information will help decode the trailer serial number.

PXD2400100 = xxmysssss

xx	= model series (i.e. "PX" for all Pulverizers)
m	= month of manufacture (ex. "D" means April. The letter I is not used)
yy	= last digits of the year manufactured (ex. "24" means 2024)
sssss	= Sequential number used to track warranty and service information.



Figure 6-1: Data Plate

Illustrated Parts List

Frame, PPF6-8

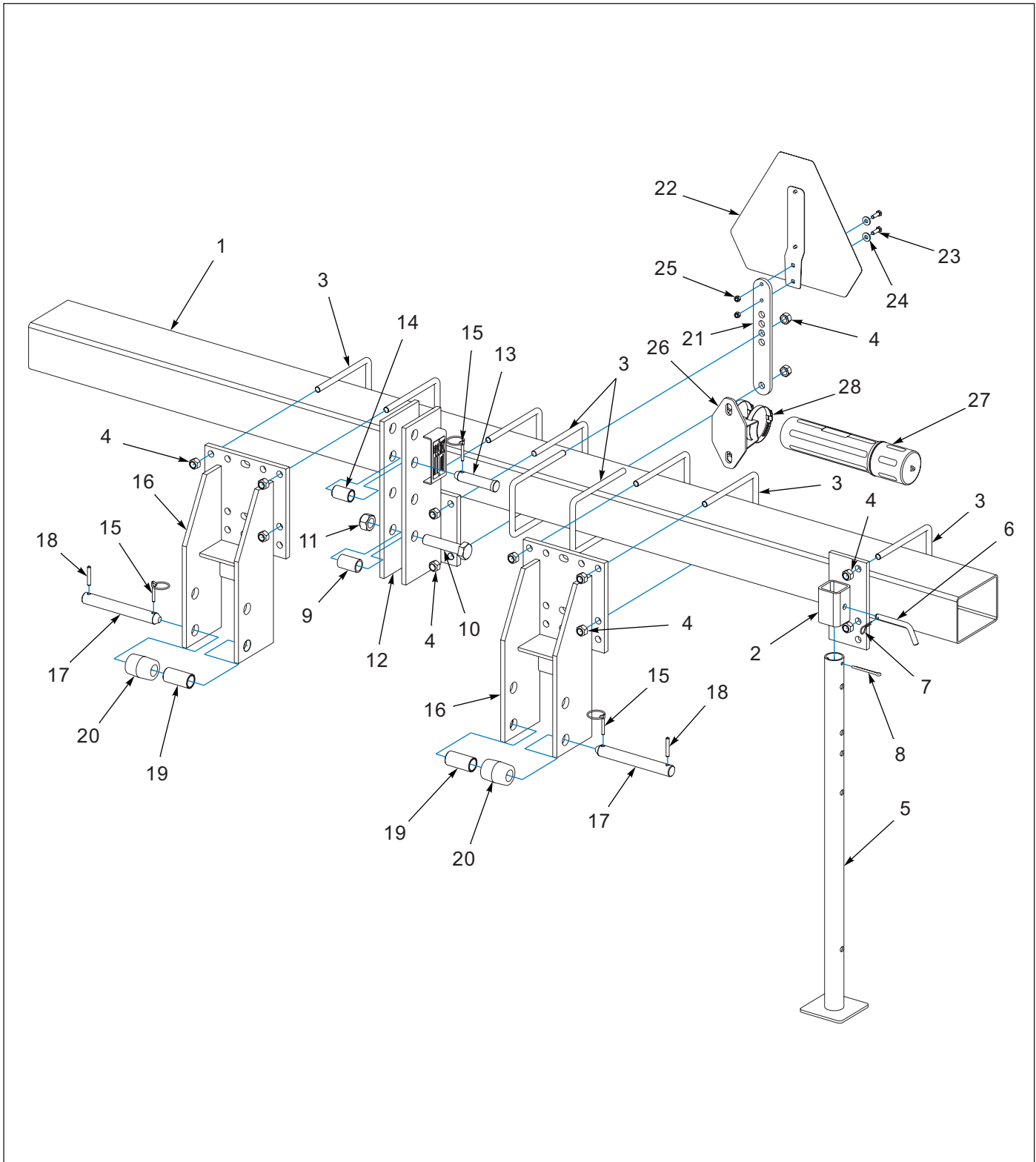


Figure 7-1: Frame, PPF6-8

Frame, PPF6-8

ITEM	PART NUMBER	DESCRIPTION	QTY.
1	5K812	TUBE (87-1/2") (PPF6)	1
1	5K811	TUBE (111-1/2") (PPF8)	1
2	7J375	BRACKET WLDMT STAND	2
3	1J801	U-BOLT 5 X 7	9
4	1-512-010005-13	NUT,HEX SLFLKG GRB 5/8-11	18
5	9D047	STAND WELDMENT	1
6	3C335	CLEVIS PIN, BENT	1
7	6C400	HAIR PIN COTTER	1
8	1-557-010362-65	PIN COTTER, 1/4X2-1/2 ZP	1
9	6D988	SPACER (1.315 X 2-1/8)	1
10	141777	SCREW HX CP 1-8UNCX4-1/2 GR5	1
11	1-512-010005-19	NUT 1-8 HEX SLF-LOCKING GRB	1
12	1K285	MAST WELDMENT	1
13	6D529	CLEVIS PIN 1.0 X 4.5	1
14	5D157	SLEEVE	1
15	1-557-010327	PIN LYNCH 1/4X1-1/4	3
16	1K247	HITCH BRACKET	2
17	8D427	PIN (1-1/8 X 9)	2
18	147072	PIN, SPRING SLOTTED 5/16 X 2	2
19	5D158	SLEEVE	2
20	8D425	SPACER (2 X 2-13/16)	2
21	164678	MOUNT, SMV	1
22	2P151	SMV W/BRACKET	1
23	1-654-010049-05	SCREW HX CP 5/16-18UNCX1 GR5	2
24	1-861-010032-09	WASHER, FLAT 5/16 W ZP/CD	2
25	104032	NUT,HX SLF-LKG W/MYL 5/16-18	2
26	8K645	CANISTER BRACKET WELDMENT	1
27	1-116-010019	BOX, MANUAL STORAGE	1
28	105-0093	HOSE CLAMP 4-1/2	2

Frame, PPF10-18

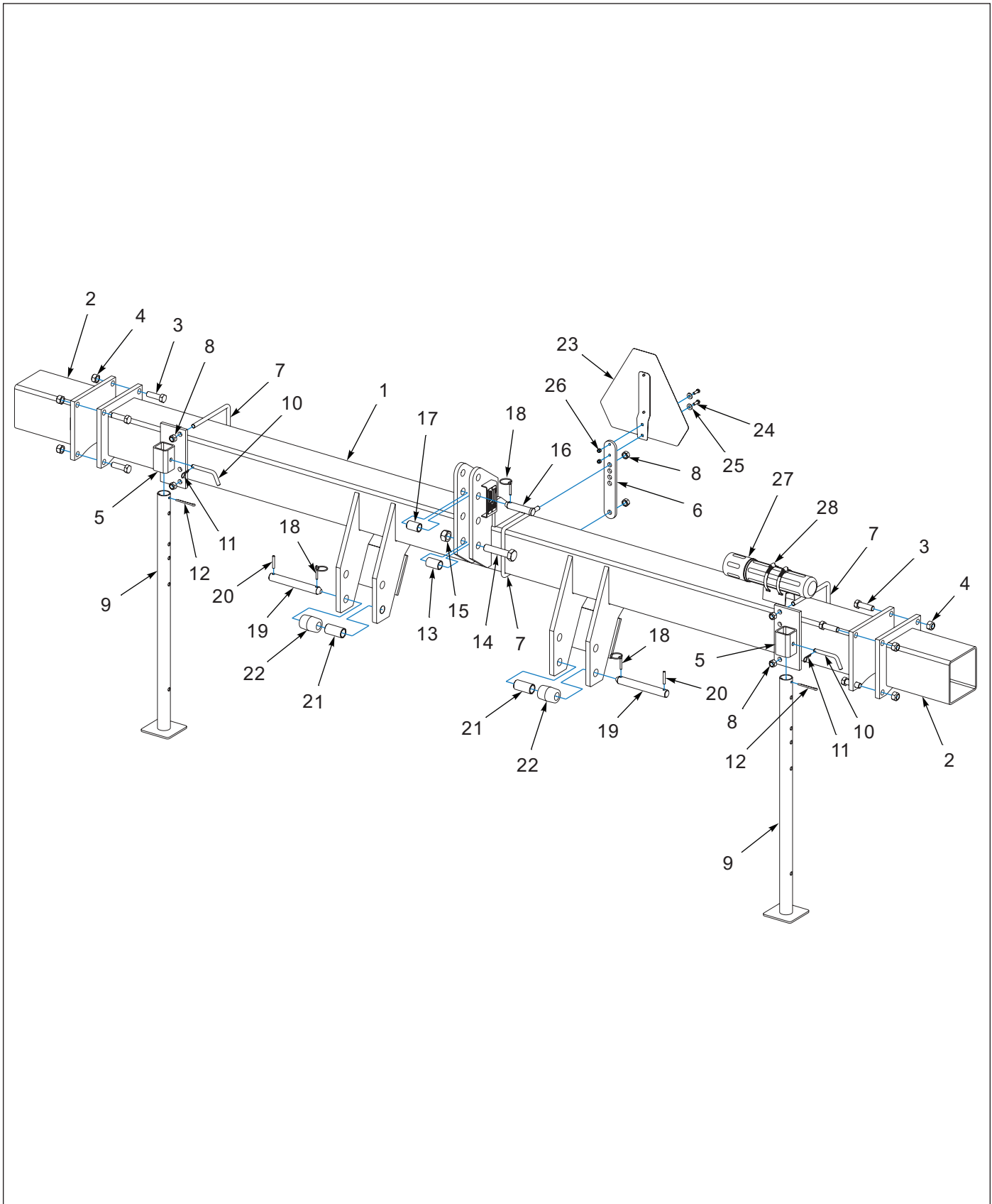


Figure 7-2: Frame, PPF10-18

Frame, PPF10-18

ITEM	PART NUMBER	DESCRIPTION	QTY.
1	5K766	FRAME WLDMT PPF PULVERIZER	1
2	4K989	EXTENSION, 1 FT WLDMT	1
2	4K990	EXTENSION, 2 FT WLDMT	1
2	4K991	EXTENSION, 3 FT WLDMT	1
2	6K309	EXTENSION 4' WLDMT	1
3	1-654-010061-07	SCREW,HX CP 3/4-10UNCX2-1/2G5	8
4	1-512-010005-15	NUT,HEX,SLFLKG GRB 3/4-10	8
5	7J375	BRACKET WLDMT STAND	2
6	164678	MOUNT, SMV	1
7	9D112	U-BOLT 5/8-11X8-3/4 X 7-11/16	3
8	1-512-010005-13	NUT,HEX SLFLKG GRB 5/8-11	6
9	9D047	STAND WELDMENT	2
10	3C335	CLEVIS PIN, BENT	2
11	6C400	HAIR PIN COTTER	2
12	1-557-010362-65	PIN COTTER, 1/4X2-1/2 ZP	1
13	6D988	SPACER (1.315 X 2-1/8)	1
14	141777	SCREW HX CP 1-8UNCX4-1/2 GR5	1
15	1-512-010005-19	NUT 1-8 HEX SLF-LOCKING GRB	1
16	6D529	CLEVIS PIN 1.0 X 4.5	1
17	5D157	SLEEVE	1
18	1-557-010327	PIN LYNCH 1/4X1-1/4	3
19	8D427	PIN (1-1/8 X 9)	2
20	147072	PIN, SPRING SLOTTED 5/16 X 2	2
21	5D158	SLEEVE	2
22	8D425	SPACER (2 X 2-13/16)	2
23	2P151	SMV W/BRACKET	1
24	1-654-010049-05	SCREW HX CP 5/16-18UNCX1 GR5	2
25	1-861-010032-09	WASHER, FLAT 5/16 W ZP/CD	2
26	104032	NUT,HX SLF-LKG W/MYL 5/16-18	2
27	1-116-010019	BOX, MANUAL STORAGE	1
28	105-0093	HOSE CLAMP 4-1/2	2

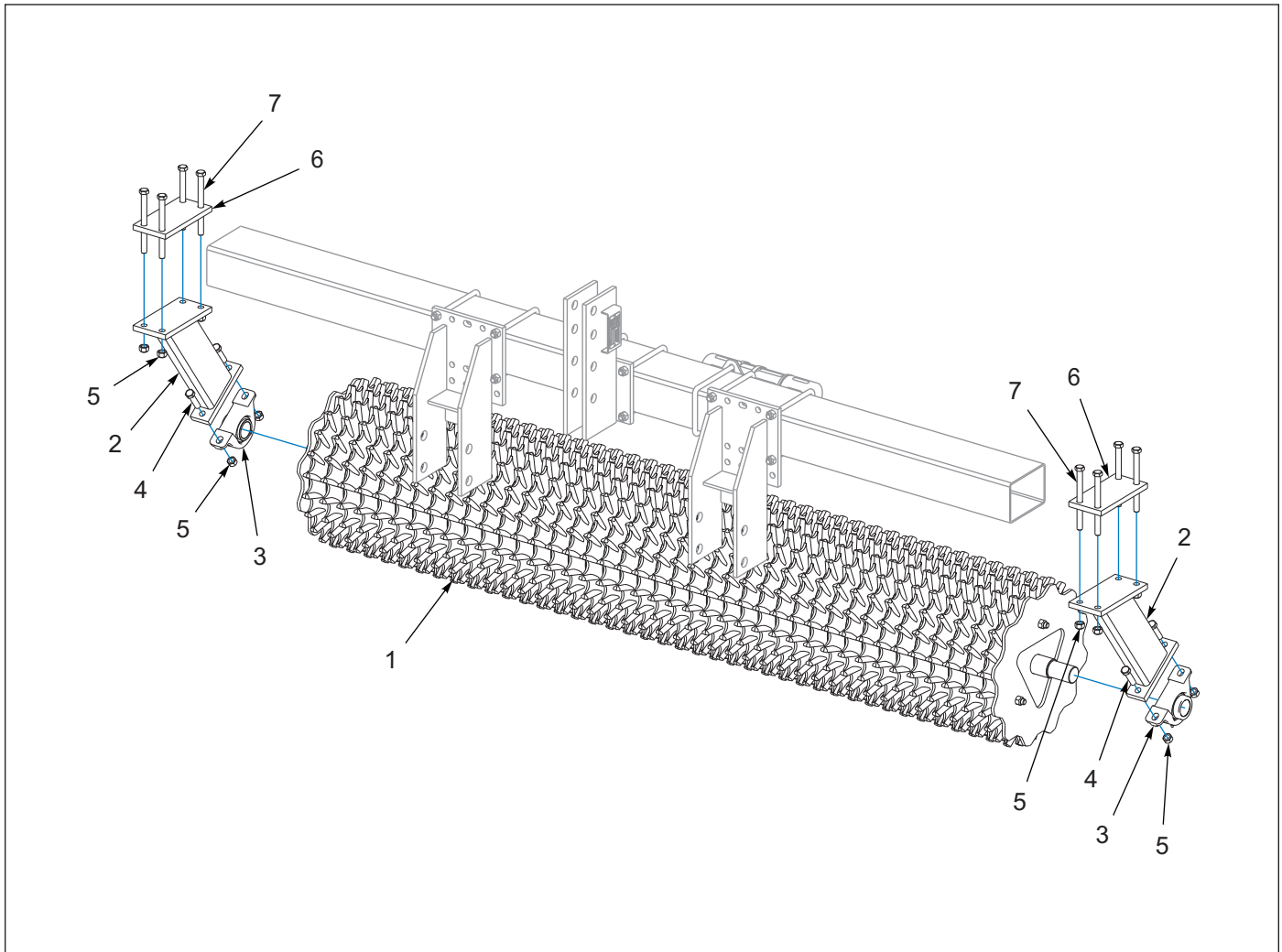


Figure 7-4: Roller to Frame Assembly, PPF6-8

Roller to Frame Assembly

ITEM	PART NUMBER	DESCRIPTION	QTY
1	5K810	ROLLER ASSY - PPF6B12 (SEE PAGE 7-7)	1
1	5K809	ROLLER ASSY - PPF8B12 (SEE PAGE 7-7)	1
1	5K066	ROLLER ASSY 10-20-12 (SEE PAGE 7-7)	1
1	5K067	ROLLER ASSY 12-20-12 (SEE PAGE 7-7)	1
1	5K068	ROLLER ASSY 14-20-12 (SEE PAGE 7-7)	1
1	5K069	ROLLER ASSY 15-20-12 (SEE PAGE 7-7)	1
1	5K070	ROLLER ASSY 16-20-12 (SEE PAGE 7-7)	1
1	1P828	ROLLER ASSEMBLY 12-20-17 (SEE PAGE 7-7)	1
1	6K310	ROLLER ASSEMBLY - 18-20-12 (SEE PAGE 7-7)	1
2	5K769	SUPPORT WLDMT BEARING	2
3	4K993	PILLOW BLOCK BEARING	2
4	1-654-010059-07	SCREW HX CP 5/8-11UNCX2-1/2G5	4
5	1-512-010005-13	NUT,HEX SLFLKG GRB 5/8-11	12
6	5K196	PLATE	2
7	1-654-010059-24	SCREW HX CP 5/8-11UNCX9-1/2 (PPF10-18)	8
7	123096	SCREW,HX CP 5/8-11UNCX7.50GR5 (PPF6-8)	8

Roller Assembly

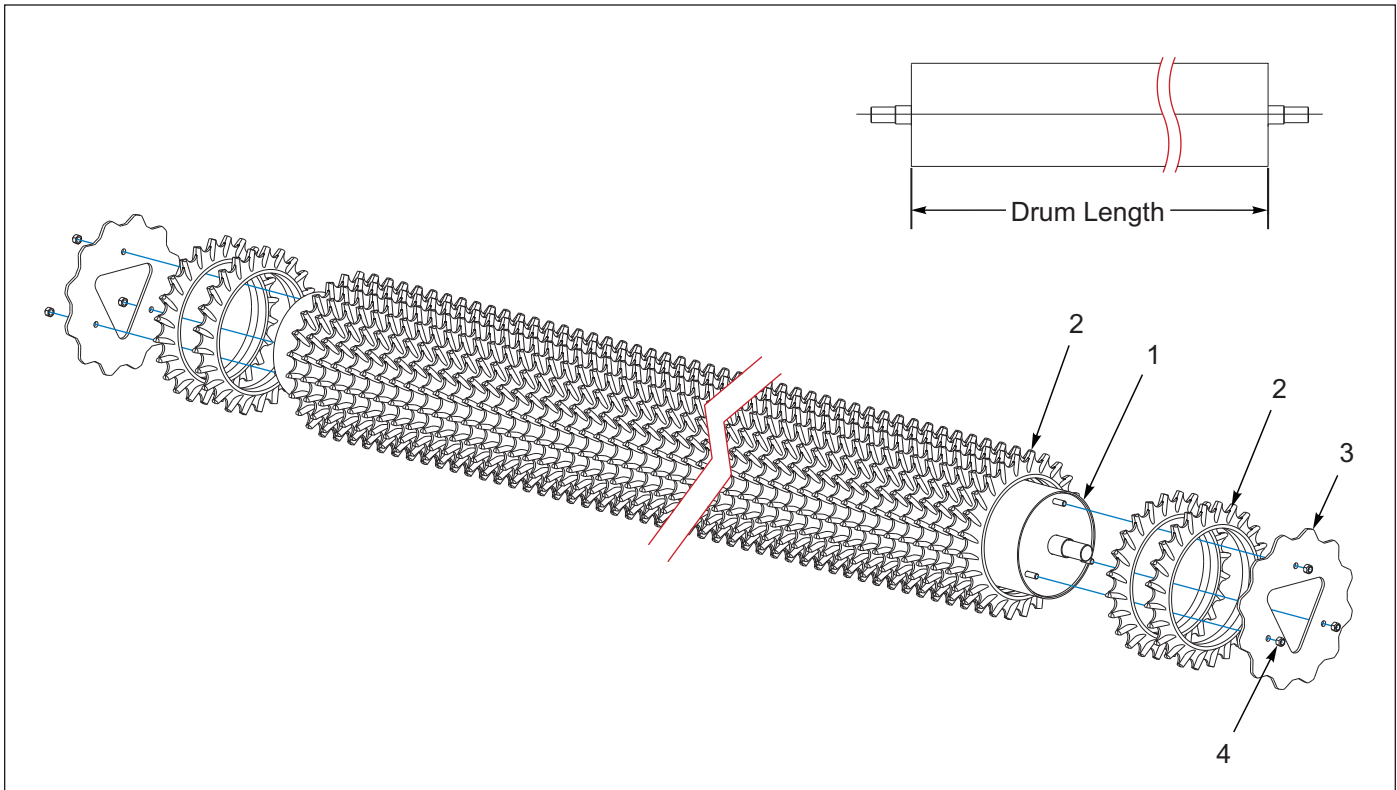


Figure 7-1: Roller Assembly

Roller Assembly

ITEM	PART NUMBER	DESCRIPTION	QTY									
			6	8	10	12	14	15	16	17	18	
		MODELS										
	5K810	ROLLER ASSY - PPF6B12	1	--	--	--	--	--	--	--	--	--
	5K809	ROLLER ASSY - PPF8B12	--	1	--	--	--	--	--	--	--	--
	5K066	ROLLER ASSY 10-20-12	--	--	1	--	--	--	--	--	--	--
	5K067	ROLLER ASSY 12-20-12	--	--	--	1	--	--	--	--	--	--
	5K068	ROLLER ASSY 14-20-12	--	--	--	--	1	--	--	--	--	--
	5K069	ROLLER ASSY 16-20-12	--	--	--	--	--	1	--	--	--	--
	5K070	ROLLER ASSY 16-20-12	--	--	--	--	--	--	1	--	--	--
	1P828	ROLLER ASSEMBLY 12-20-17	--	--	--	--	--	--	--	--	1	--
	6K310	ROLLER ASSEMBLY - 18-20-12	--	--	--	--	--	--	--	--	--	1
1	5K815	DRUM 12" X 6'	1	--	--	--	--	--	--	--	--	--
1	5K816	DRUM 12" X 8'	--	1	--	--	--	--	--	--	--	--
1	5K031	DRUM WLDMT 12" X 10'	--	--	1	--	--	--	--	--	--	--
1	5K032	DRUM WLDMT 12" X 12'	--	--	--	1	--	--	--	--	--	--
1	5K033	DRUM WLDMT 12" X 14'	--	--	--	--	1	--	--	--	--	--
1	5K034	DRUM WLDMT 12" X 15'	--	--	--	--	--	1	--	--	--	--
1	5K035	DRUM WLDMT 12" X 16'	--	--	--	--	--	--	1	--	--	--
1	1P827	DRUM 12" DIA X 17' LONG	--	--	--	--	--	--	--	--	1	--
1	6K313	DRUM WLDMT 12" X 18'	--	--	--	--	--	--	--	--	--	1
2	4K392	20"FLOATING RING WHEEL	30	40	50	60	70	75	80	85	90	
3	4K988	RETAINER - 19" DIA	2	2	2	2	2	2	2	2	2	
4	1-512-010005-13	NUT LOCK 5/8-11 GR8 ZP	6	6	6	6	6	6	6	6	6	

Warning Lamps

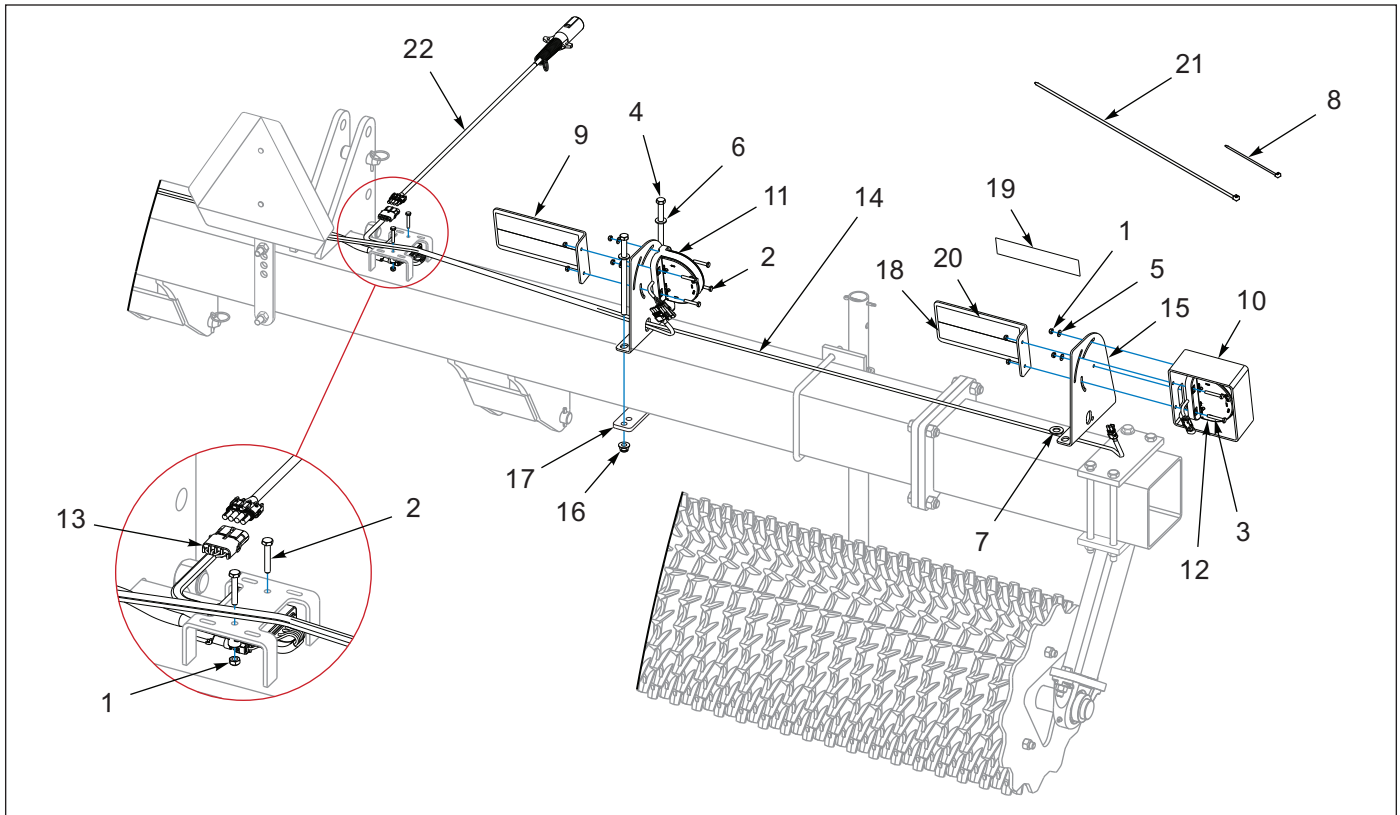


Figure 7-2: Warning Lamps (PPF10-18)

Warning Lamps

ITEM	PART NUMBER	DESCRIPTION	QTY
1	1-512-010005-01	NUT,HEX,SLFLKG GRB 1/4-20	18
2	1-654-010047-08	SCREW HX CP,1/4-20UNCX1-1/2G5	10
3	1-654-010047-09	SCREW,HX CP,1/4-20UNCX1-3/4G5	8
4	1-654-010055-22	SCREW HEX CAP 1/2-13X8-1/2	4
5	1-861-010032-06	WASHER, FLAT 1/4 N ZP/CD	8
6	1-861-010032-14	WASHER, FLAT 1/2" N ZP/CD	4
7	1-861-010032-18	WASHER, FLAT 5/8 N ZP/CD	4
8	105-0228	TYWRAP 8IN LG TY-5272MX	12
9	164697	PLATE CONSPICUITY DECAL MOUNT	4
10	164700	TUBE LIGHT SHIELD	2
11	174435	LAMP, AG RED SINGLE LED	2
12	174436	LAMP, AG AMBER SINGLE LED	2
13	174437	MODULE, AG FLASHER CONTROL	1
14	178513	HARNES, LAMP 66 X 138	1
15	188040	BRACKET, LIGHTMOUN T	4
16	2P253	NUT, FLANGE NY-LOK 1/2-13	4
17	4K970	STRAP	2
18	528933	REFLECTOR - RED	4
19	528934	REFLECTOR - YELLOW	2
20	528938	STRIPE, ORANGE	4
21	7K678	CABLE TIE	12
22	178514	HARNES,7 PIN/4PIN WP, 10'	1

Decals



ITEM 1
8J309



ITEM 5
4K103



ITEM 2
528934



ITEM 3
528933



ITEM 4
528938



ITEM 6
2P151



ITEM 7
2-573-010198



ITEM 8
232188



ITEM 9
144193



ITEM 10
1-573-010006

Figure 7-3: Decals

Decals

ITEM	PART NUMBER	DESCRIPTION	QTY
1	8J309	DECAL - 'CAUTION'	1
2	528934	REFLECTOR - YELLOW	2
3	528933	REFLECTOR - RED	REF
		(PPF6-8, QTY=2) (PPF8-10, QTY=4)	
4	528938	STRIPE, ORANGE (PPF8-10 ONLY)	4
5	4K103	DECAL-BRILLION(3 3/4 X 16 3/4)	4
6	164678	MOUNT, SMV	1
7	2-573-010198	DECAL, MEMBER FEMA	1
8	232188	DECAL, QR CODE PULVERIZER	1
9	144193	DECAL, SIS 20 MPH	1
10	1-573-010006	PLACARD, NAME	1
11	107-0814	RIVET 1/8X1/8 A LUM POP (HARDWARE FOR ITEM 10)	2

Decal Locations

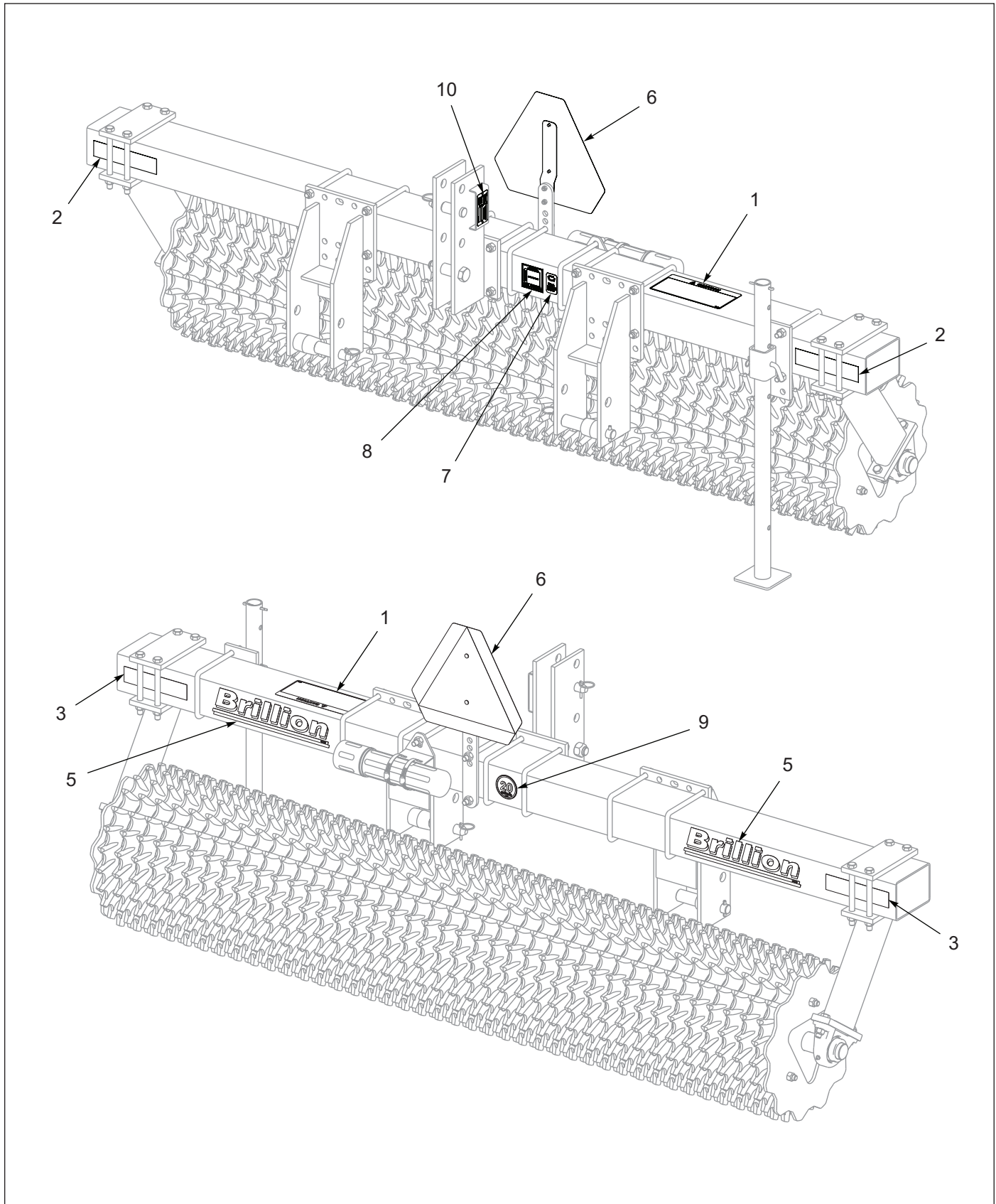


Figure 7-4: Decal Locations, PPF6-8

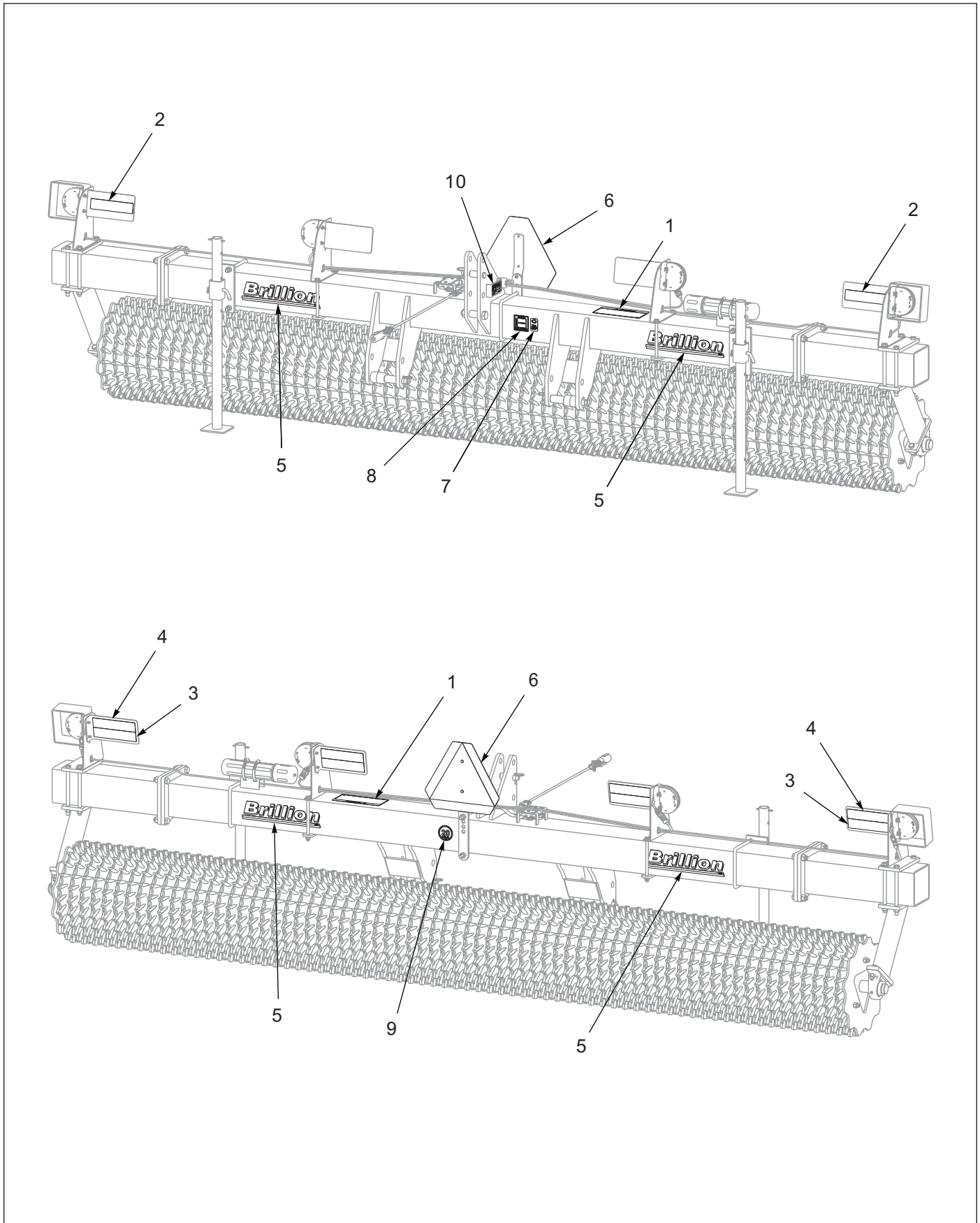


Figure 7-5: Decal Locations, PPF10-18

Glossary

For clarity this glossary of industry standard abbreviations and their definitions are provided.

A

ASM Assembly

B

BATT Battery
BHSC Button Head Socket Cap
BLK Black

C

CB Carriage Bolt
CONN Connector
CRG Carriage
CTSK Countersunk
CTWT Counterweight
CVR Cover
CYD Cylinder

D

DBL Double
DIA Diameter

E

ENCLSD Enclosed

F

FHCS Flanged Head Cap Screw
FHHCS Flanged Hex Head Cap Screw
FL OR FLG Flange
FLT Flat

G

GA Gauge

H

HHCS Hex Head Cap Screw
HCS High Carbon Steel
HD Head
HLCL Helical
HCSKT Hex Socket
HSFC Hex Socket Flat Countersunk
HYD Hydraulic

I

ID Inside Diameter

L

LH Lefthand
LKG OR LOCK Locking
LWR Lower

M

MANF Manifold
MNT Mount

N

NRW Narrow
----- Not Serviced Separately

O

OD Outside Diameter
OHG Overhead Guard
ORFS OR ORS O-Ring Seal
ORP OR ORB O-Ring Boss

P

P-STEER Power Steering
PTFE Polytetrafluoroethylene (Teflon)

GLOSSARY

R

RH Righthand
RND Round

S

SER Series
SHCS Socket Head Cap Screw
SHLD Shield
SKT Socket
SLFLKG Selflocking
SOC Socket
SPDT Single Pole Double Throw
SPR Spring
SQ Square
SRTD Serrated
SSCR Setscrew
SST Stainless Steel
STD Standard

U

UPR Upper

W

WHL Wheel
WLD OR WLDMT Weldment

Index

Numerics

104032 7-2, 7-4

105-0093 7-2, 7-4

105-0228 7-8

107-0814 7-10

1-116-010019 7-2, 7-4

123096 7-6

141777 7-2, 7-4

144193 7-10

147072 7-2, 7-4

1-512-010005-01 7-8

1-512-010005-13 7-2, 7-4, 7-6, 7-7

1-512-010005-15 7-4

1-512-010005-19 7-2, 7-4

1-557-010327 7-2, 7-4

1-557-010362-65 7-2, 7-4

1-573-010006 7-10

164678 7-2, 7-4, 7-10

164697 7-8

164700 7-8

1-654-010047-08 7-8

1-654-010047-09 7-8

1-654-010049-05 7-2, 7-4

1-654-010055-22 7-8

1-654-010059-07 7-6

1-654-010059-24 7-6

1-654-010061-07 7-4

174435 7-8

174436 7-8

174437 7-8

178513 7-8

178514 7-8

1-861-010032-06 7-8

1-861-010032-09 7-2, 7-4

1-861-010032-14 7-8

1-861-010032-18 7-8

188040 7-8

1J801 7-2

1K247 7-2

1K285 7-2

1P827 7-7

1P828 7-6, 7-7

232188 7-10

2-573-010198 7-10

2P151 7-2, 7-4

2P253 7-8

3C335 7-2, 7-4

4K103 7-10

4K392 7-7

4K970 7-8

4K988 7-7

4K989 7-4

4K990 7-4

4K991 7-4

4K993 7-6

528933 7-8, 7-10

528934 7-8, 7-10

528938 7-8, 7-10

5D157 7-2, 7-4

5D158 7-2, 7-4

5K031 7-7

5K032 7-7

5K033 7-7

5K034 7-7

5K035 7-7

5K066 7-6, 7-7

5K067 7-6, 7-7

5K068 7-6, 7-7

5K069 7-6, 7-7

5K070 7-6, 7-7
5K196 7-6
5K766 7-4
5K769 7-6
5K809 7-6, 7-7
5K810 7-6, 7-7
5K811 7-2
5K812 7-2
5K815 7-7
5K816 7-7
6C400 7-2, 7-4
6D529 7-2, 7-4
6D988 7-2, 7-4
6K309 7-4
6K310 7-6, 7-7
6K313 7-7
7J375 7-2, 7-4
7K678 7-8
8D425 7-2, 7-4
8D427 7-2, 7-4
8J309 7-10
8K645 7-2
9D047 7-2, 7-4
9D112 7-4

Instructions for Ordering Parts

**** Repair parts must be ordered through an Authorized Dealer ****

DEALER INSTRUCTIONS FOR ORDERING PARTS FROM LANDOLL PARTS DISTRIBUTION CENTER

Phone #: 800-423-4320 or 785-562-5381

Fax #: 888-527-3909

Order online: dealer.landoll.com

DATA PLATE

The Data Plate, which lists the model number and serial number, is located on the left side of the Floating Ring Pulverizer.

SERIAL NUMBER

The following information will help decode the trailer serial number.

PXD2400100 = xxmysssss

xx	= model series (i.e. "PX" for all Pulverizers)
m	= month of manufacture (ex. "D" means April. The letter I is not used)
yy	= last digits of the year manufactured (ex. "24" means 2024)
sssss	= Sequential number used to track warranty and service information.

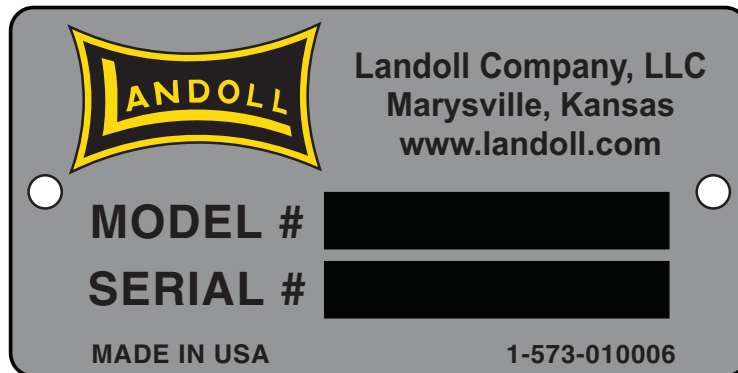


Figure: Data Plate

Manuals for PPF Floating Ring Pulverizer

Manual Number	Manual Type
6K107	Operator's and Parts Manual

Document Control Revision Log:

Date	Form #	Improvement(s): Description and Comments
11/2010	6K107-1110	Landoll Branding
08/2024	6K107-2408	ECN 50088 - Add Decals: QR Code, FEMA, 20MPH Update Template *Revised Format (Year/Month)
12/2024	6K107-2412	ECN 50331 - Warning Lights Decal Pages



intertek

Equipment from Landoll Company, LLC is built to exacting standards ensured by ISO 9001:2015 registration at all Landoll manufacturing facilities.

Floating Ring Pulverizer Models PPF6-18 Operator's and Parts Manual

Re-Order Part Number 6K107

LANDOLL COMPANY, LLC

1900 North Street

Marysville, Kansas 66508

(785) 562-5381

800-428-5655 ~ WWW.LANDOLL.COM



Copyright 2024. Landoll Company, LLC

“All rights reserved, including the right to reproduce this material or portions thereof in any form.”

