

MVSC-220 series

SOLENOID VALVE



mindman



Features



Selection table



Blocking plate



Technical data



Caution for safety
(Read before installing)

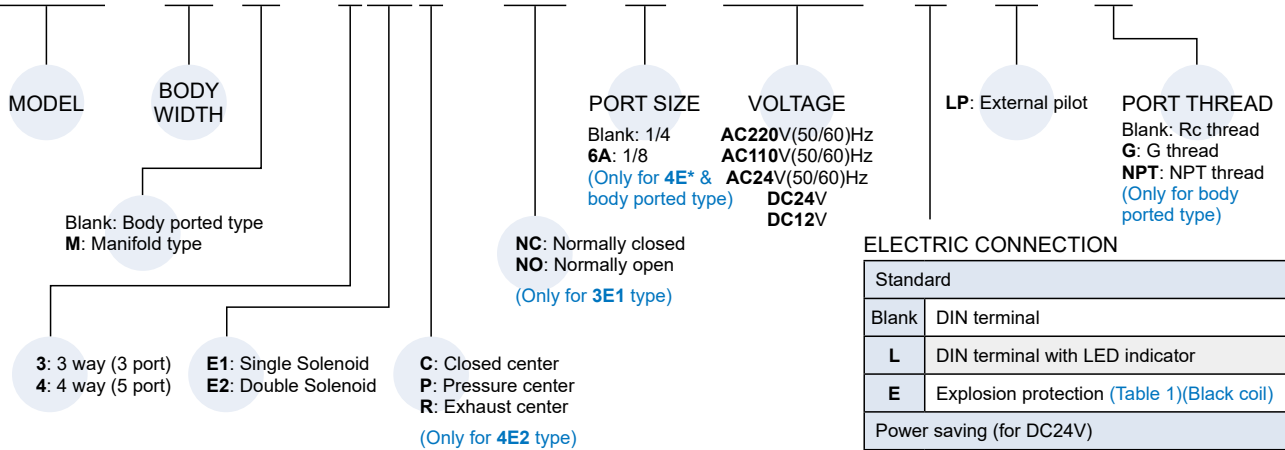


Specification

Model	3E1	3E2	4E1	4E2	4E2 C.P.R	
Bore No.	8A		6A, 8A			
Port size	1/4		1/8, 1/4			
No. of port	3		5			
No. of position	2		2		3	
Medium	Air					
Operating pressure range	0.2~0.8 MPa			0.3~0.8 MPa		
Operating pressure (LP)	0~0.8 MPa					
Pilot pressure range (LP)	(0.34×P(*1)+0.1)~0.5 MPa					
Proof pressure	1 MPa					
Effective orifice	18 mm ²			16 mm ²		
Response time	30 ms			40 ms		
Ambient temperature	-5~+50°C (No freezing)					
Voltage	AC110V, 220V, 24V (50/60)Hz, DC24V, 12V					
Power consumption	Standard	AC=4.8/4.4VA, 6/4.9VA, 6.7/5.4VA, DC=2W, 2.5W				
	Power saving	DC24V=Start: 2W(*2) Power saving: 0.5W				
Available voltage range	±10%					
Insulation class	F class					
Weight (g)	Valve	181	294	198	313	352
	Manifold	3B : 56n+77 (*3) 3M : 71n+114		5B : 61n+61 5M : 137n+157 (*3)		

Order example of valve

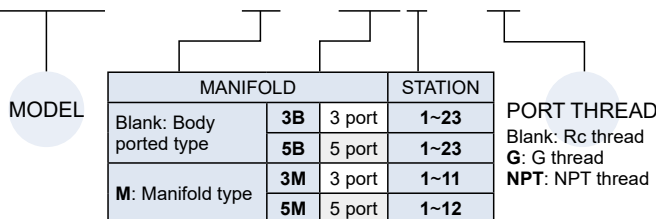
MVSC – 220M – 4E2C – NC – □ – AC110 – L – LP – G



*1. P: Operating pressure *2. Power saving covert time 100ms. *3. n: Stations

Order example of manifold

MVSC – 220M – 5M3 – G



* Starting from 11 stations, manifolds are made to order.

Table 1

Property for explosion-proof type

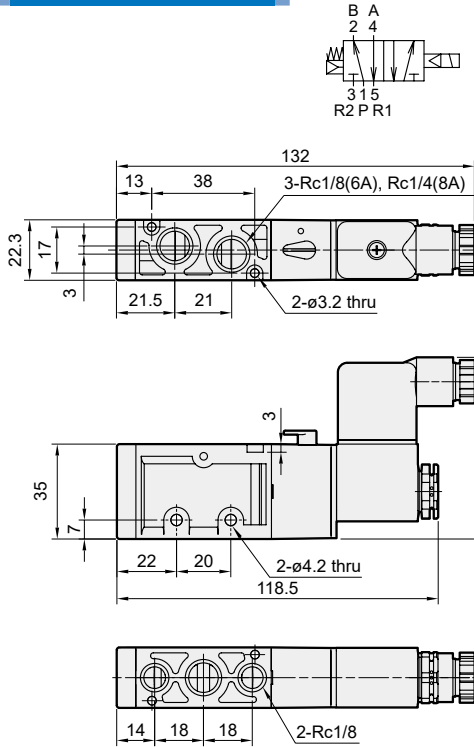
Anti-explosion class	Ex mb IIC T4 Gb
Voltage	AC110V / 220V(50/60)Hz, DC24V
Power consumption	AC110V=4.5VA, AC220V=4.8VA, DC=5W
Available voltage range	±10%
Insulation class	F class
Wire length	3 m

MVSC-220 Dimensions

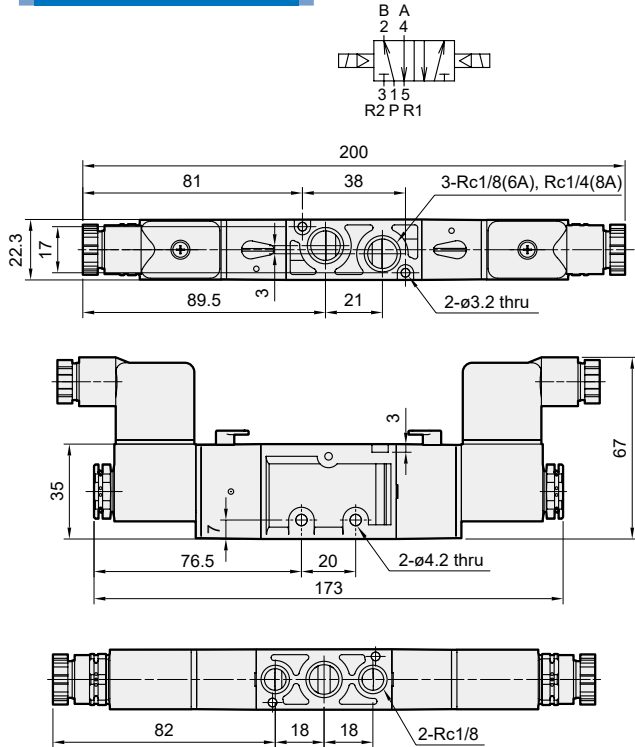
SOLENOID VALVE



MVSC-220-4E1

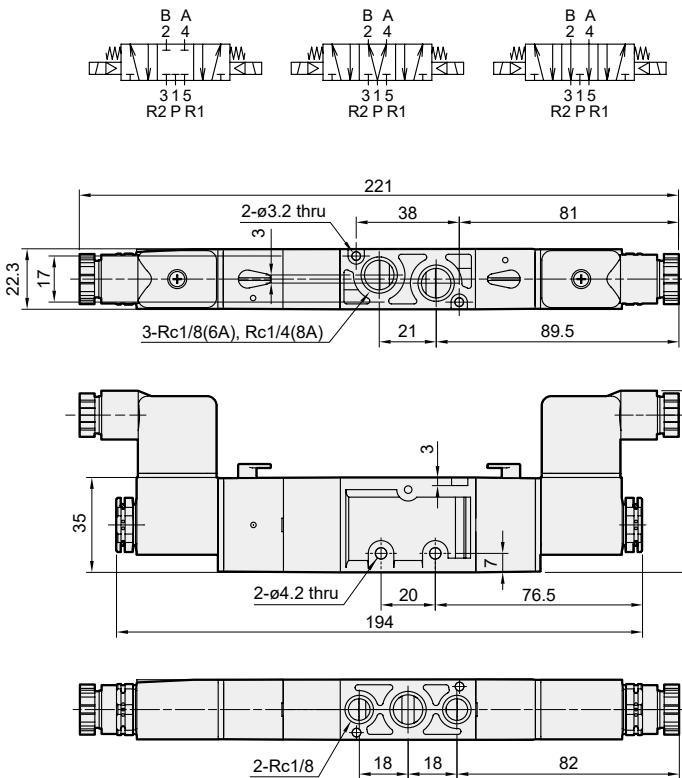


MVSC-220-4E2

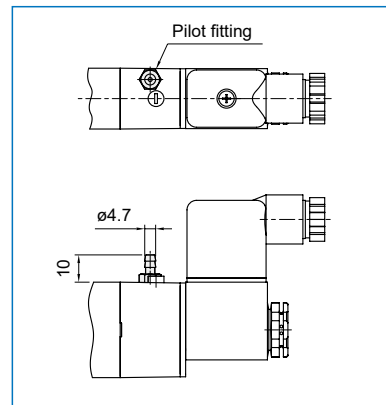


MVSC-220-4E2C.PR

MVSC-220-4E2C MVSC-220-4E2P MVSC-220-4E2R

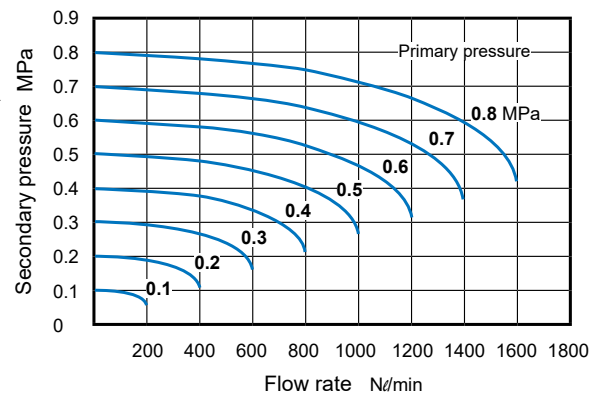


LP



Flow features

MVSC-220-3E1/3E2/4E1/4E2

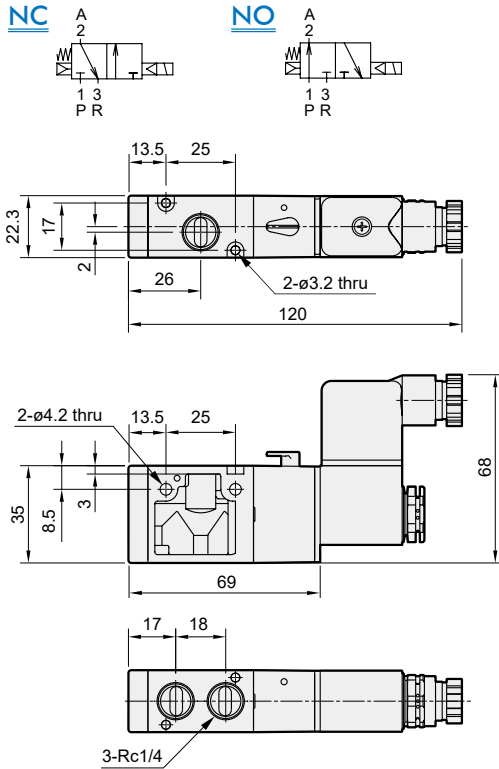


MVSC-220 Dimensions

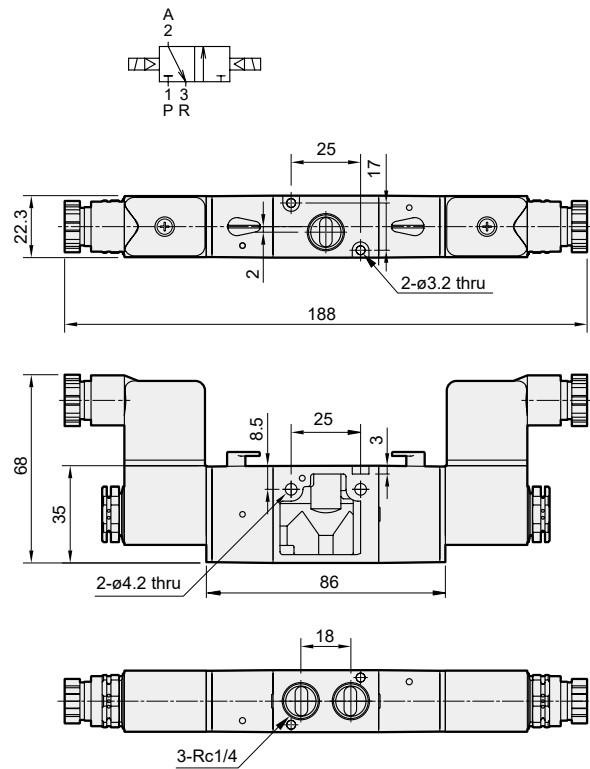
SOLENOID VALVE



MVSC-220-3E1-NC/NO



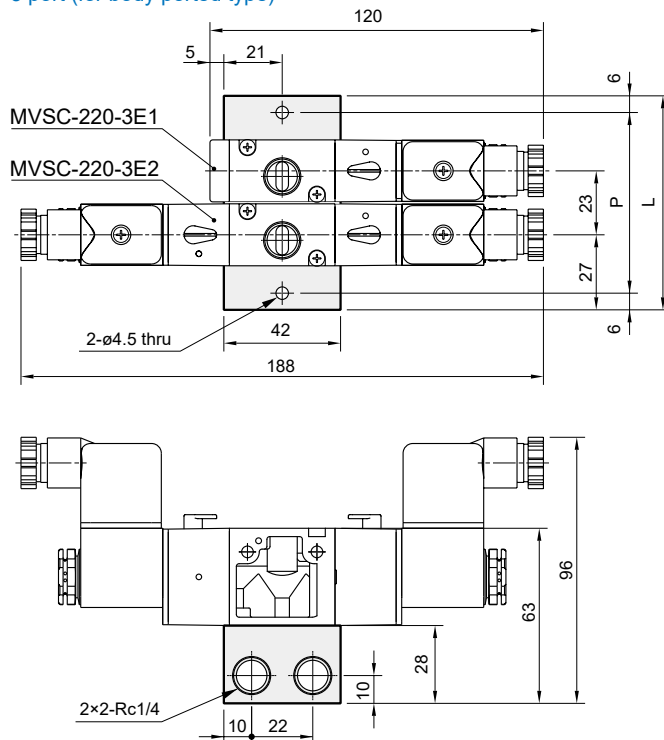
MVSC-220-3E2



Manifold of solenoid valve

MVSC-220-3B*

3 port (for body ported type)



No. of stations	P	L
1	42	54
2	65	77
3	88	100
4	111	123
5	134	146
6	157	169
7	180	192
8	203	215
9	226	238
10	249	261

P: (No. of stations-1)×23+42
L: (No. of stations-1)×23+54

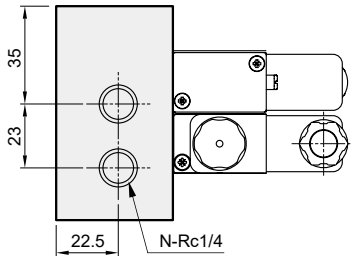
MVSC-220 Manifold

SOLENOID VALVE



MVSC-220M-3M*

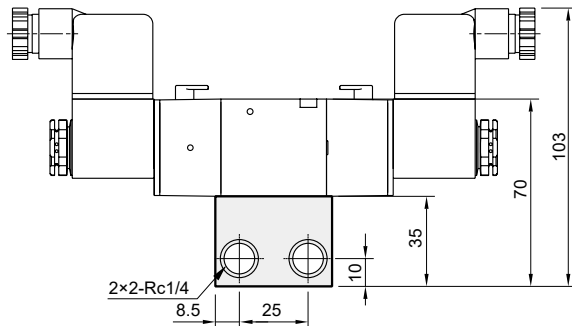
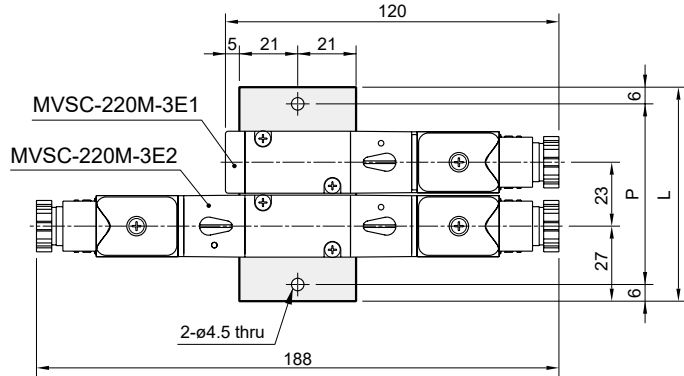
3 port (for manifold type)



No. of stations (N)	P	L
1	42	54
2	65	77
3	88	100
4	111	123
5	134	146
6	157	169
7	180	192
8	203	215
9	226	238
10	249	261

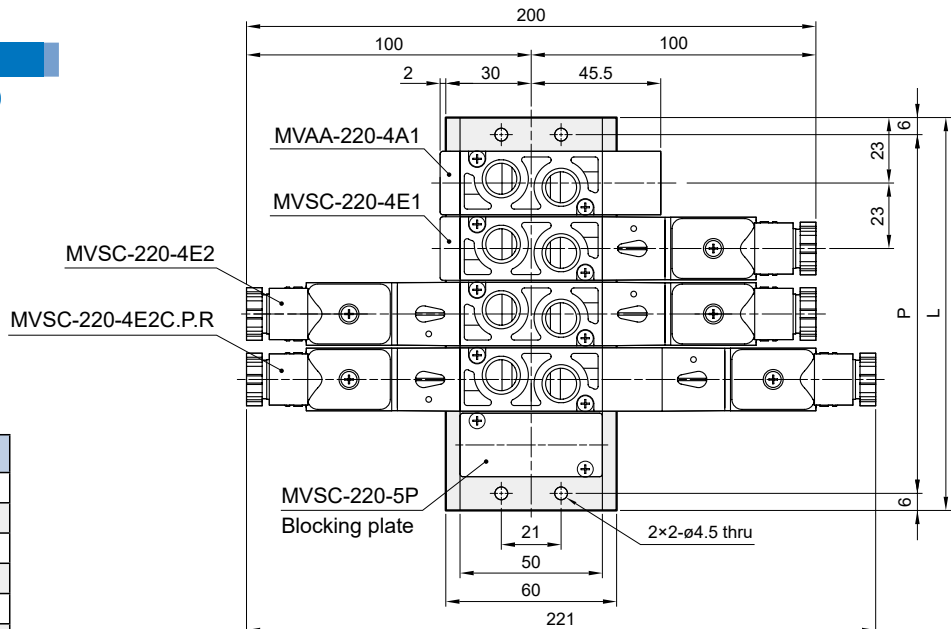
P: (No. of stations-1)×23+42

L: (No. of stations-1)×23+54



MVSC-220-5B*

5 port (for body ported type)



No. of stations	P	L
1	34	46
2	57	69
3	80	92
4	103	115
5	126	138
6	149	161
7	172	184
8	195	207
9	218	230
10	241	253

P: (No. of stations-1)×23+34

L: (No. of stations-1)×23+46

