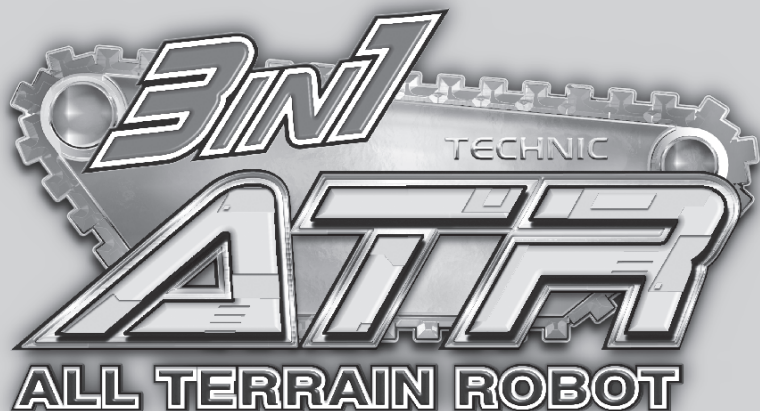
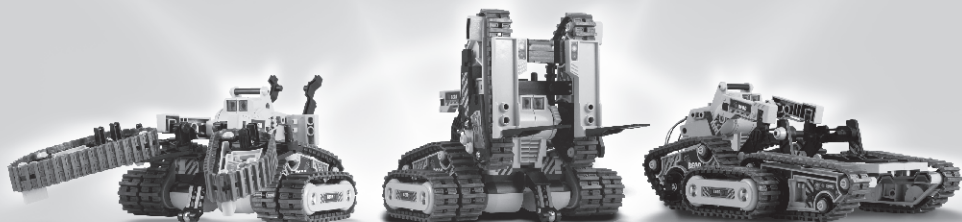


GE-536N

Pro'sKit®



三合一變形坦克



Assembly & Instruction Manual

組裝說明手冊

目錄

有線遙控器

產品介紹	P.1
自備工具	P.1
零件清單	P.1
塑膠模型零件	P.2
裝飾貼紙	P.2
組裝說明	P.2

3合1變形坦克車

產品介紹	P.7
零件清單	P.8
塑膠模型零件	P.9
模組組裝	P.10
坦克車組裝說明	P.25
夾爪車組裝說明	P.33
推高機組裝說明	P.40

操作方式	P.47
------------	------

簡易故障排除	P.49
--------------	------

電路圖	P.49
-----------	------

有線遙控器

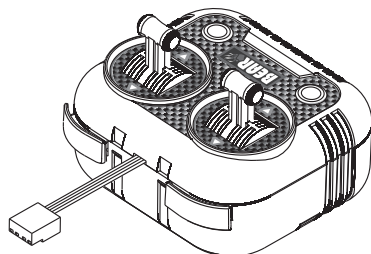
產品介紹

控制器可因應變形坦克車的不同型態有效控制前進、後退、左轉、右轉、夾取和抬舉物品等動作。



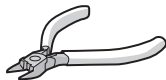
警告

1. 本玩具內含小物件，請勿讓三歲以下孩童取得，以免放入口中造成窒息。
2. 兒童使用剪切工具時，請家長指導使用方式，並請在家長監督下使用，以免發生意外。
3. 為避免嬰兒或兒童產生窒息的危險，請於拆卸後立即將塑膠袋銷毀或遠離嬰兒及兒童。



自備工具如下

斜口鉗



十字起子



電池(AA) x 4



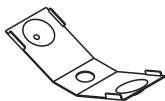
DC 1.5V x 4

零件清單

! 部分零件含有銳利的邊緣及尖角，組裝時請注意。

P1

彈片



數量

2

P2

自攻螺絲

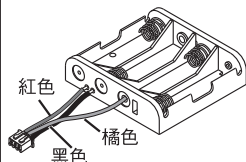


數量

5
(3x7)

P3

電池盒



數量

1

P4

電路板

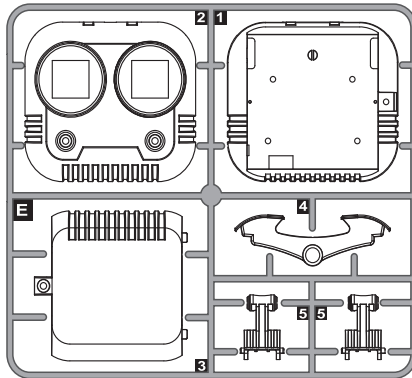


數量

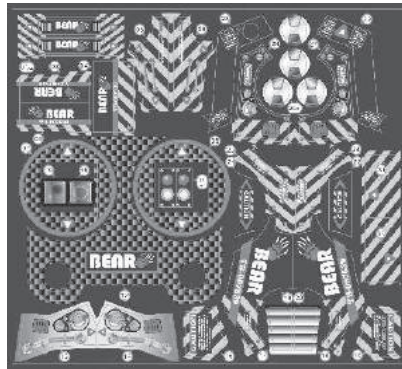
1

塑膠模型零件

E

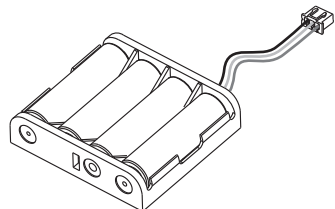
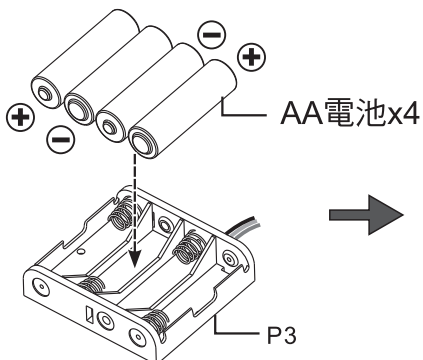


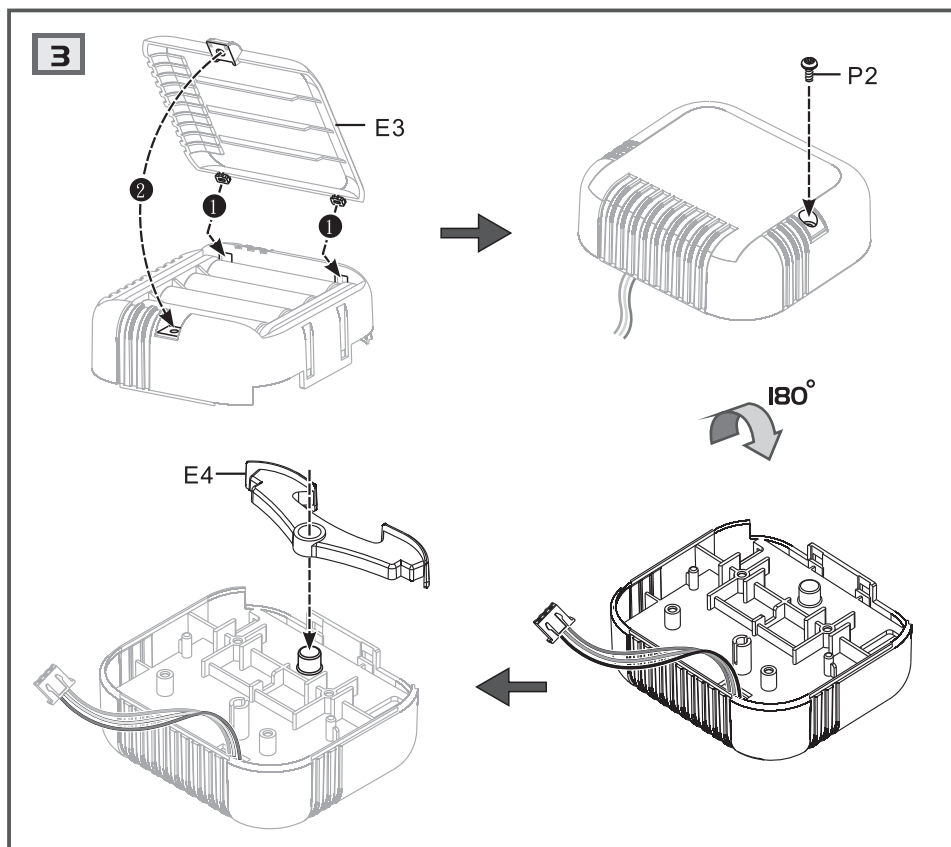
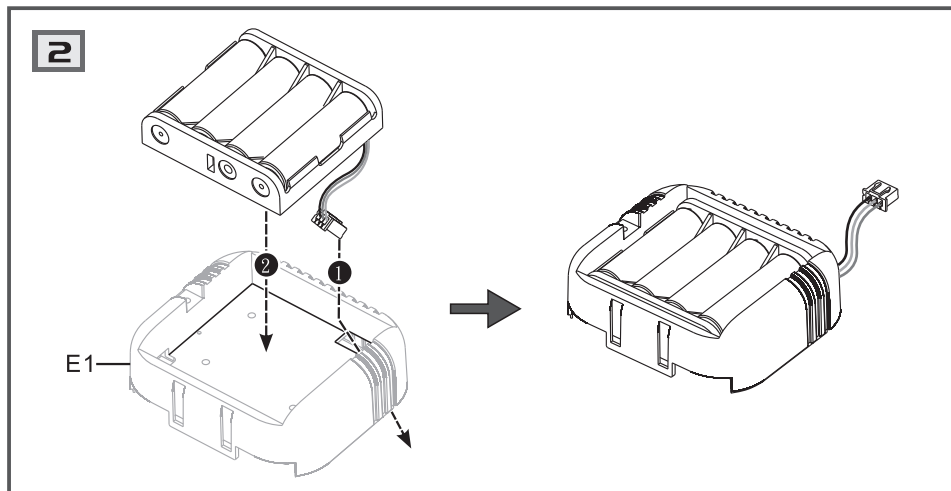
裝飾貼紙



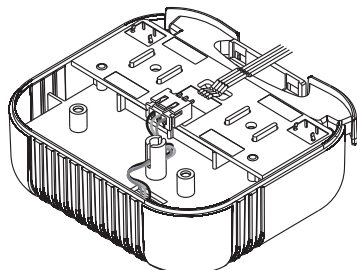
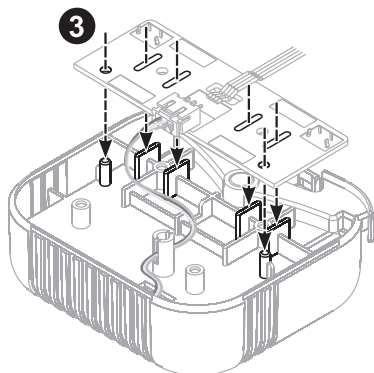
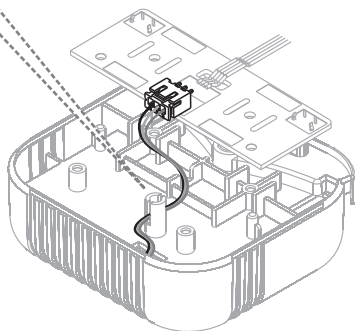
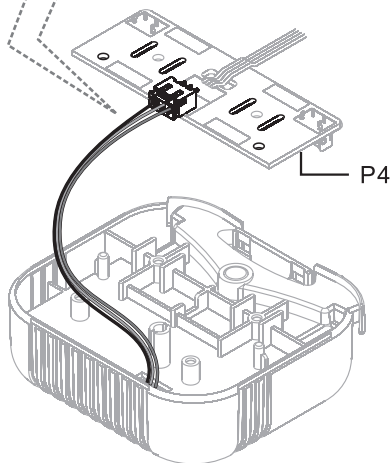
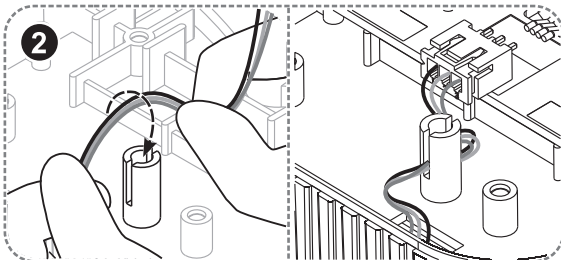
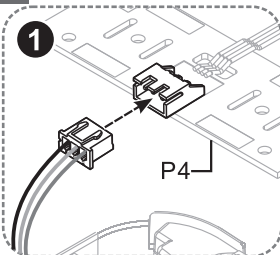
組裝說明

I

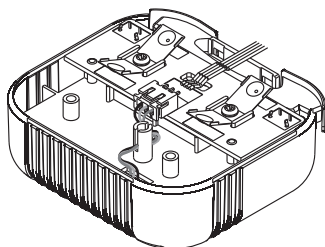
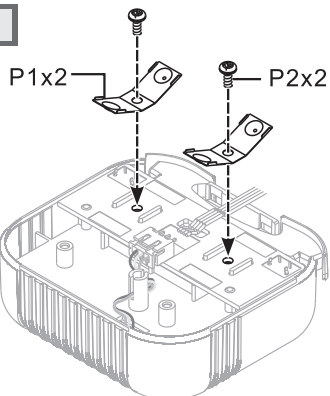




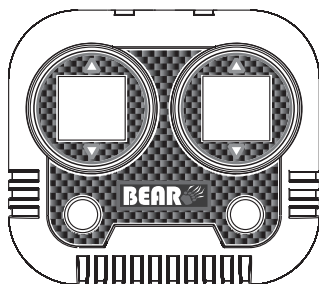
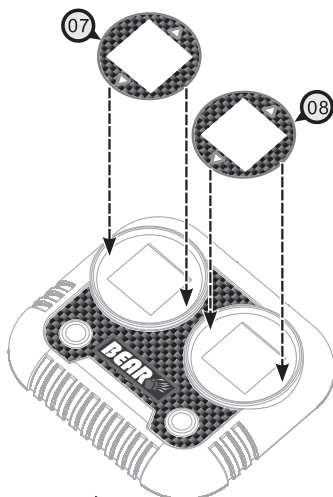
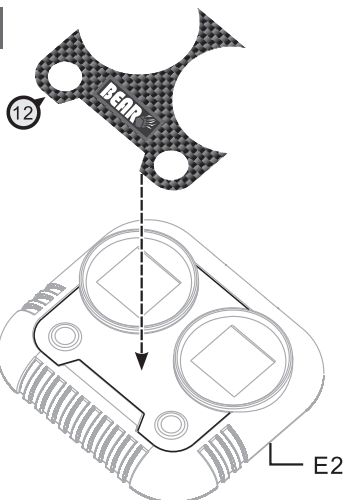
4



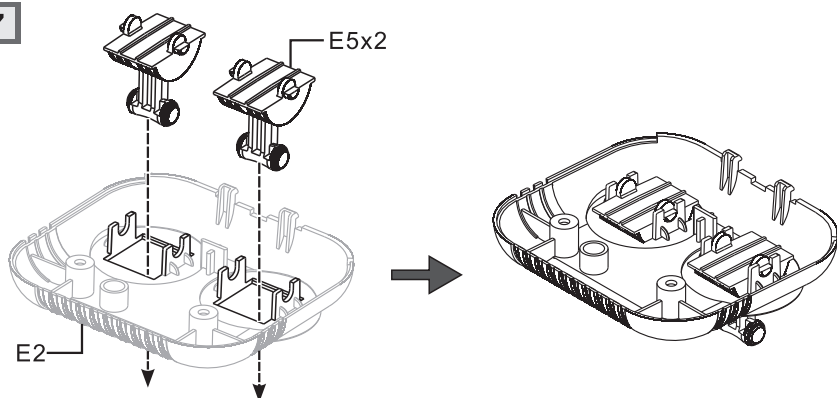
5



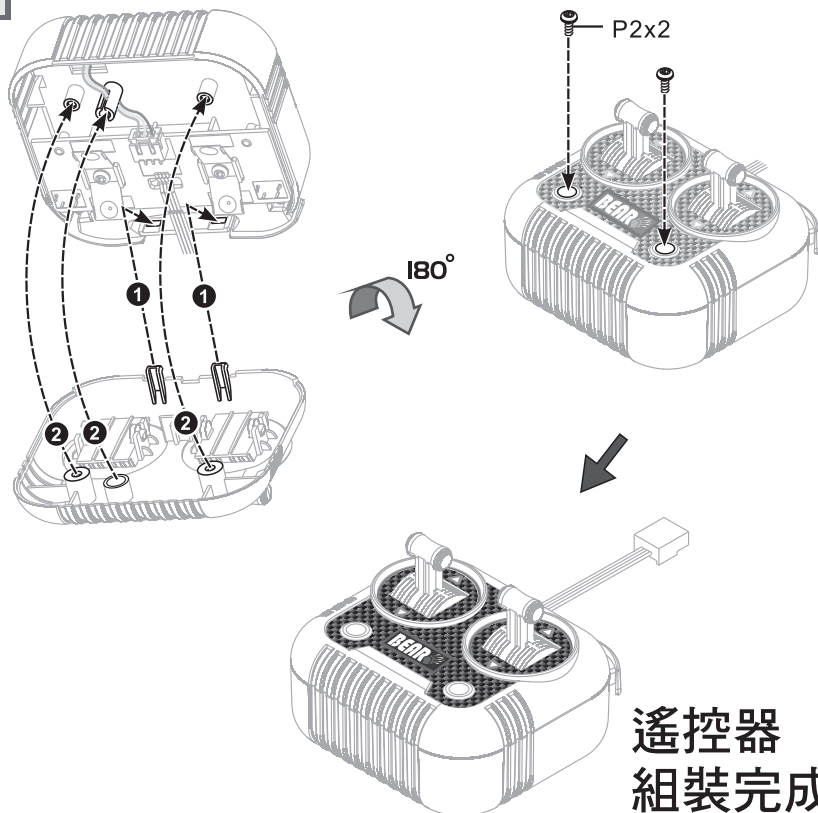
6



7



8

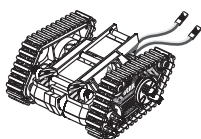


3合1變形坦克車

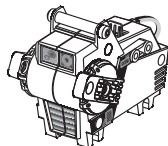
產品介紹

歡迎購買實工GE-536N 3合1變形坦克。這是一款多功能的履帶型自走式坦克車，透過以下10種模組的不同組合方式，它還可以變身為坦克車、推高機及夾爪車。履帶型自走式設計，輕易征服各種崎嶇地形！利用線控方式，操縱變型坦克前進、後退、轉彎V夾取和抬舉物品。推薦13歲以上青少年嘗試獨立組裝，父母在旁陪伴，青少年可從中得到自我滿足的成就感，同時快樂的享受親子共遊的樂趣。

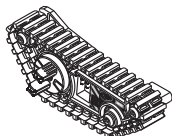
1 基座



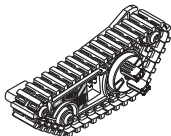
2 齒輪箱



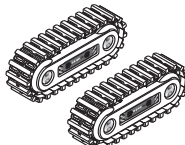
3 履帶組(右前)



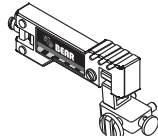
4 履帶組(左前)



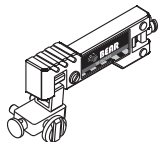
5 履帶組(中間)



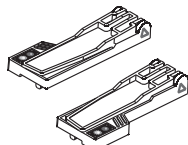
6 右臂模組



7 左臂模組



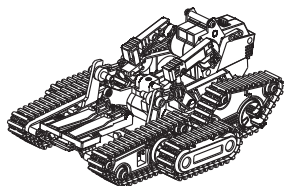
8 升降桅桿組



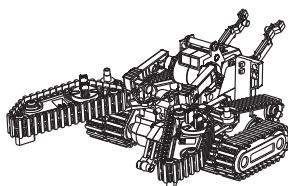
9 連接模組A



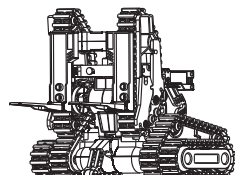
10 連接模組B



坦克車



夾爪車



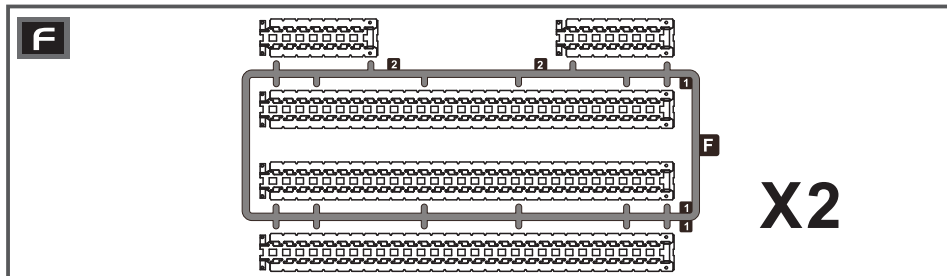
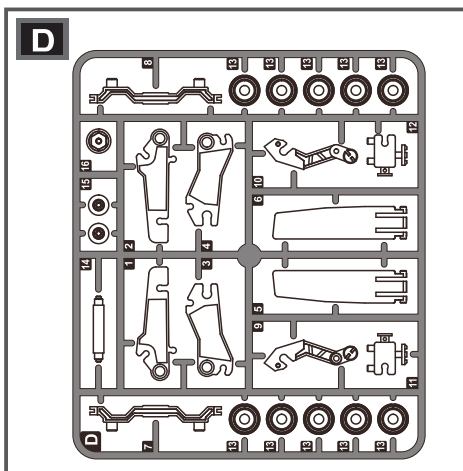
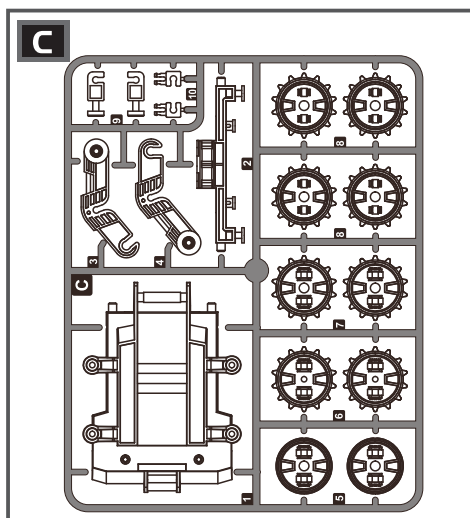
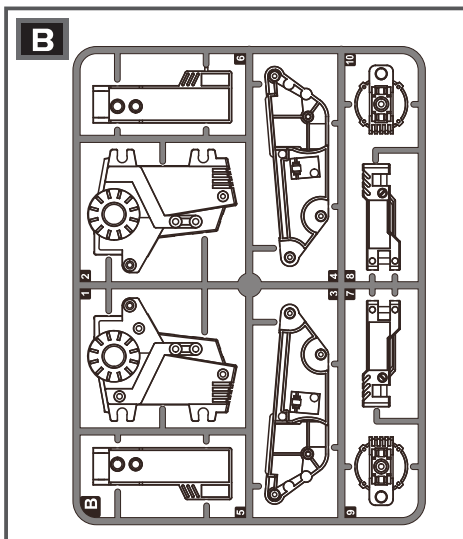
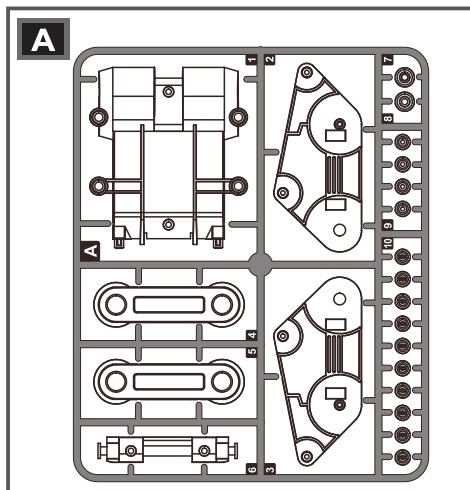
堆高機

零件清單

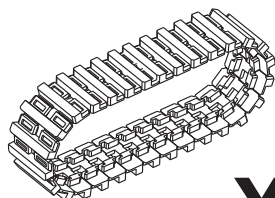
！ 部分零件含有銳利的邊緣及尖角，組裝時請注意。

P1 馬達端子組  <div>黃色</div> <div>黑色</div> <div>數量</div> <div>2</div>	P2 馬達端子組  <div>紅色</div> <div>黑色</div> <div>數量</div> <div>1</div>	P3 小齒輪  <div>數量</div> <div>2</div>
P4 齒輪(灰色)  <div>數量</div> <div>2</div>	P5 齒輪(棕色)  <div>數量</div> <div>1</div>	P6 齒輪(黃色)  <div>數量</div> <div>4</div>
P7 轉接齒輪(橘色)  <div>數量</div> <div>1</div>	P8 齒輪(白色)  <div>數量</div> <div>2</div>	P9 六角軸齒輪組  <div>數量</div> <div>2</div>
P10 六角出力齒輪(灰色)  <div>數量</div> <div>1</div>	P11 自攻螺絲(短)  <div>數量</div> <div>3 (2.6x6)</div>	P12 自攻螺絲(長)  <div>數量</div> <div>11 (2.6x10)</div>
P13 華司螺絲  <div>數量</div> <div>14 (2.6x6)</div>	P14 六角軸  <div>數量</div> <div>1</div>	P15 圓軸  <div>數量</div> <div>3</div>
P16 小鋼珠  <div>數量</div> <div>1</div>	P17 電路板  <div>數量</div> <div>1</div>	

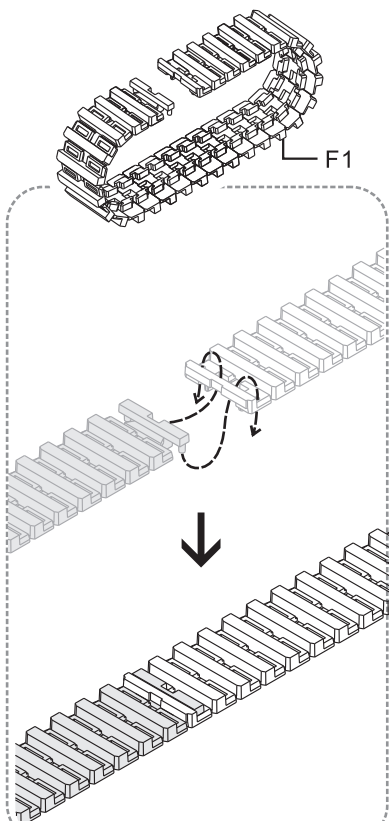
塑膠模型零件



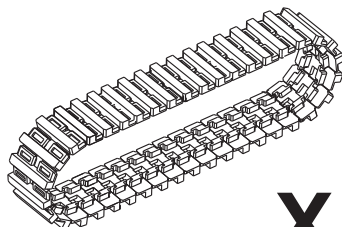
短履帶



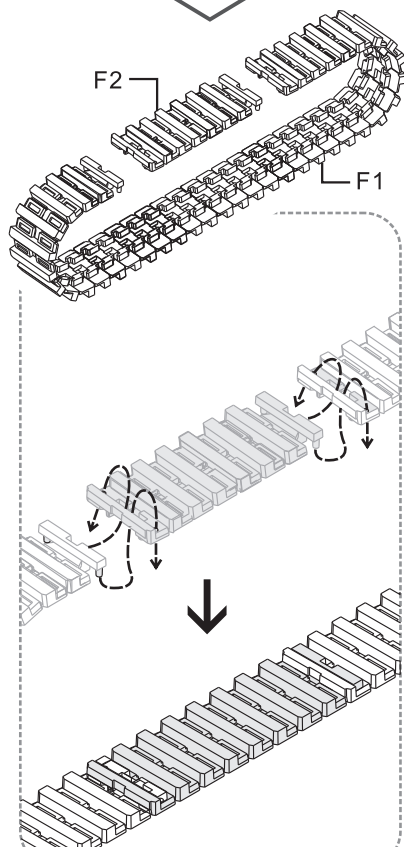
X2



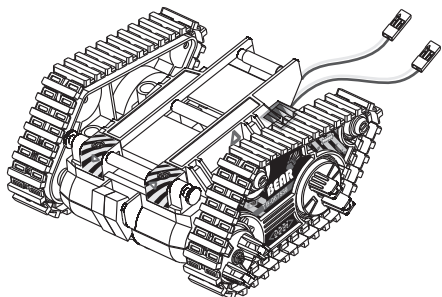
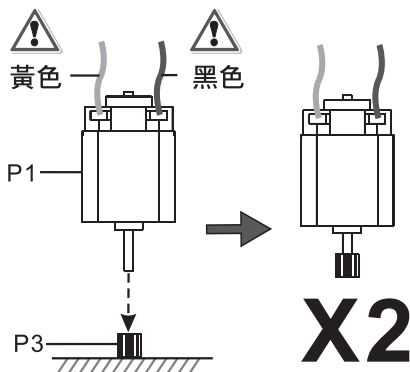
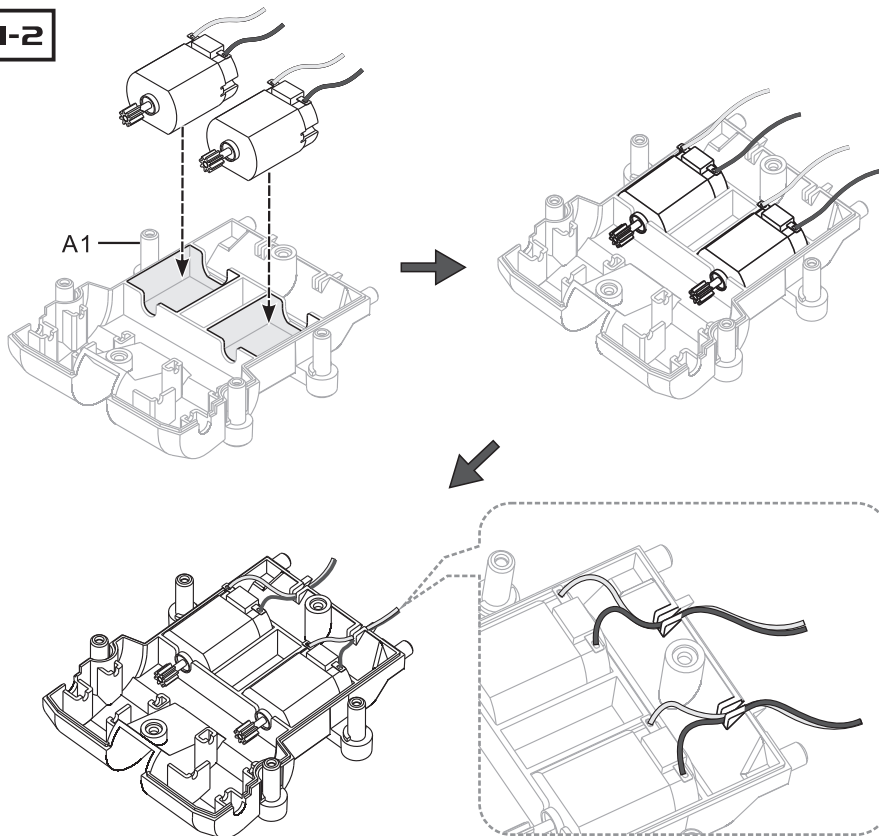
長履帶

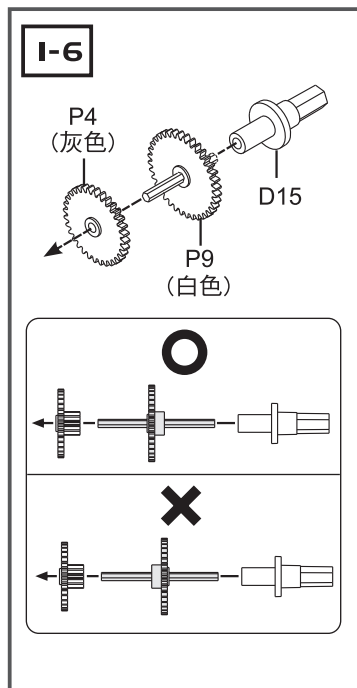
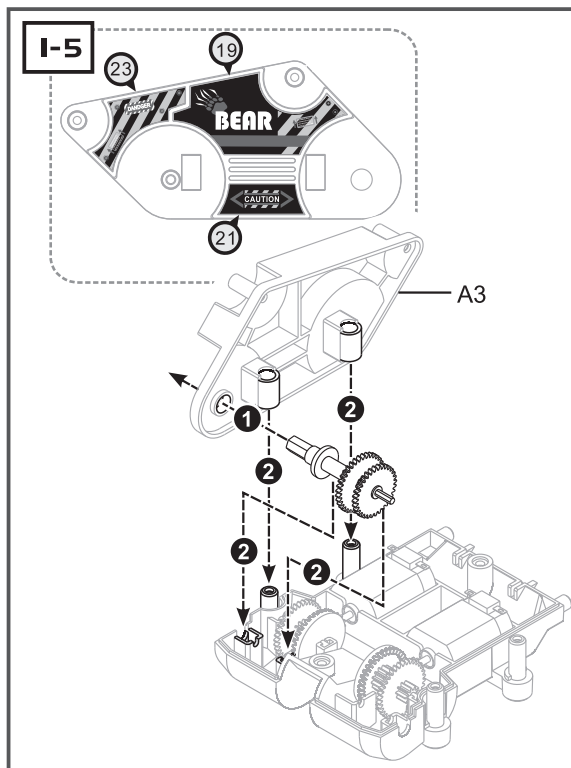
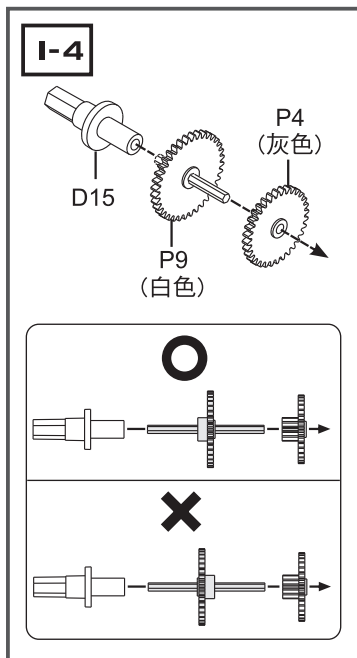
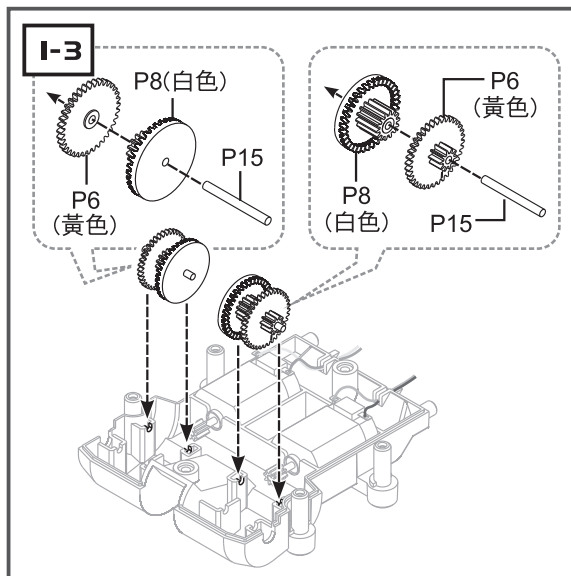


X4

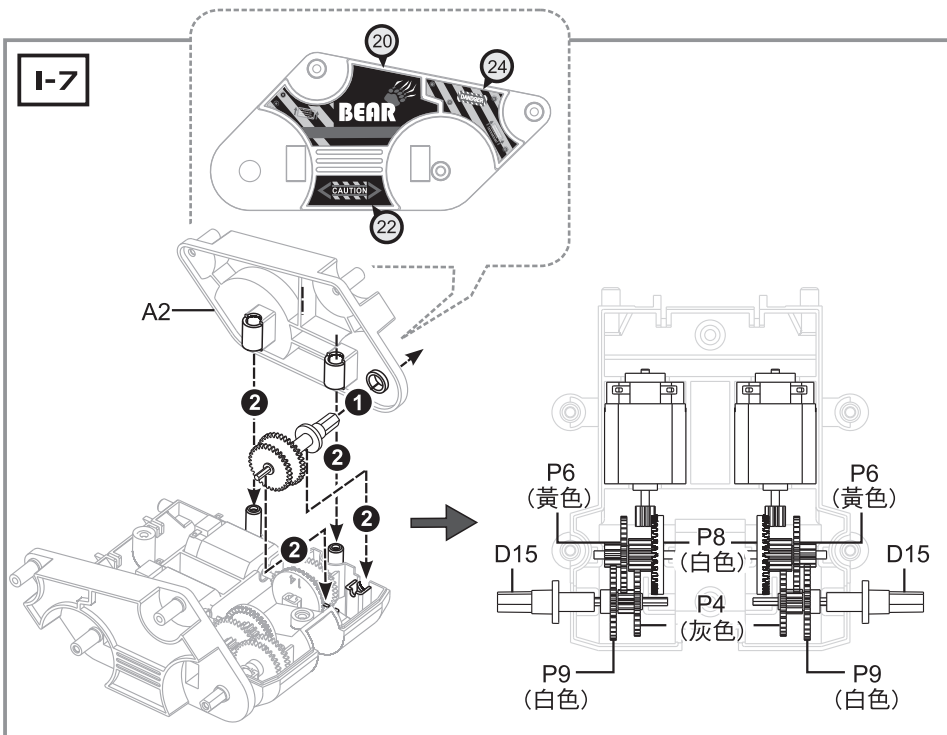


請勿將履帶置於陽光直射或高溫環境下，以免扭曲變形。

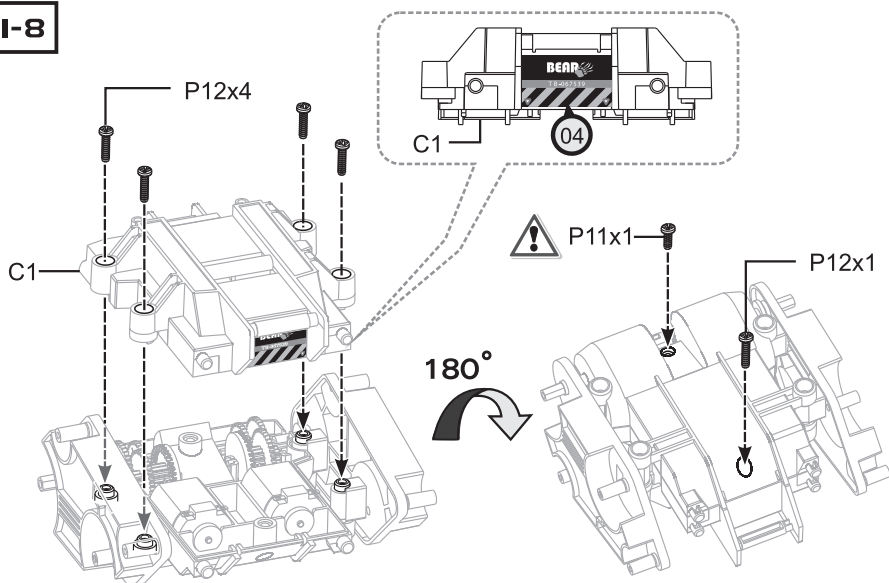
I**基座****I-1****I-2**



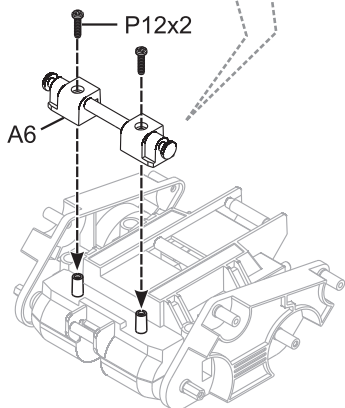
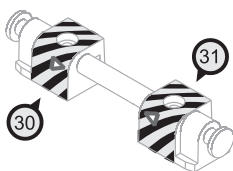
I-7



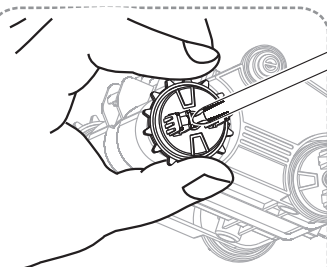
I-8



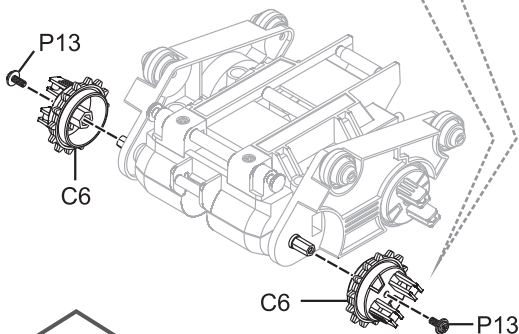
I-9



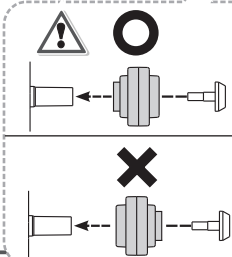
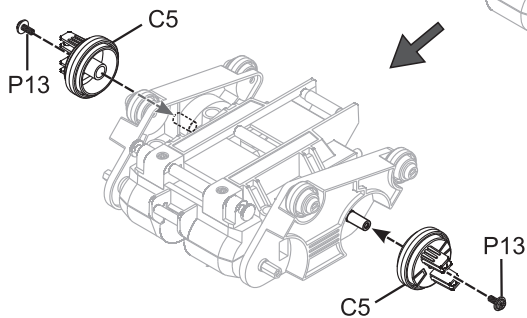
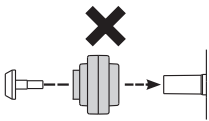
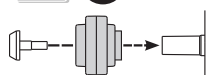
I-II



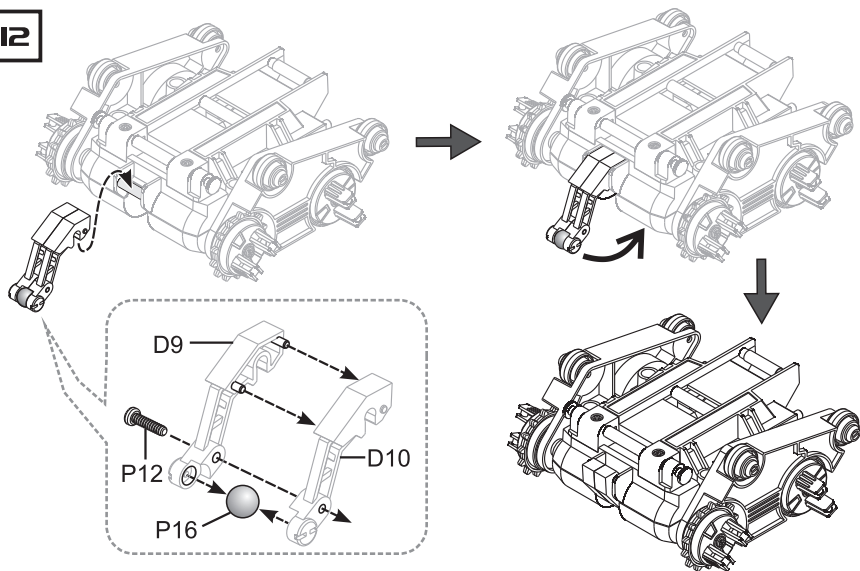
小技巧提醒：
請先用手將零件固定好，
再用十字起子鎖緊螺絲。



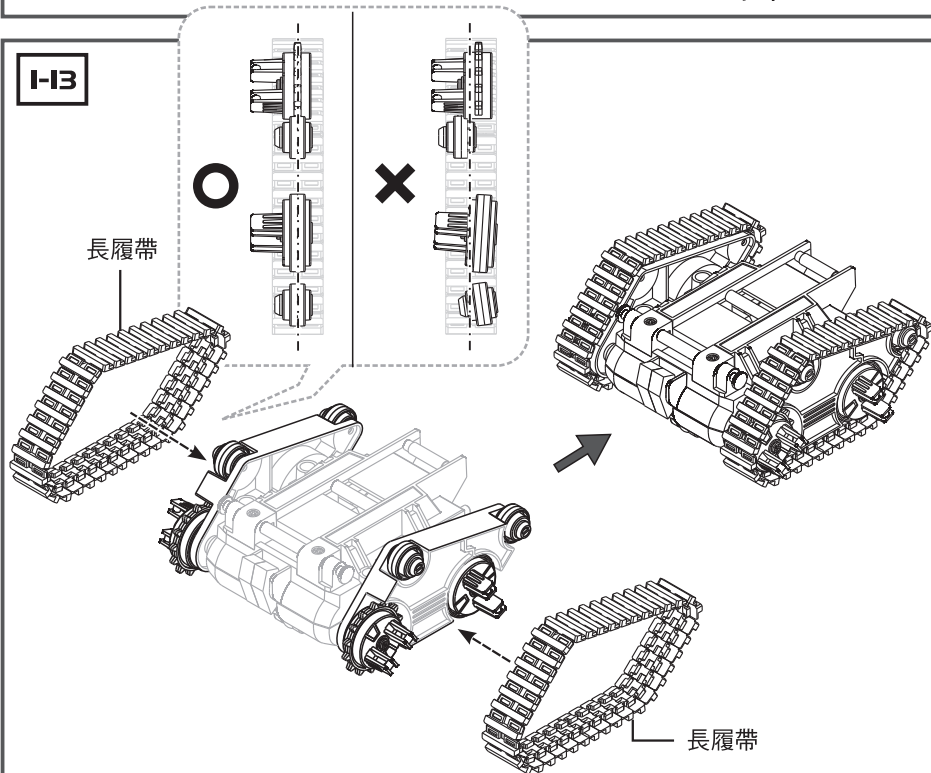
I-10



H2

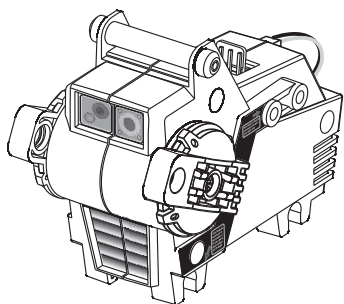


H3

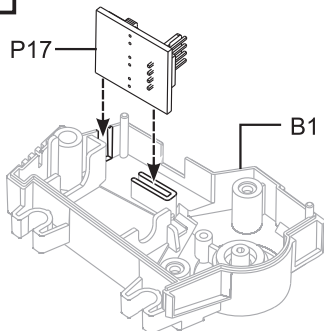


2

齒輪箱



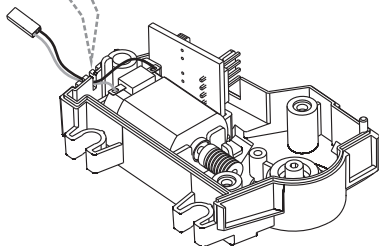
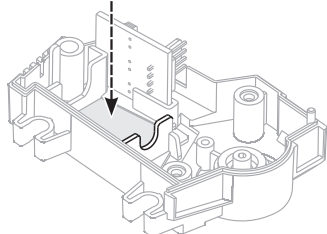
2-1



2-2

黑色
紅色

P2

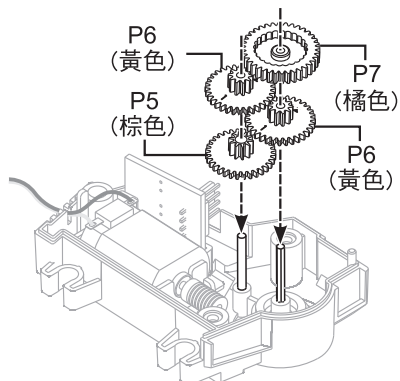
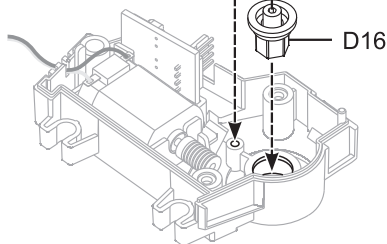


2-3

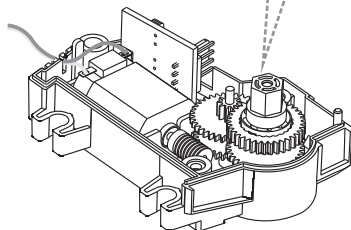
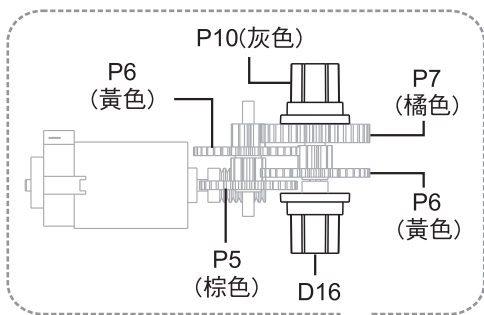
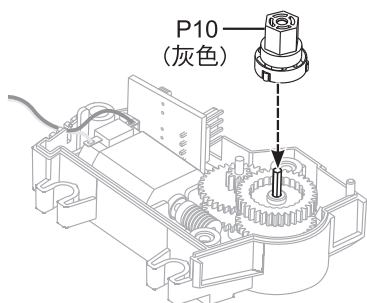
P15

P14

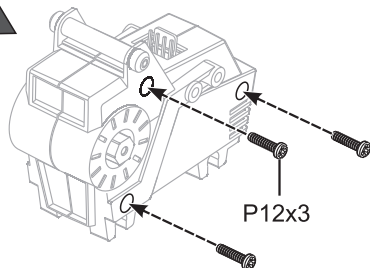
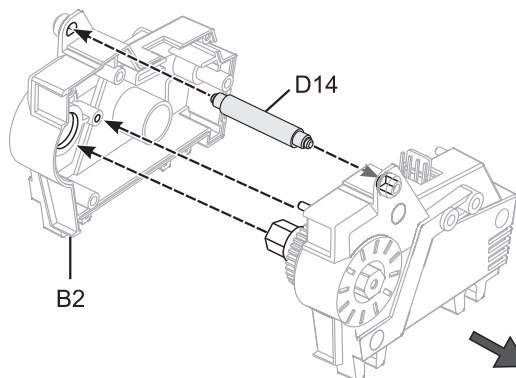
D16



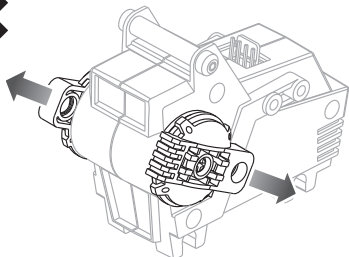
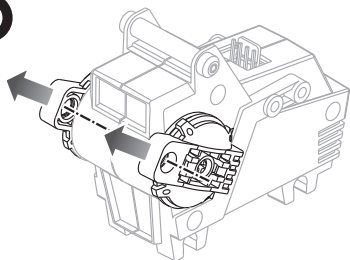
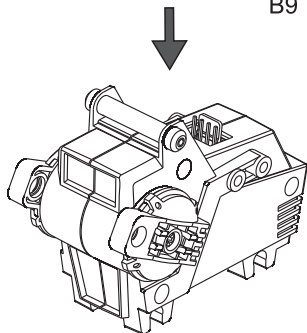
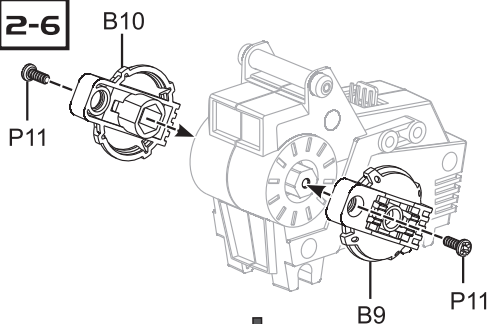
2-4



2-5

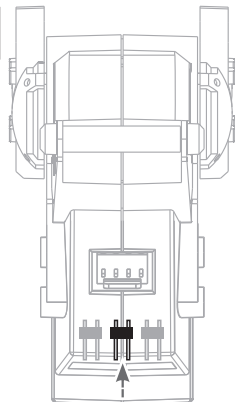


2-6

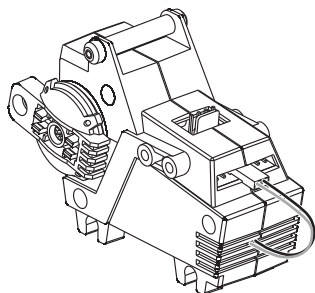


注意：B10及B9位置必須平行對應。

2-7

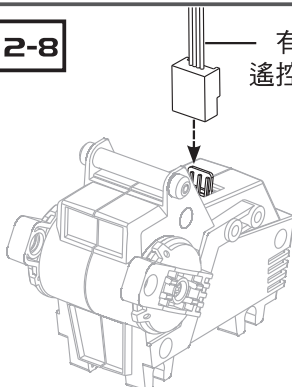


紅色 — 黑色



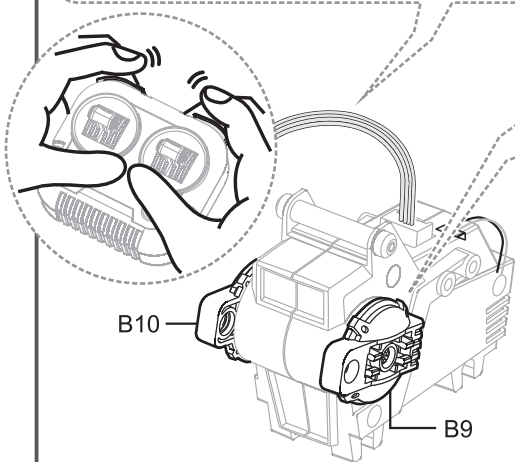
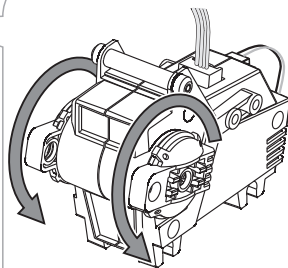
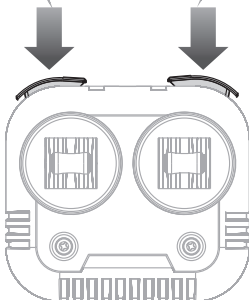
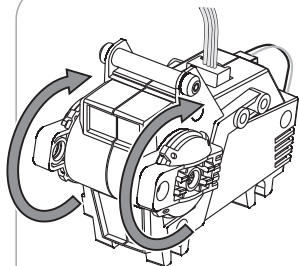
2-8

有線
遙控器

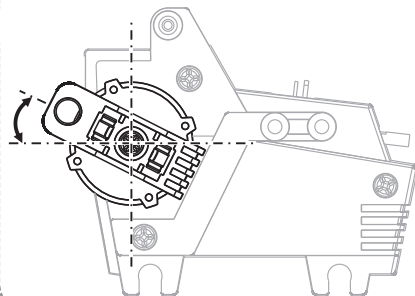


2-9

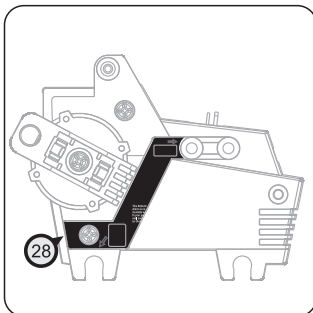
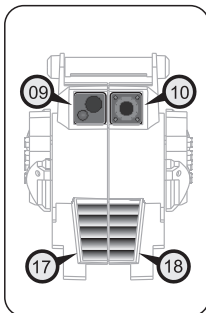
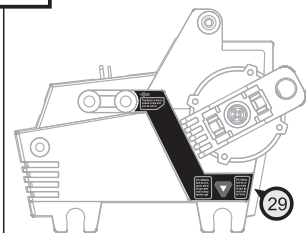
1 小技巧提醒：請操作看看動作是否順暢。



2 小技巧提醒：將B9及B10調整到如下圖所示位置。

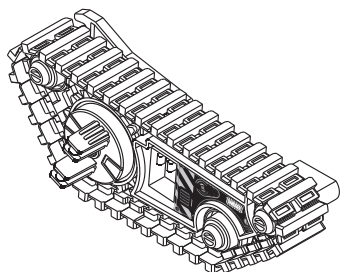


2-10

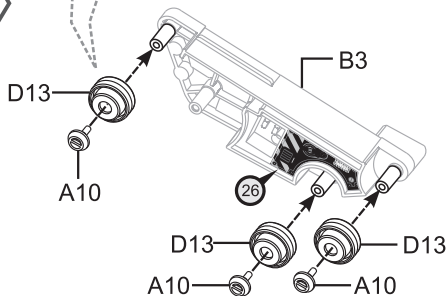
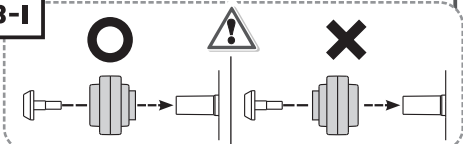


3

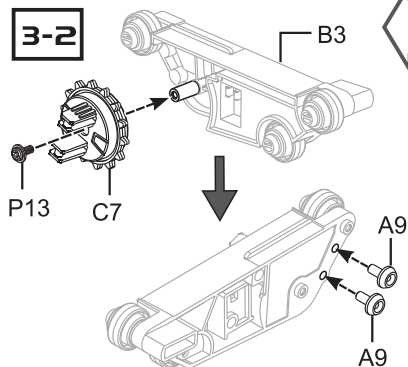
右前履帶組



3-1



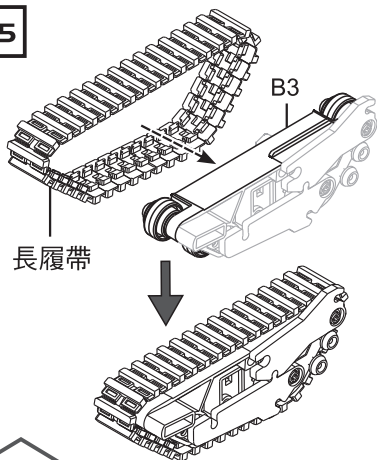
3-2



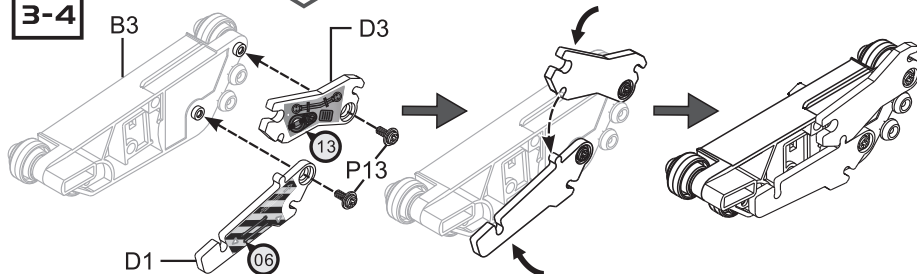
3-3



3-5

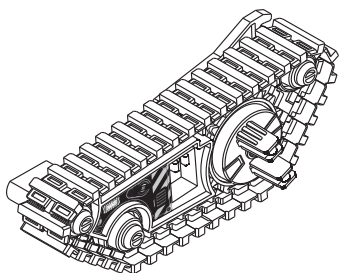


3-4

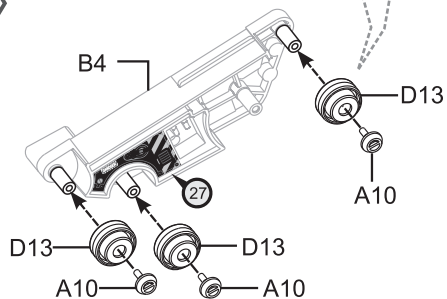
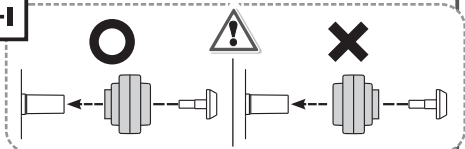


4

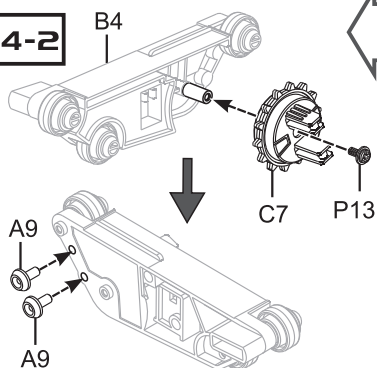
左前履帶組



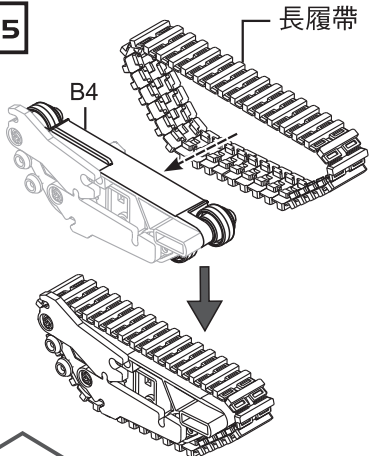
4-1



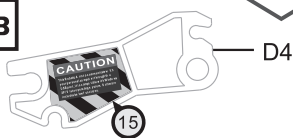
4-2



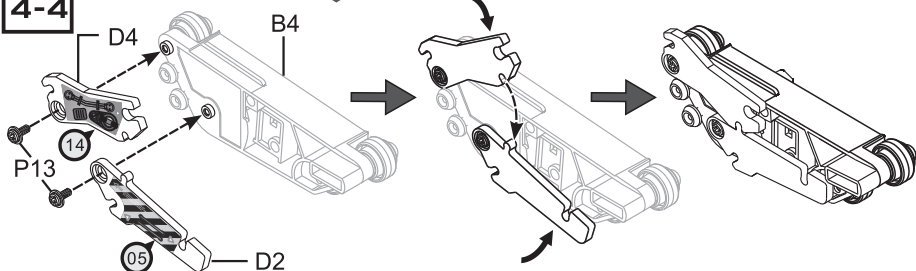
4-5



4-3

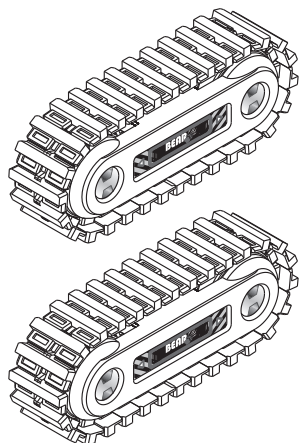


4-4

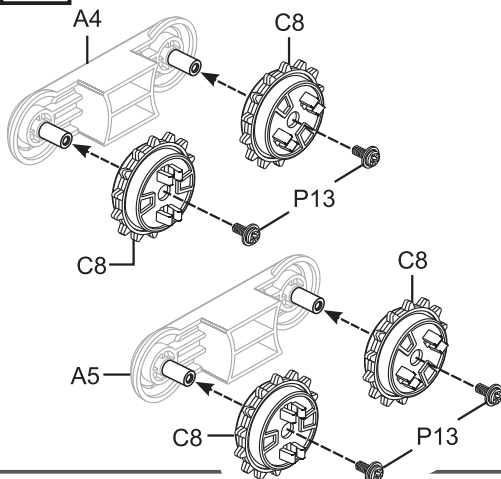


5

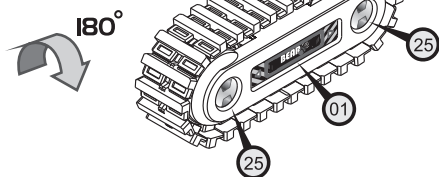
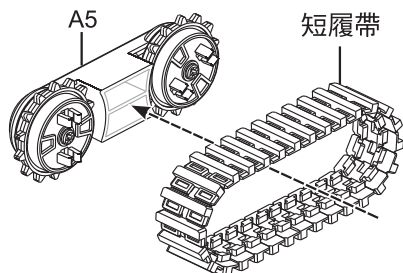
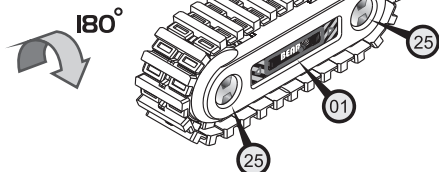
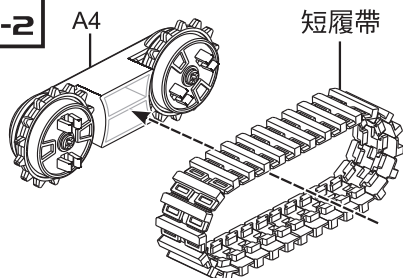
中間履帶組



5-1

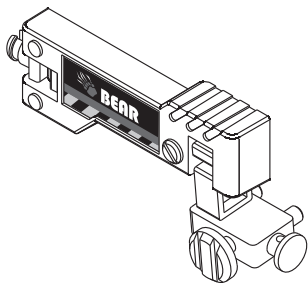


5-2

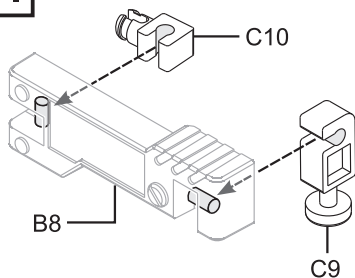


6

右臂模組

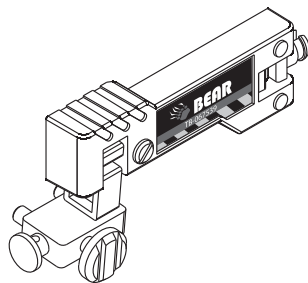


6-1

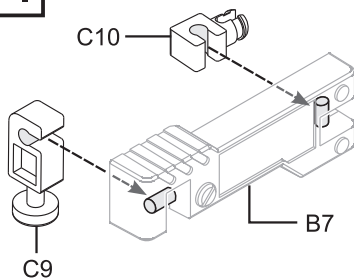


7

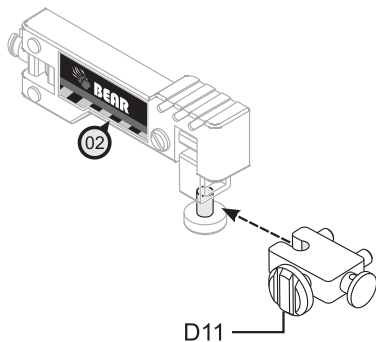
左臂模組



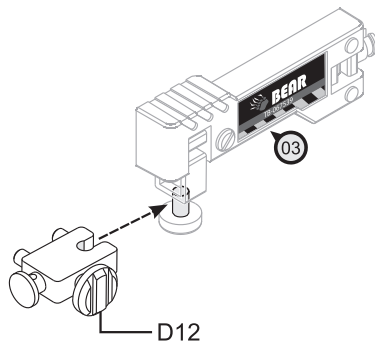
7-1



6-2

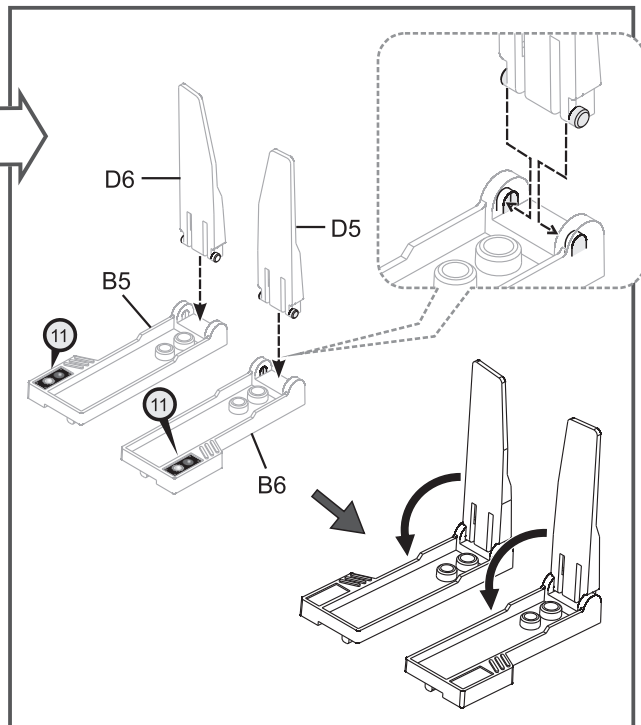
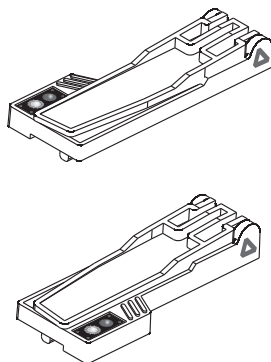


7-2



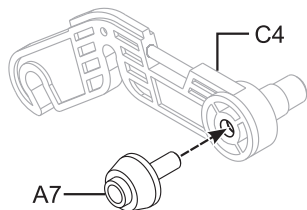
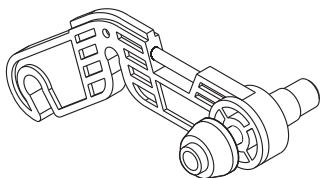
8

升降桅桿組



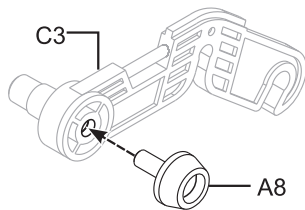
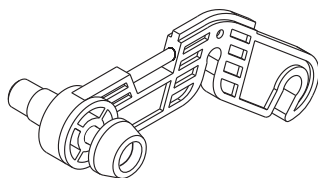
9

連接模組A

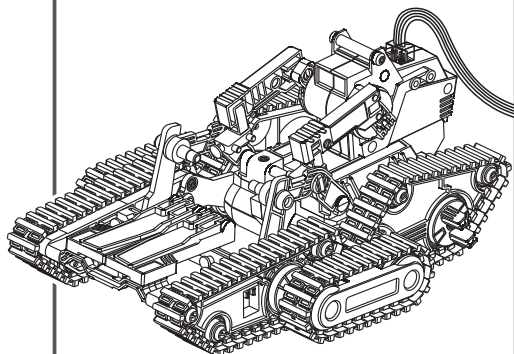


10

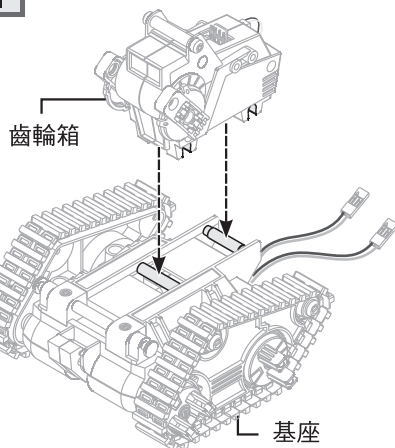
連接模組B



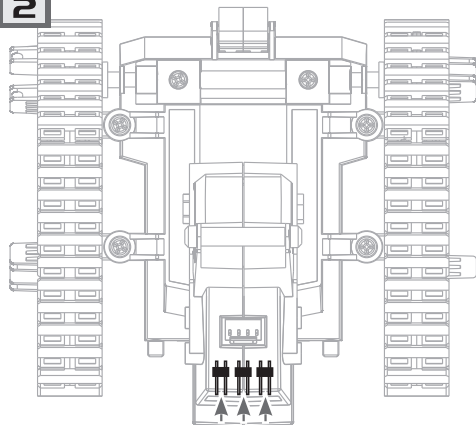
成品外觀



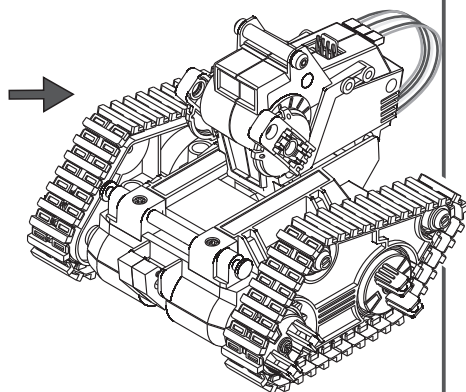
1



2



黃色 — 黑色
 黑色 — 黃色
 紅色 — 黑色

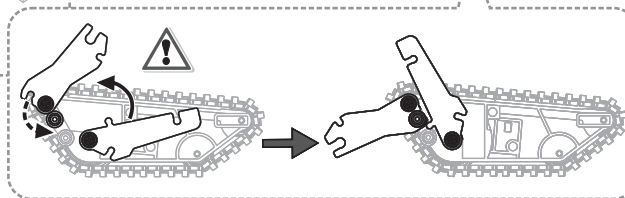
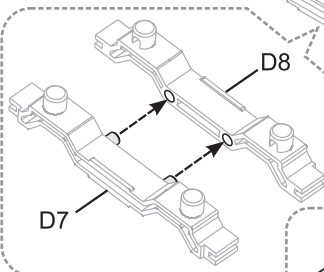
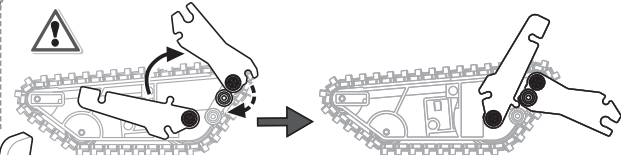


3

右前履帶組

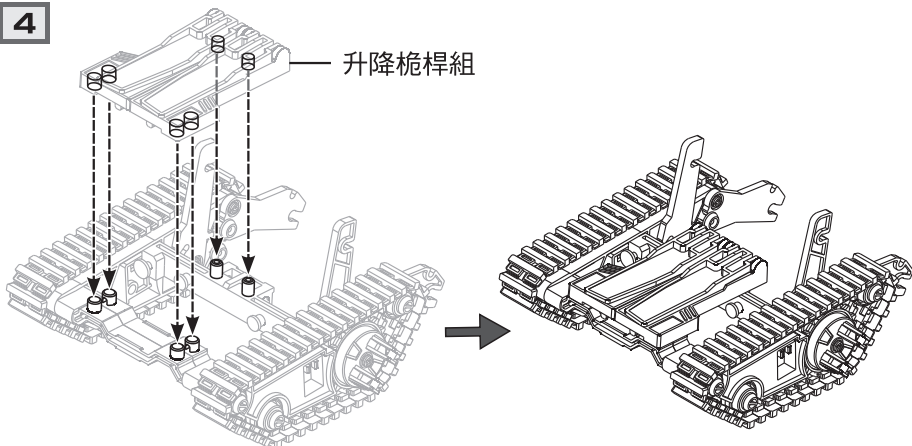
C2

左前履帶組

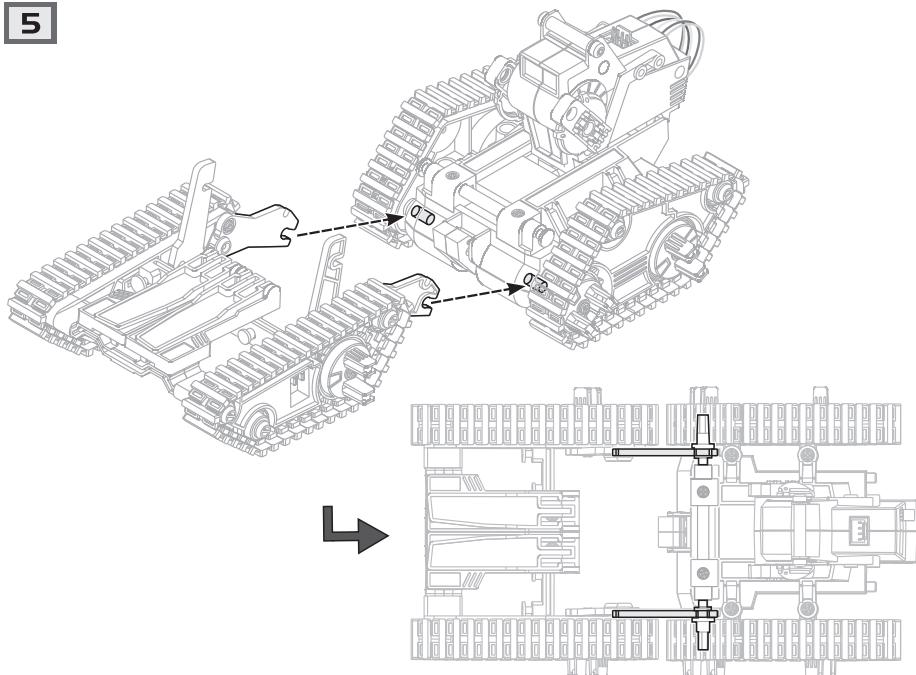


4

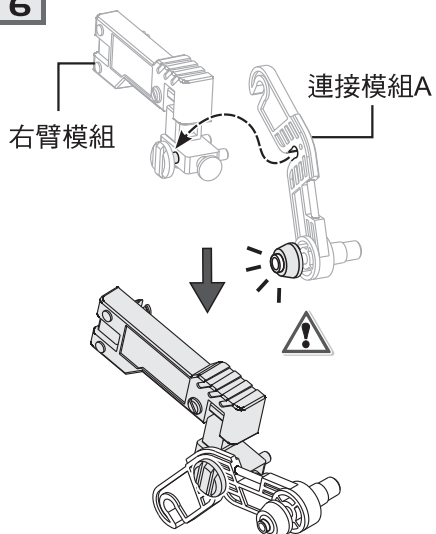
升降桅桿組



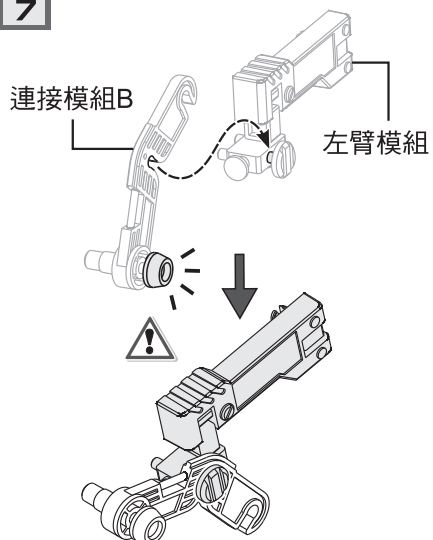
5



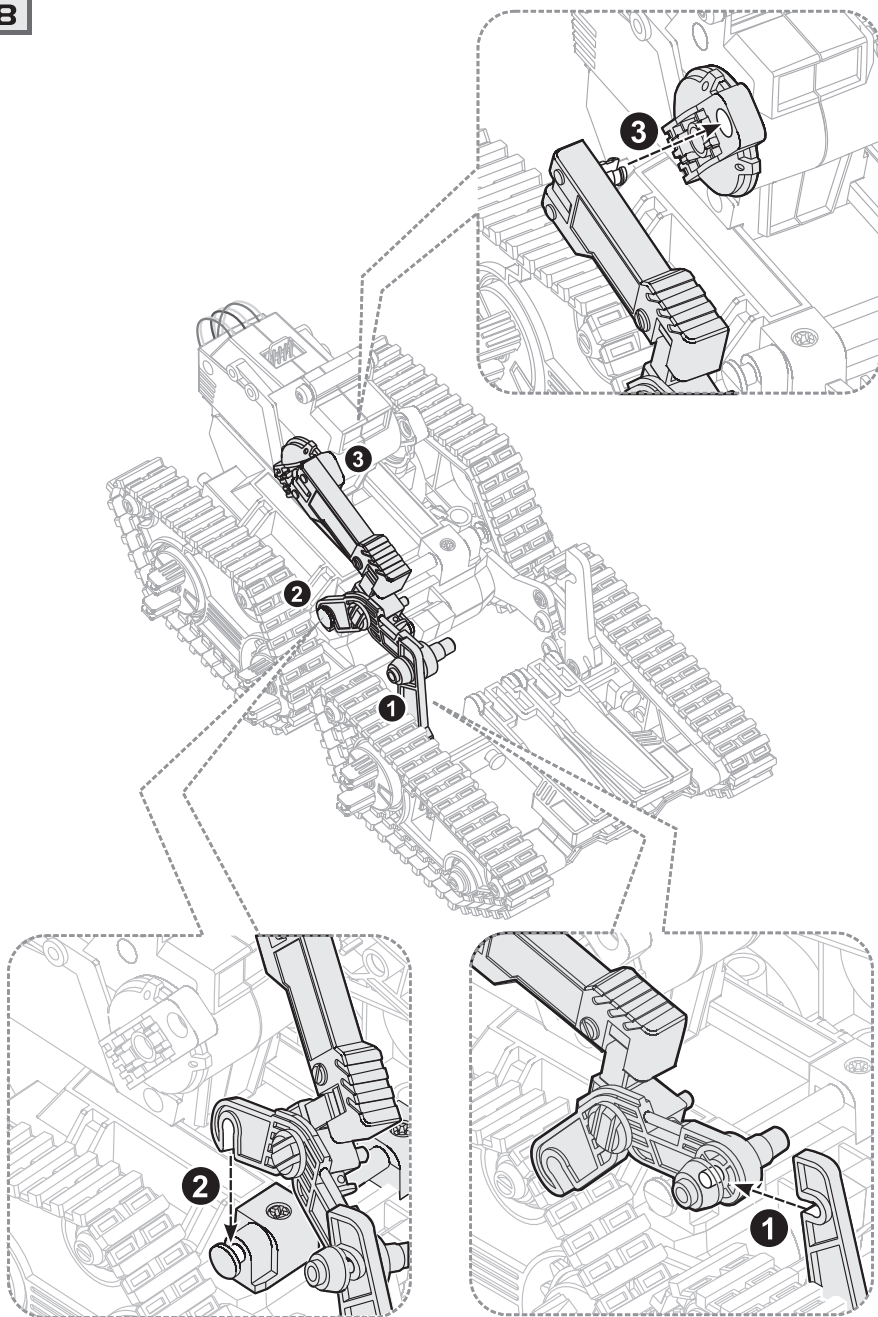
6



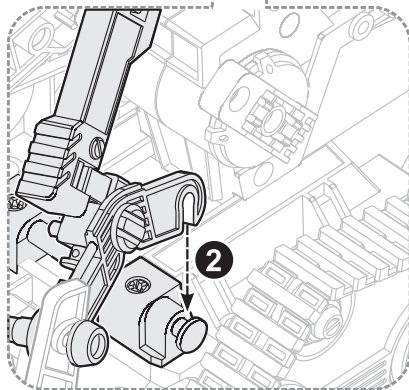
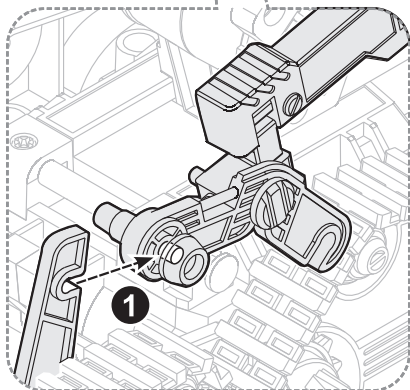
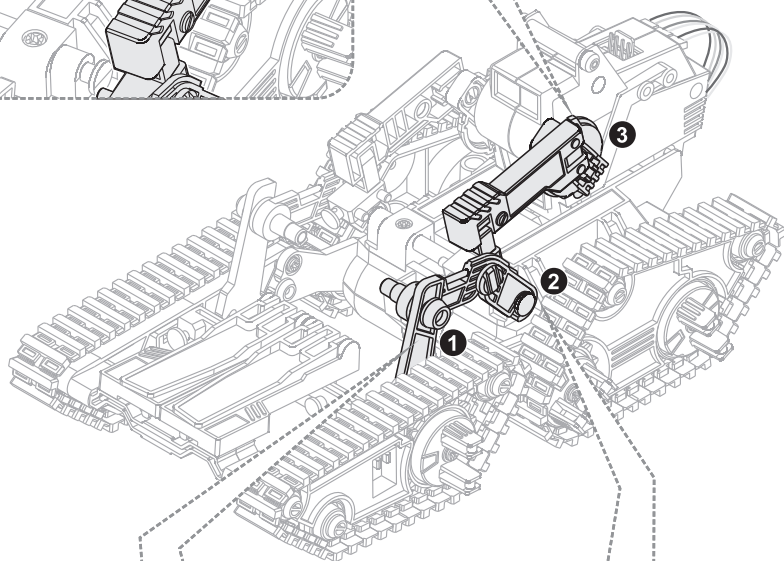
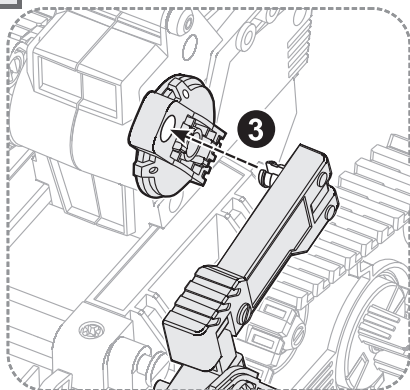
7



請勿將連接模組A及連接模組B裝反

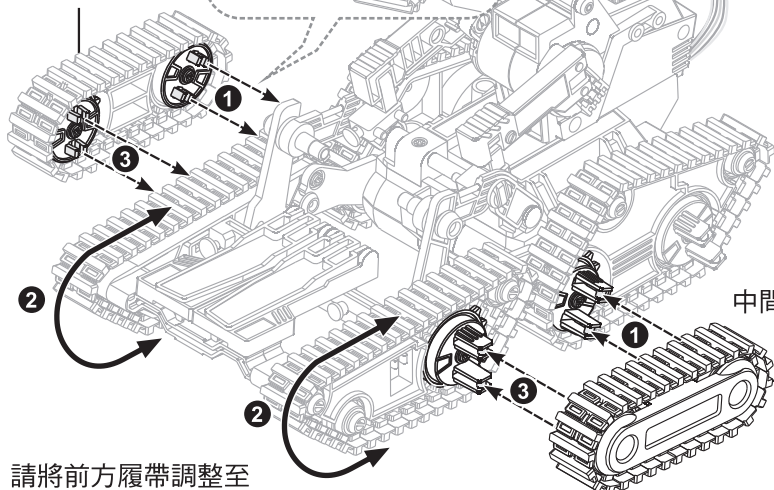


9



10

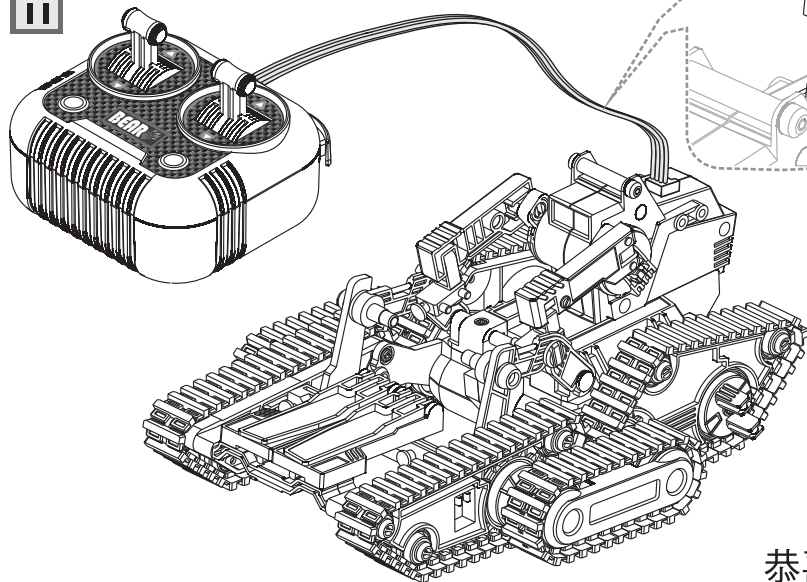
中間履帶組



中間履帶組

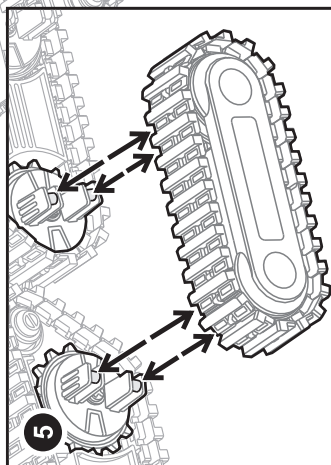
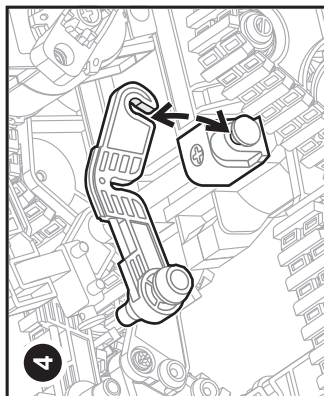
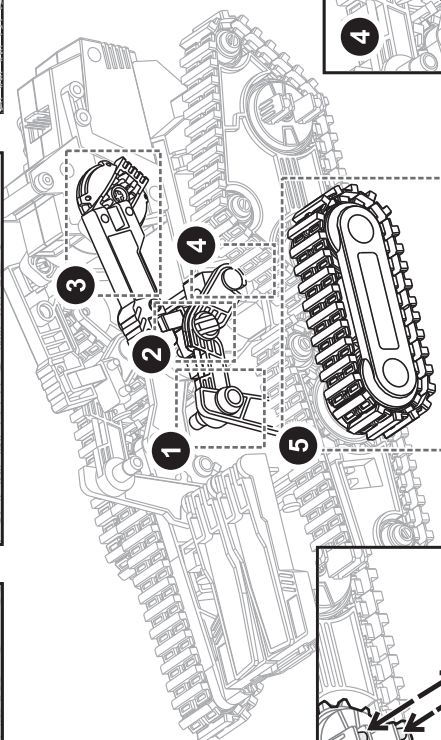
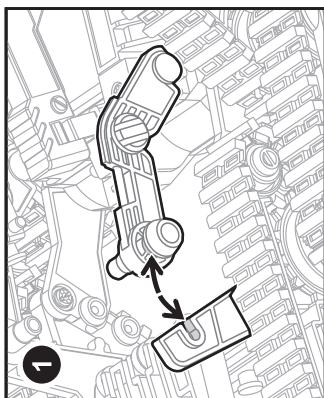
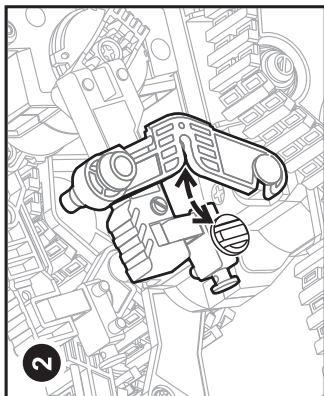
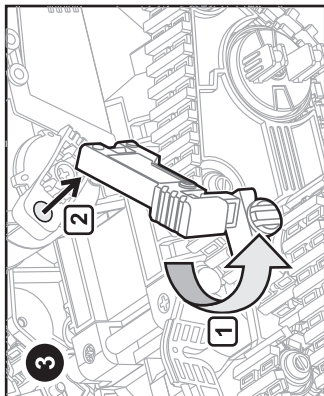
- ② 請將前方履帶調整至適當位置，以便組裝中間履帶組。

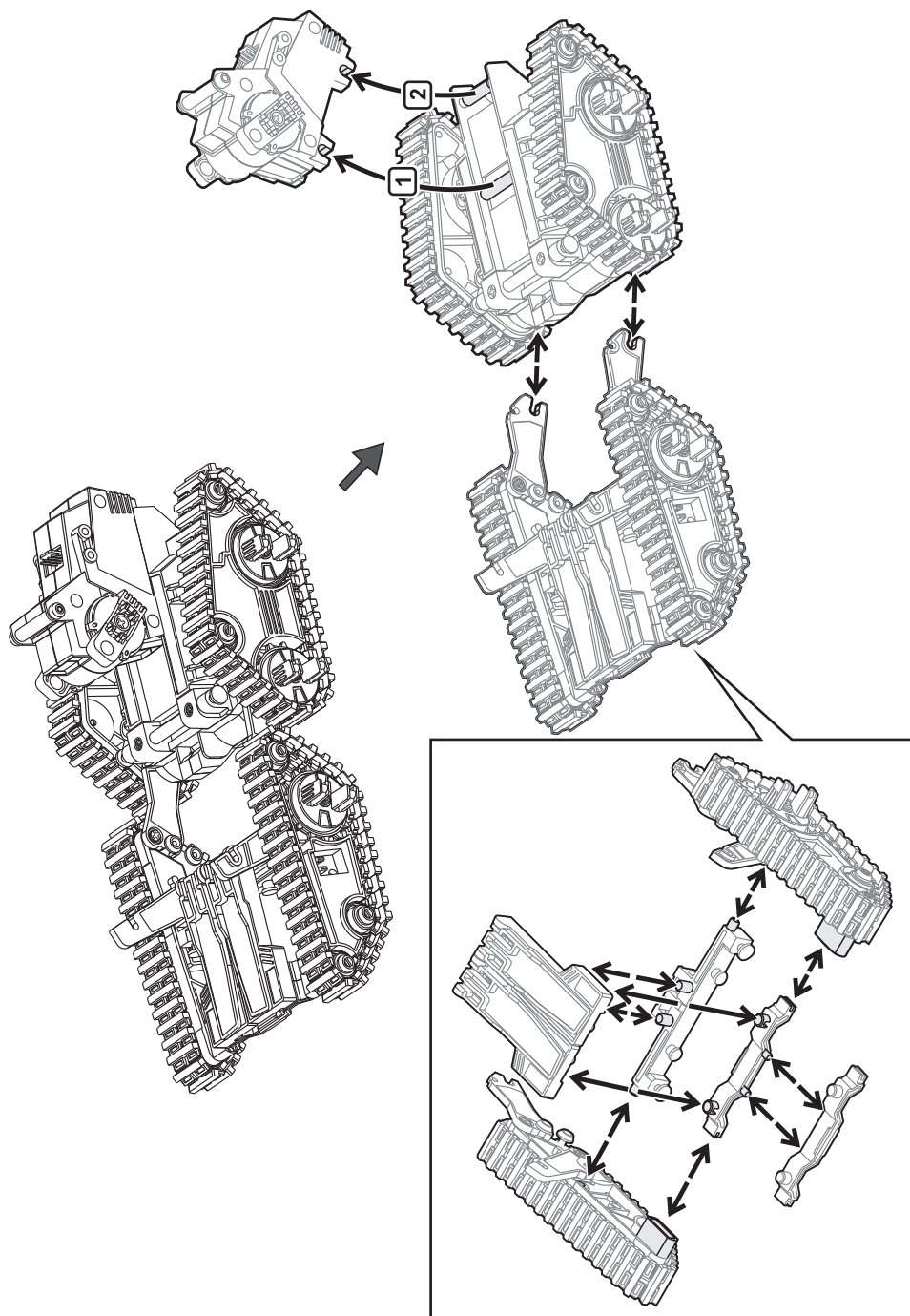
11



恭喜完成

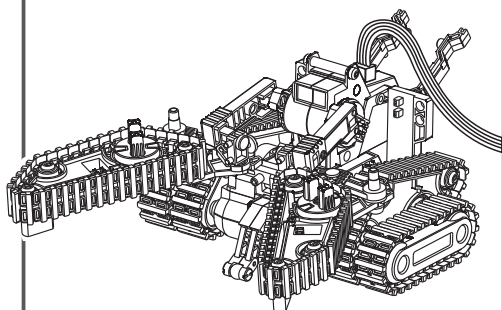
小技巧提醒：坦克車拆解方式



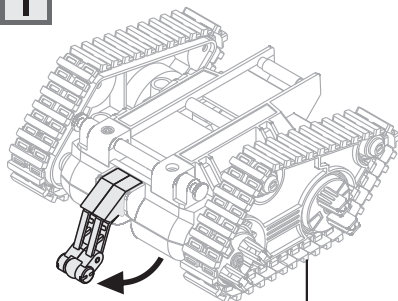


夾爪車組裝

成品外觀



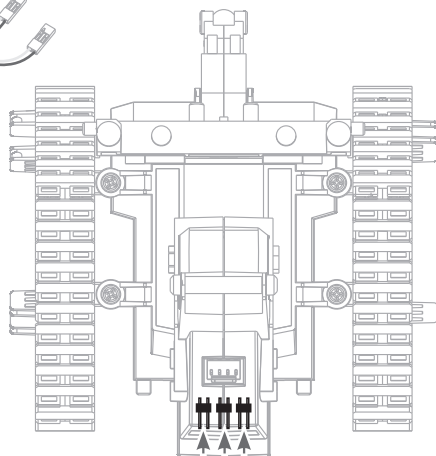
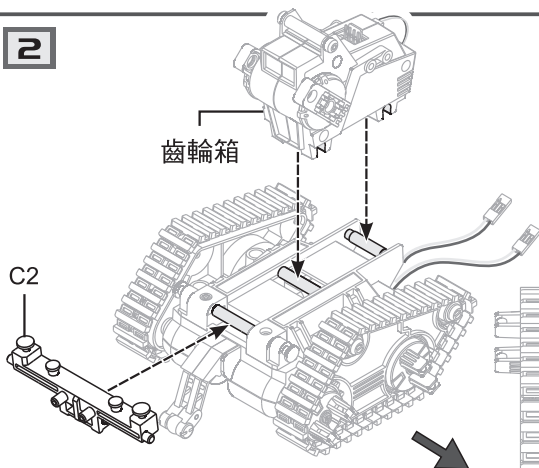
1



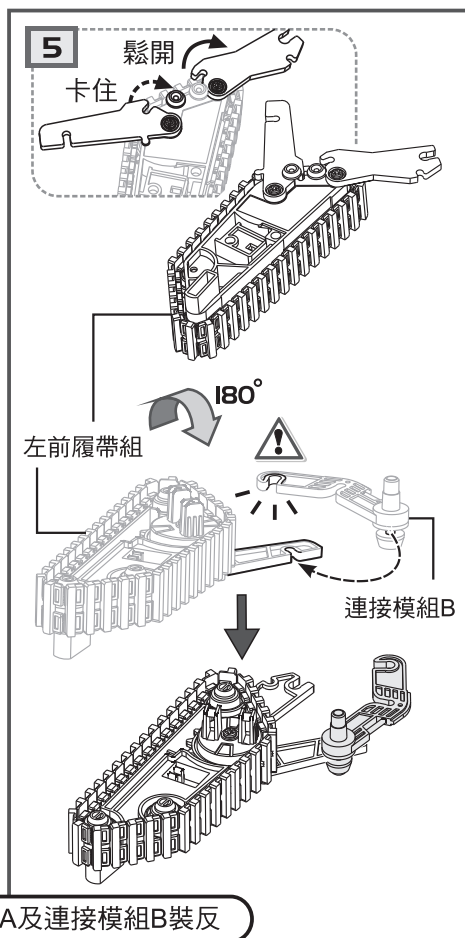
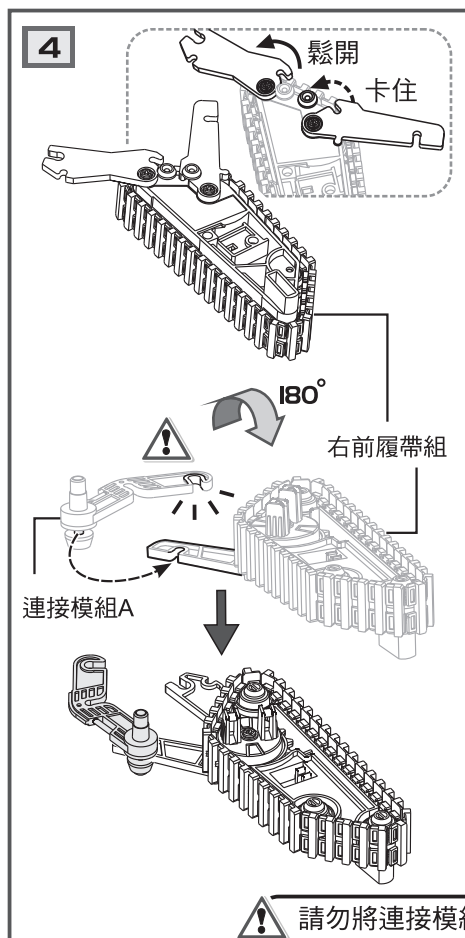
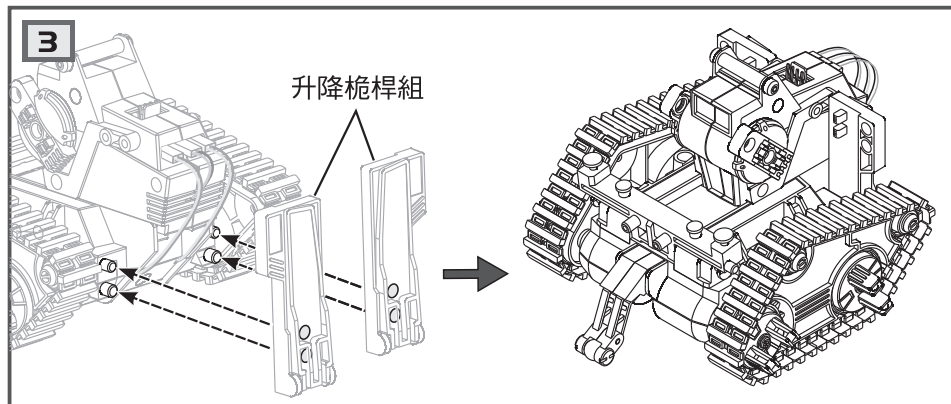
基座

2

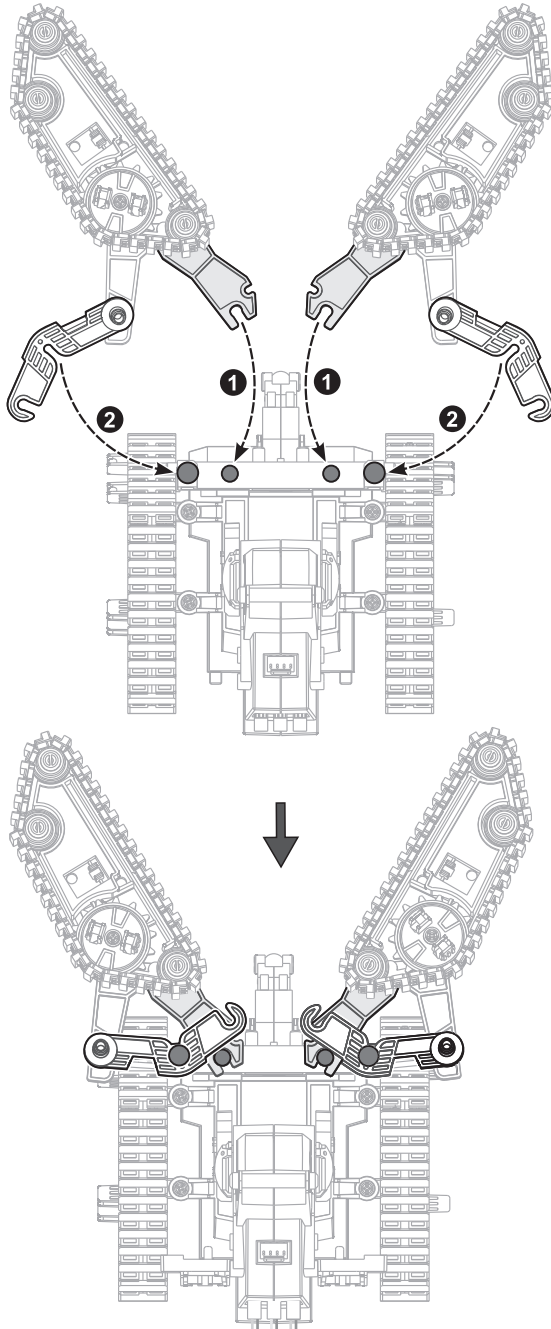
齒輪箱



黃色 — 黑色
黑色 — 黃色
紅色 — 黑色

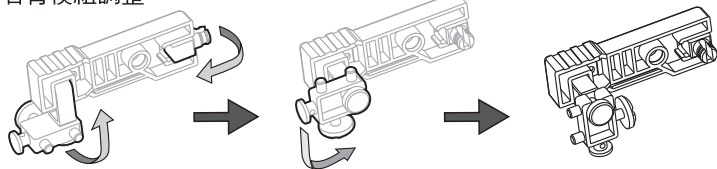


6

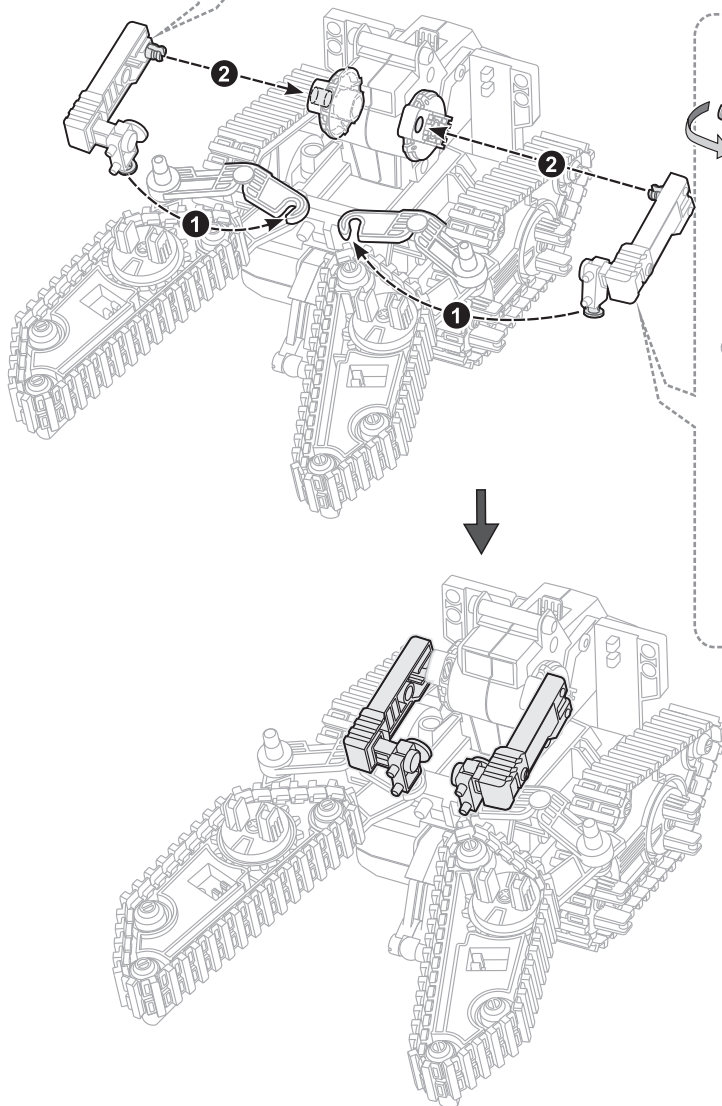
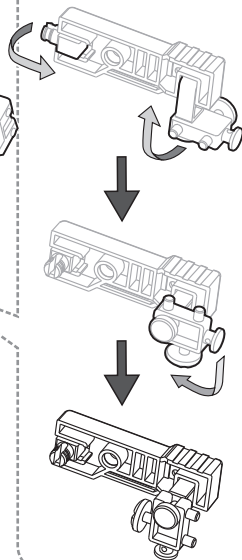


7

右臂模組調整



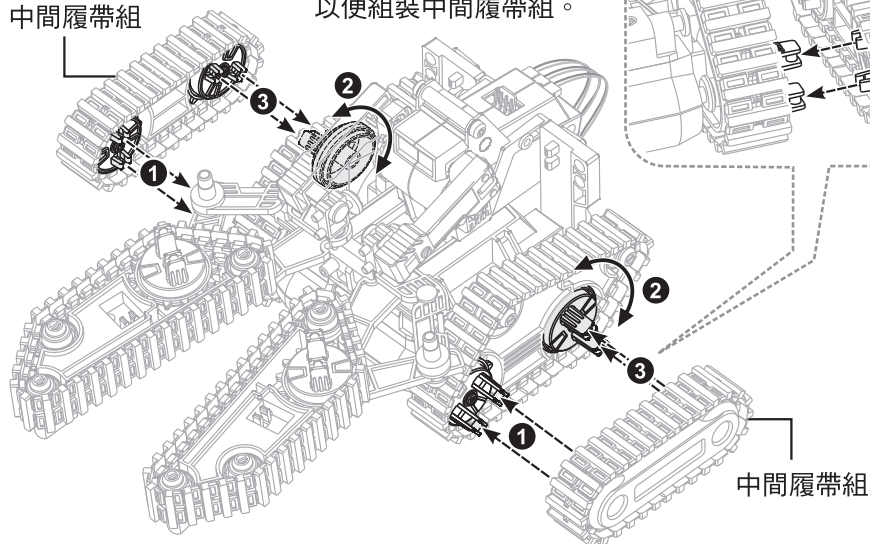
左臂模組調整



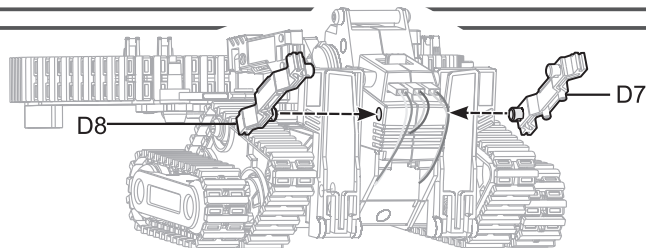
8

中間履帶組

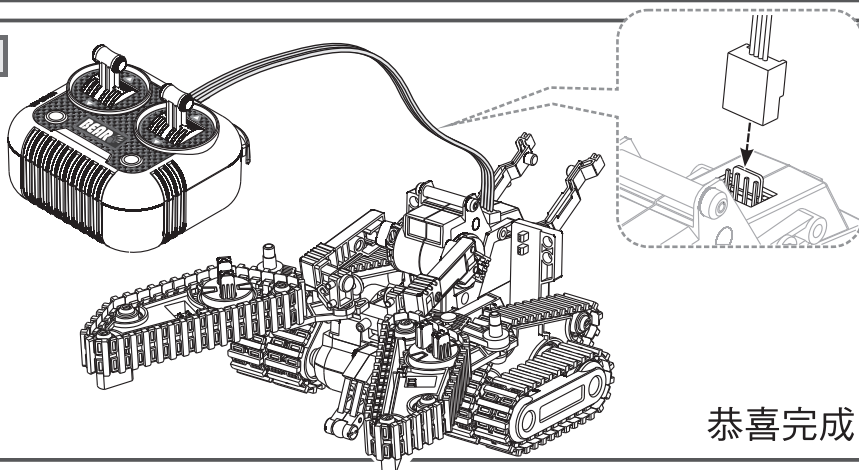
2 請調整車輪至適當位置
以便組裝中間履帶組。



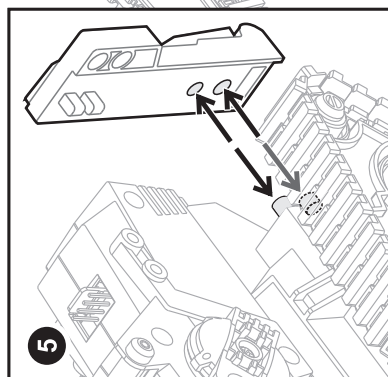
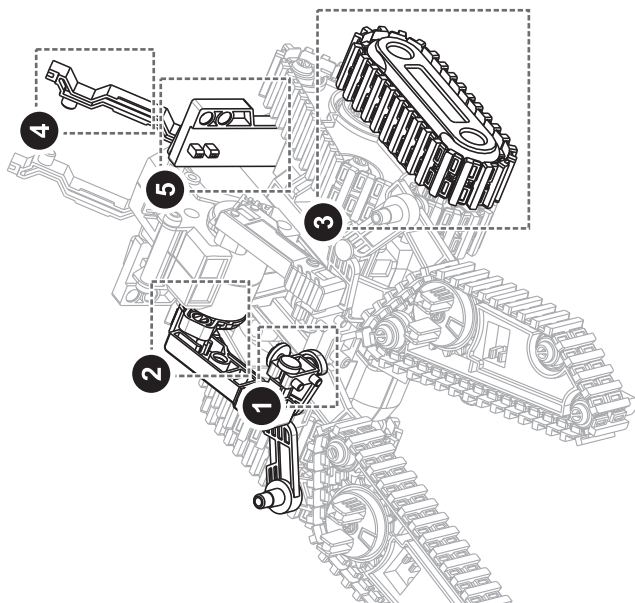
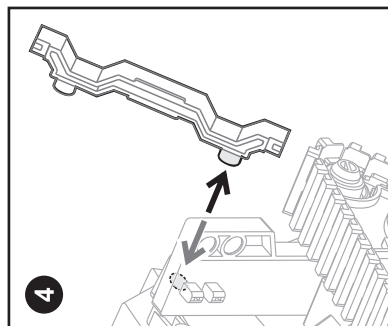
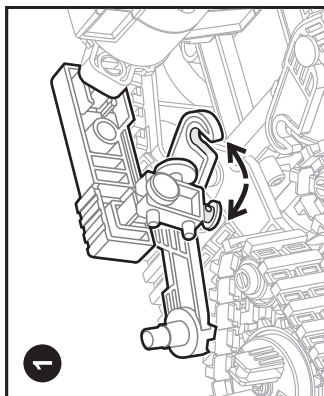
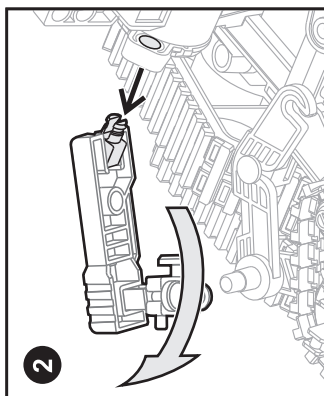
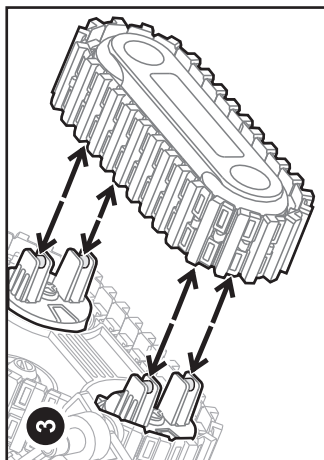
9

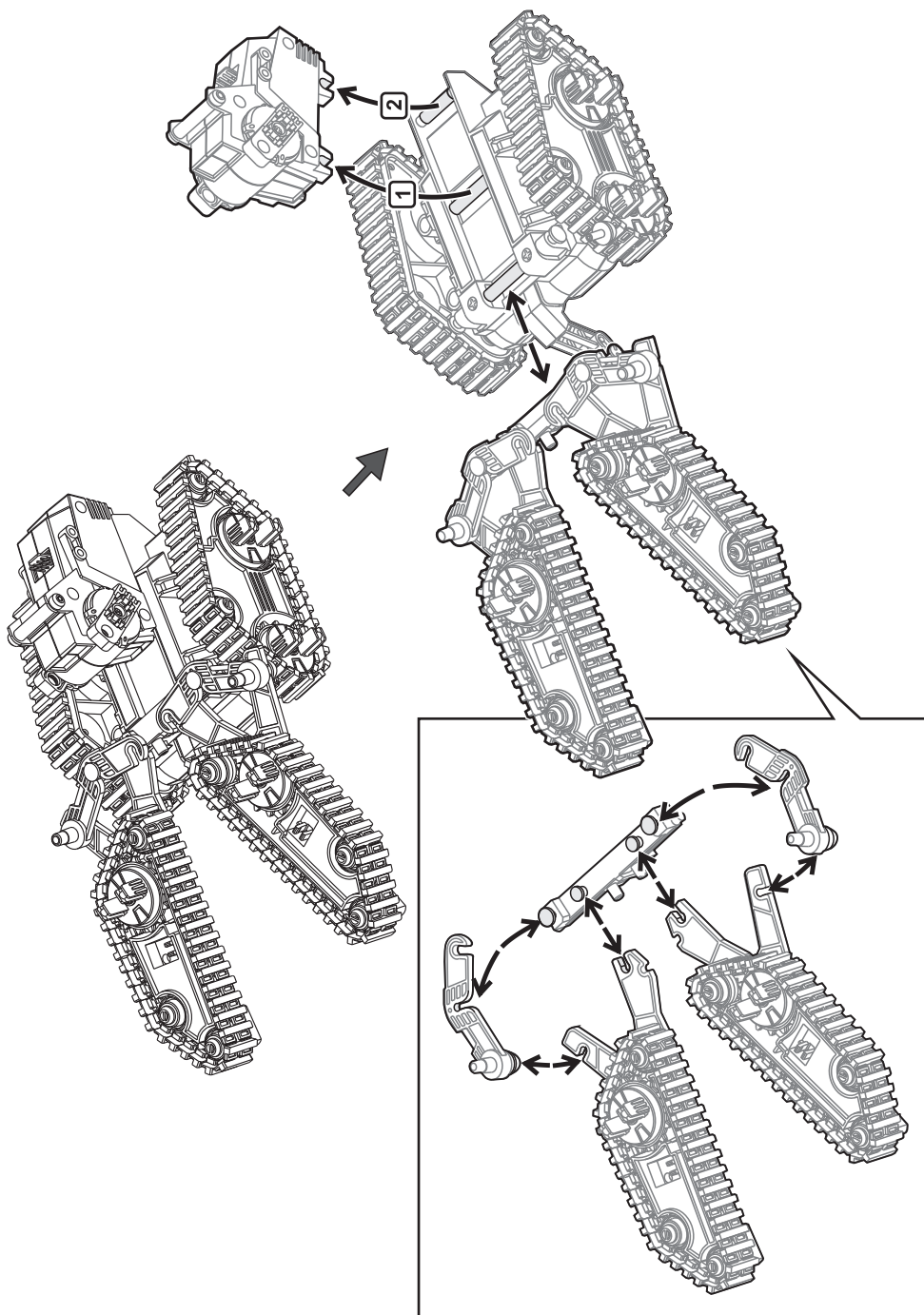


10

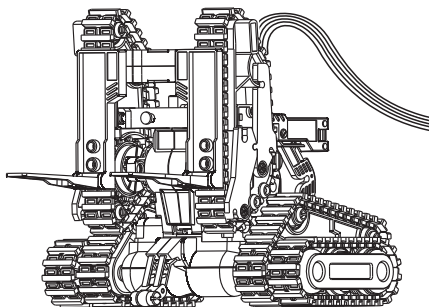


小技巧提醒: 夾爪車拆解方式



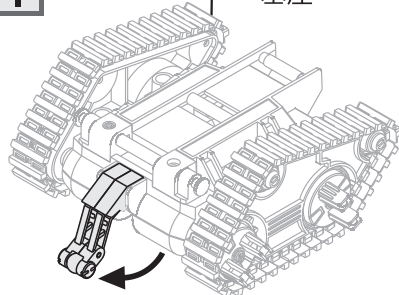


成品外觀



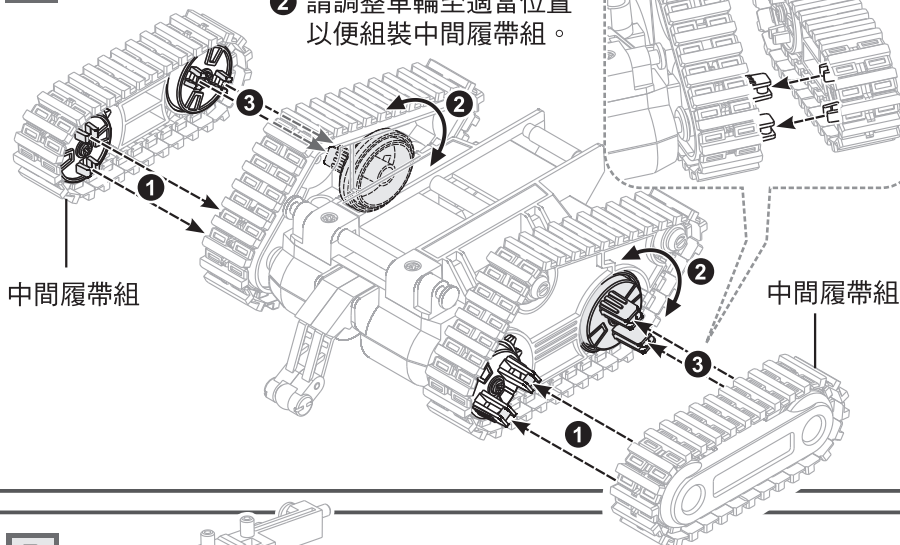
I

基座



2

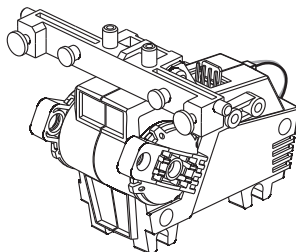
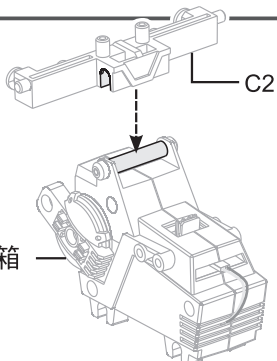
② 請調整車輪至適當位置
以便組裝中間履帶組。

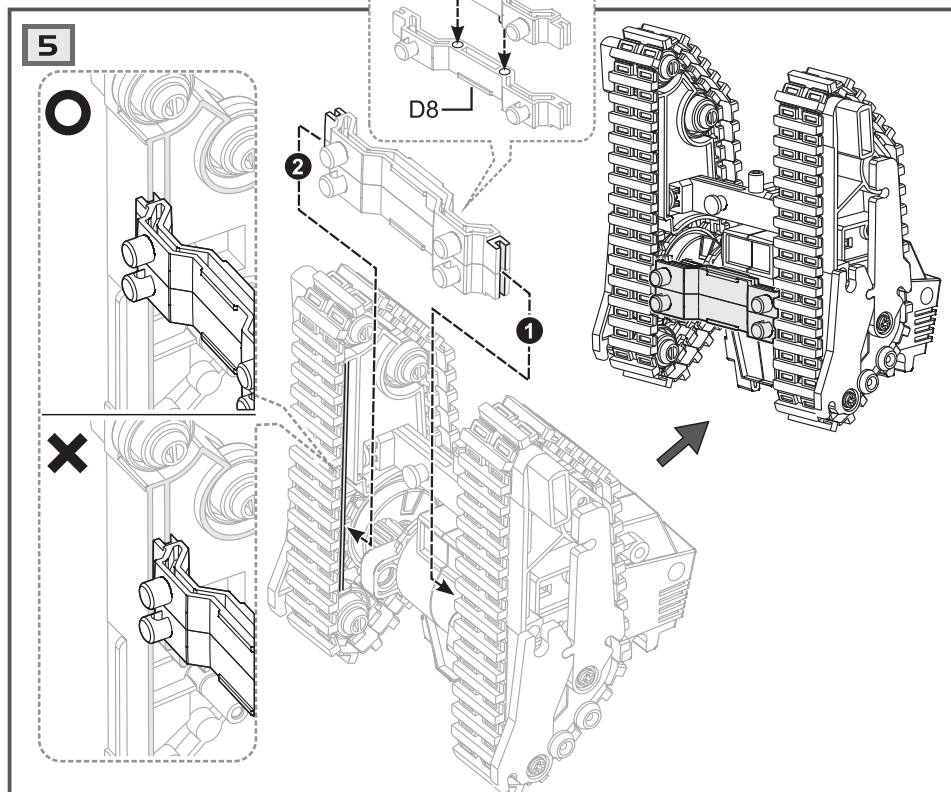
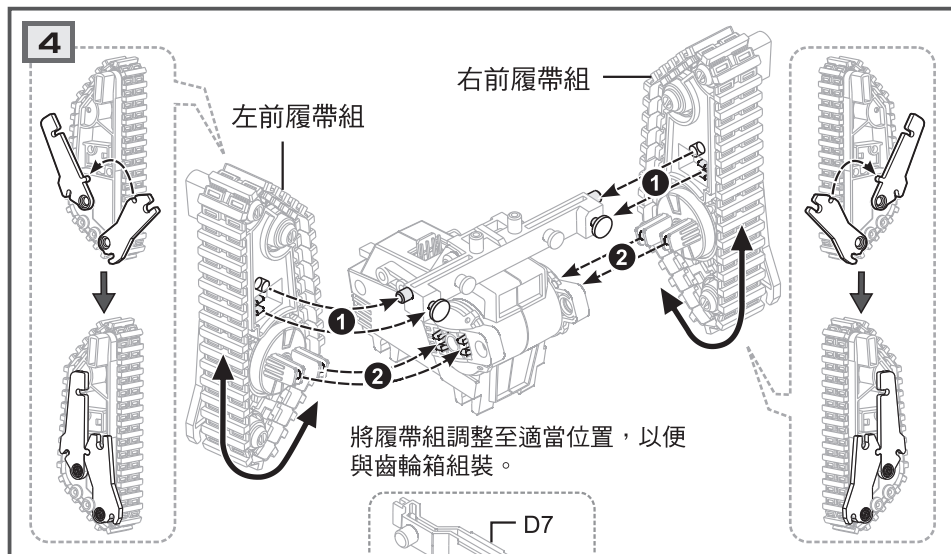


3

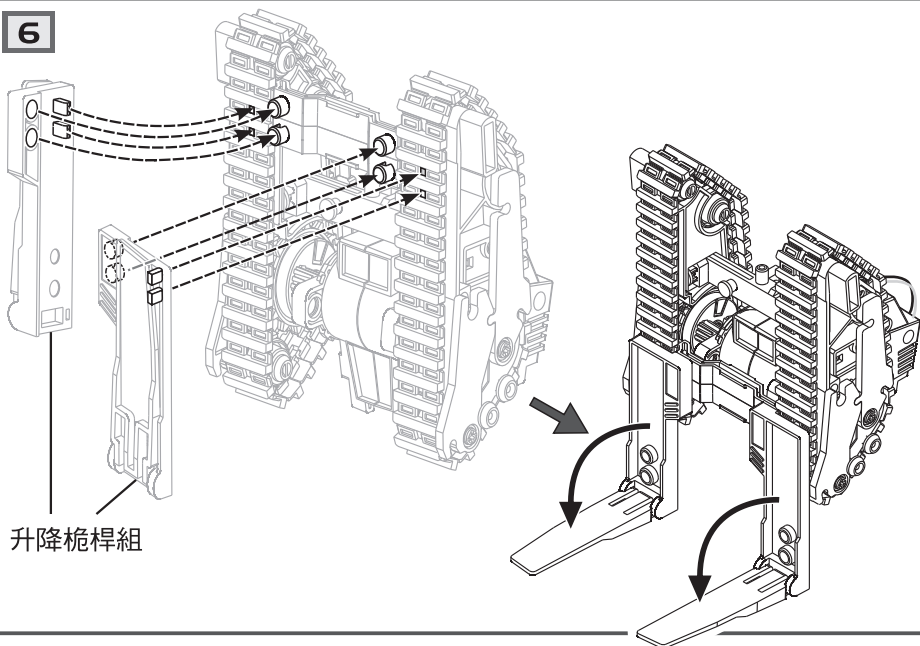
C2

齒輪箱

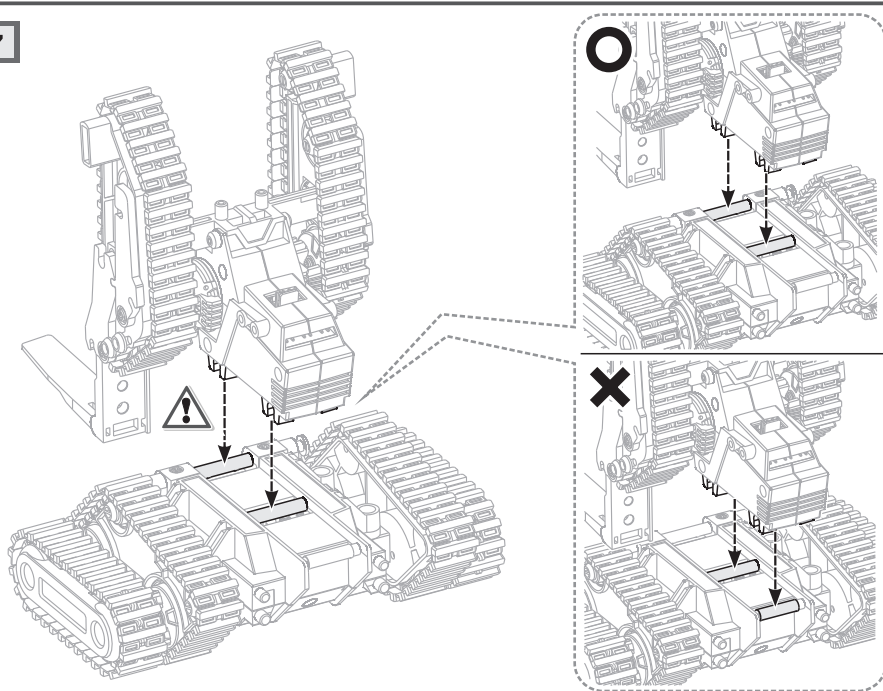




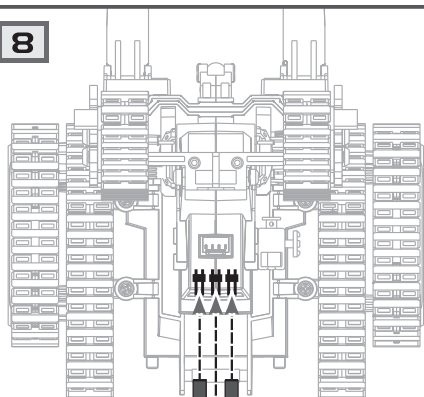
6



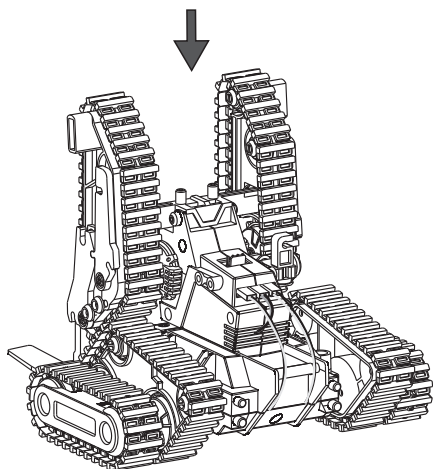
7



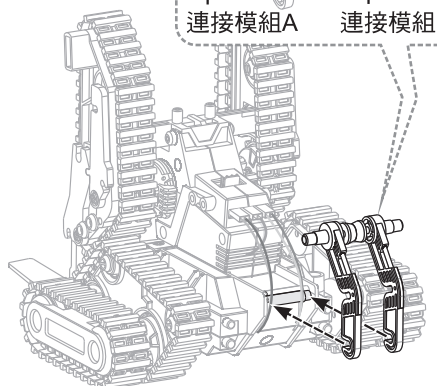
8



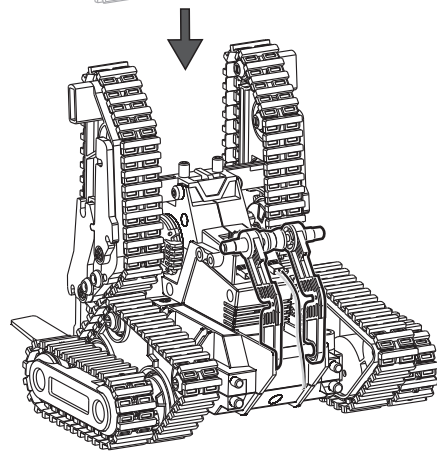
黃色 黑色
黑色 黃色
紅色 黑色



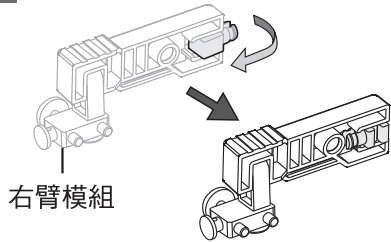
9



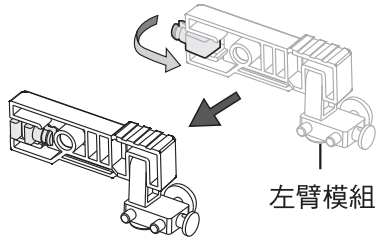
連接模組A 連接模組B



10 左右臂模組調整



右臂模組

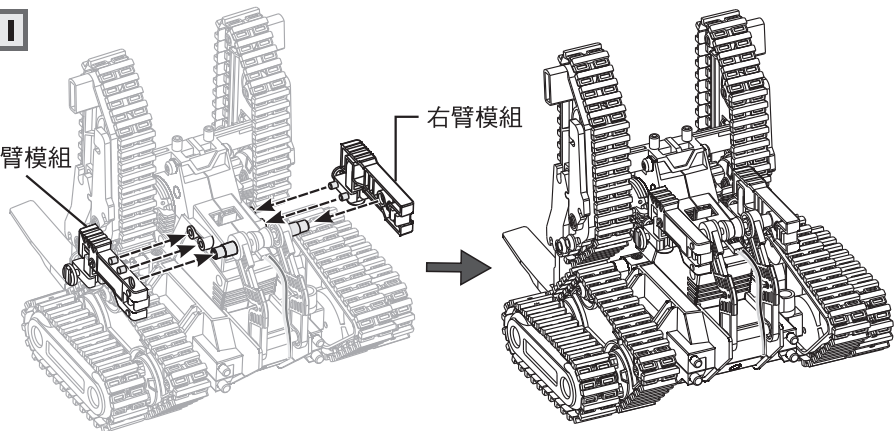


左臂模組

11

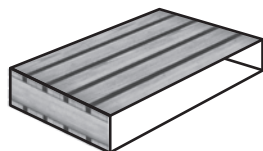
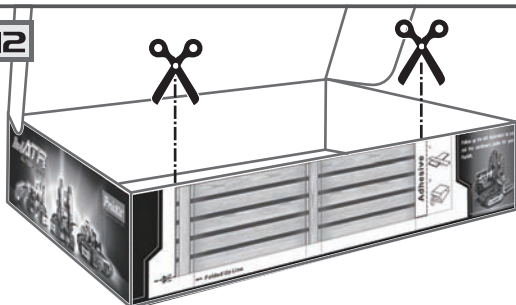
左臂模組

右臂模組



12

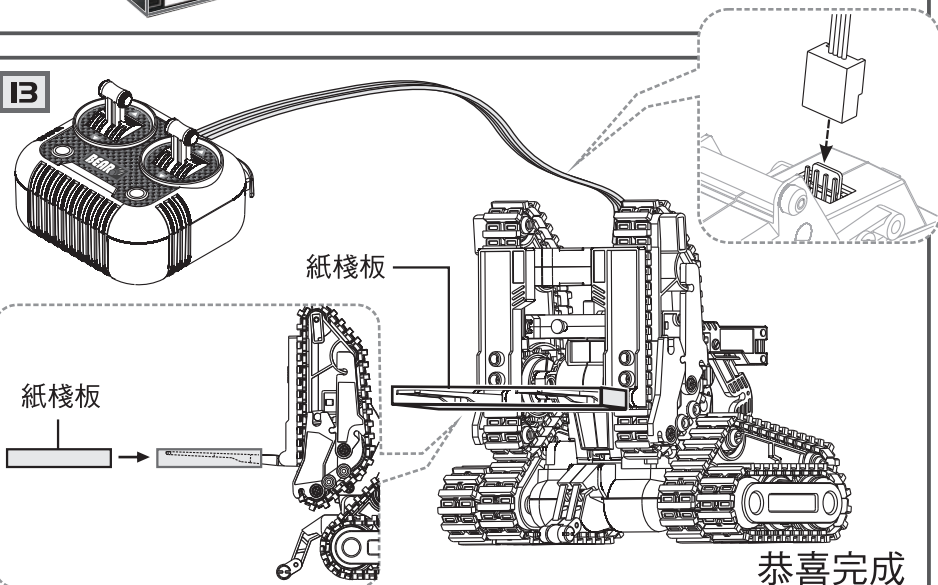
剪下彩盒上的紙棧板，
搭配推高機使用。



13

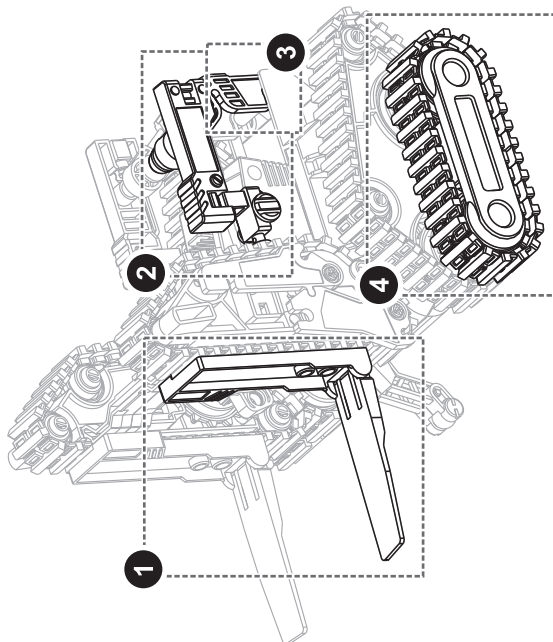
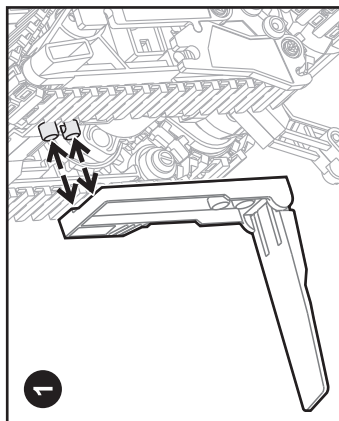
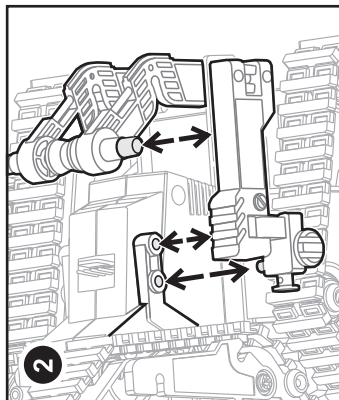
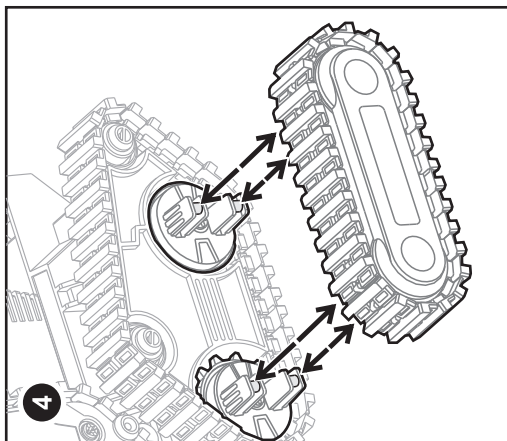
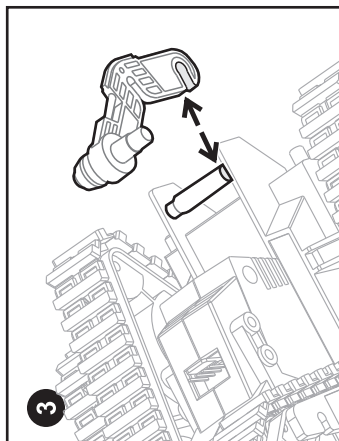
紙棧板

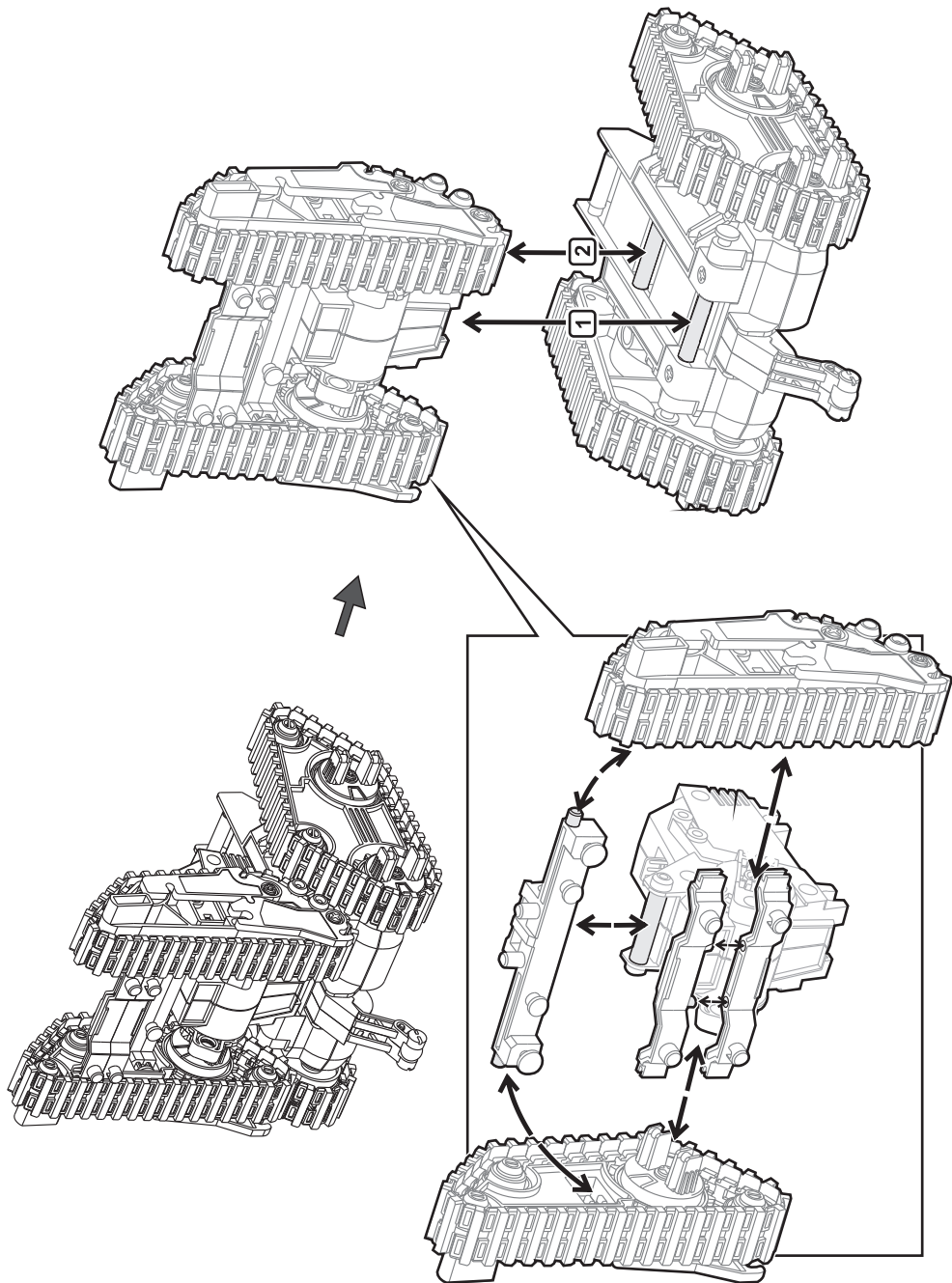
紙棧板



恭喜完成

小技巧提醒: 推高機拆解方式

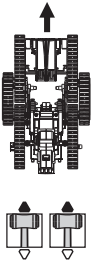
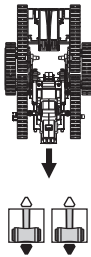
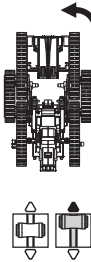

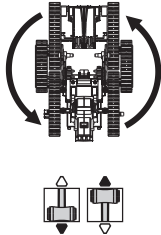
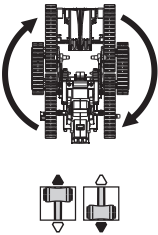
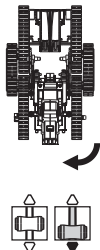
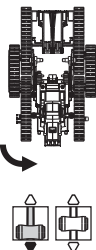
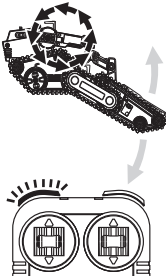
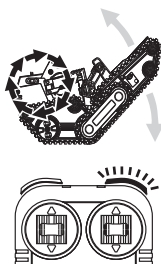




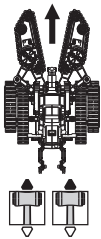
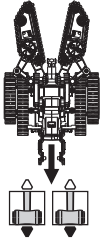
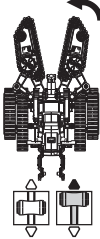
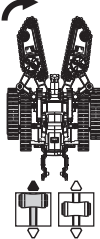
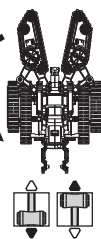
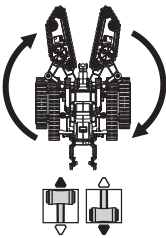
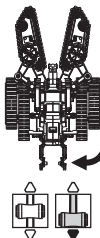
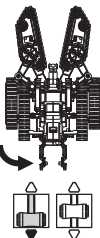
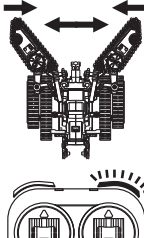
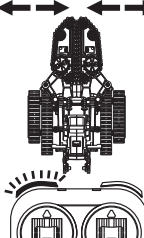
操作方式

1. 推動有線遙控器上的任意操縱桿開始操作。
2. 每款車型有以下10種不同動作。

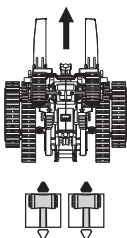
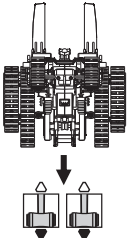

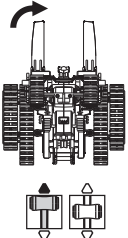
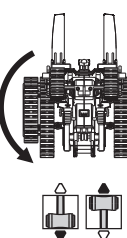
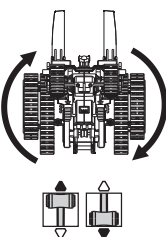
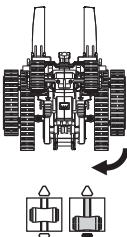
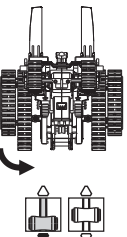
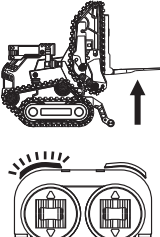
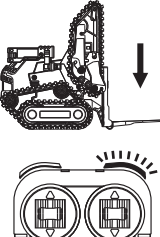
坦克車模式

前進	後退	左轉	右轉	向左轉360度
				
向右轉360度	倒退向左轉	倒退向右轉	前端履帶 向上↺向下	前端履帶 向下↺向上
				

夾爪車模式

前進	後退	左轉	右轉	向左轉360度
				
向右轉360度	倒退向左轉	倒退向右轉	夾爪 打開↺閉合	夾爪 閉合↻打開
				

推高機模式

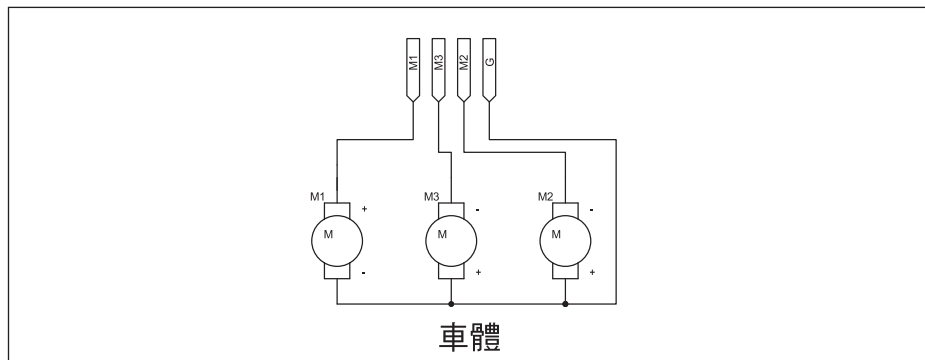
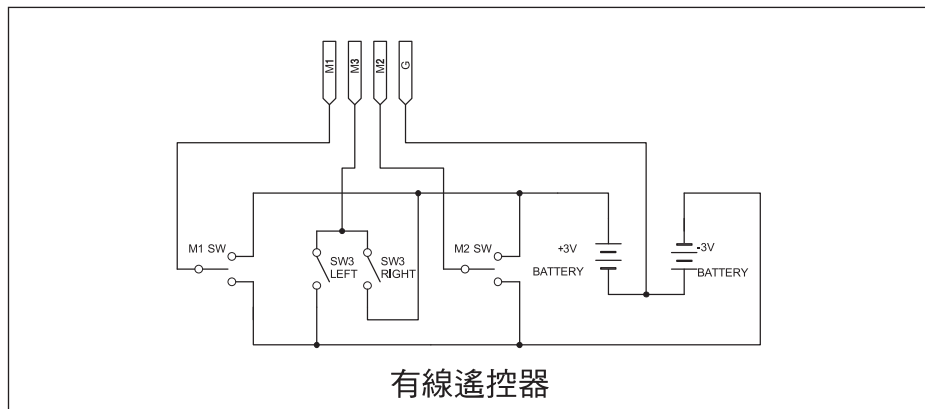
前進	後退	左轉	右轉	向左轉360度
				
向右轉360度	倒退向左轉	倒退向右轉	升高	降低
				

- 齒輪箱配有安全裝置，當玩家將操縱桿推至最大動力輸出時，齒輪箱會發出"答答"警示聲提醒。
- 為了延長齒輪箱使用壽命，當聽到"答答"警示聲時請立刻放開按鍵或操縱桿。

簡易故障排除

- 請確認所有接線方式是否正確 (請參考第25、33及43頁)
- 若連接線方向正確仍無法操作，請確認電池是否裝反，請參考第2頁。
同時確認電池盒P3接線是否正確插入電路板P4，請參考第4頁。
- 如果車體未按照正確方向移動，請參考第25、33及43頁檢查接線方式是否正確。

電路圖



若需要購買零件，請參照以下零件表

1. 請留下訂購人姓名、寄送地址、連絡電話、E-mail
2. 請註明產品名稱、產品型號、零件名稱、零件型號以及數量
3. 請以傳真、E-mail、電話或上寶工購物網 <https://shop.prokits.com.tw> 訂購

寶工實業股份有限公司

新北市新店區民權路130巷7號5樓

客服專線:02-22183233 分機327

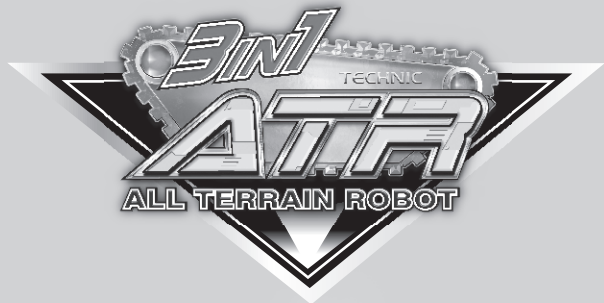
傳 真:02-22180267

E-mail:science@mail.prokits.com.tw

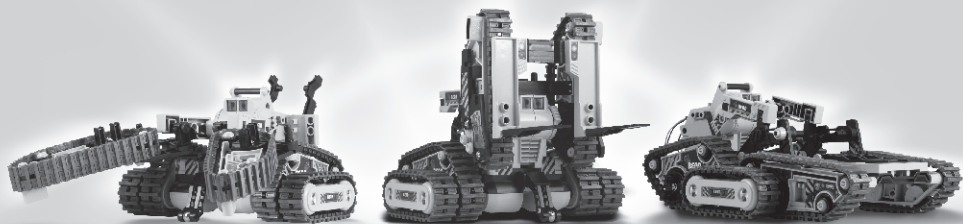
寶工購物網:<https://shop.prokits.com.tw>

GE-536N 三合一變形坦克 零件表

零件型號	零件名稱	數量
5GE-536001(P1)	彈片	
5GE-536002(P2)	自攻螺絲	
5GE-536003(P3)	電池盒	
5GE-536004(P4)	電路板	
5GE-536005	塑膠模型零件E	
5GE-536006	裝飾貼紙	
5GE-536007	馬達端子組(黃/黑)	
5GE-536008	馬達端子組(紅/黑)	
5GE-536009	小齒輪(P3)	
5GE-536010	齒輪(灰色)	
5GE-536011	齒輪(棕色)	
5GE-536012	齒輪(黃色)	
5GE-536013	齒輪(橘色)	
5GE-536014	齒輪(白色)	
5GE-536015	六角軸齒輪組	
5GE-536016	從動齒輪(灰色)	
5GE-536017	自攻螺絲(短)	
5GE-536018	自攻螺絲(長)	
5GE-536019	華司螺絲(2.6x6)	
5GE-536020	六角軸	
5GE-536021	圓軸	
5GE-536022	小鋼珠	
5GE-536023	電路板	
5GE-536024	塑膠模型零件A	
5GE-536025	塑膠模型零件B	
5GE-536026	塑膠模型零件C	
5GE-536027	塑膠模型零件D	
5GE-536028	塑膠模型零件F	
5GE-536029	說明書	



三合一變形坦克



1. 電池移除或更換應由成人或在成人監督下進行。
2. 請避免電池或電池連接器端子短路。
3. 電池長期不用或電力耗盡時請取出以避免電池漏液。
4. 請勿混用新舊電池及不同廠牌、種類的電池，以免造成危險或電器損耗。
5. 電池放入前請先確認正確正負極性方向。
6. 本產品不建議使用充電電池及水銀電池。