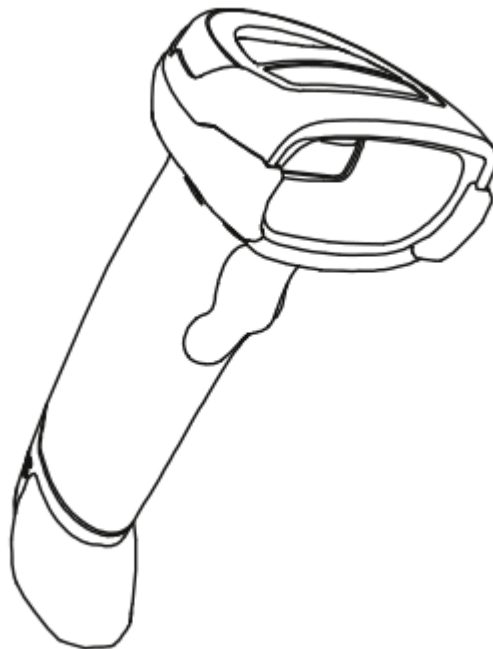




Handheld Barcode Scanner



Virtual Serial Port Driver Manual

Xiamen Hanin Electronic Technology Co.,Ltd

ADD: 5F, 8#, Aide Airport Industrial Park, Huli District, Xiamen, China

Web: www.hpert.com

CONTENT

Software Preparation 3

Software Installation 3

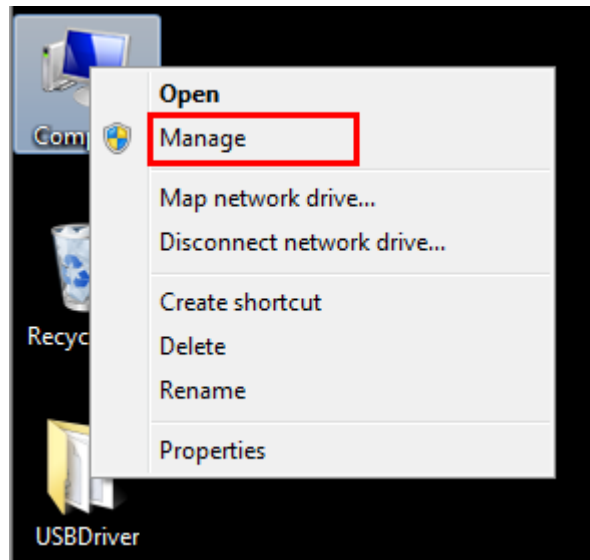
Software Preparation

Unzip the installation package and place it on your computer desktop (It also can be placed in a different computer location depending on your needs).

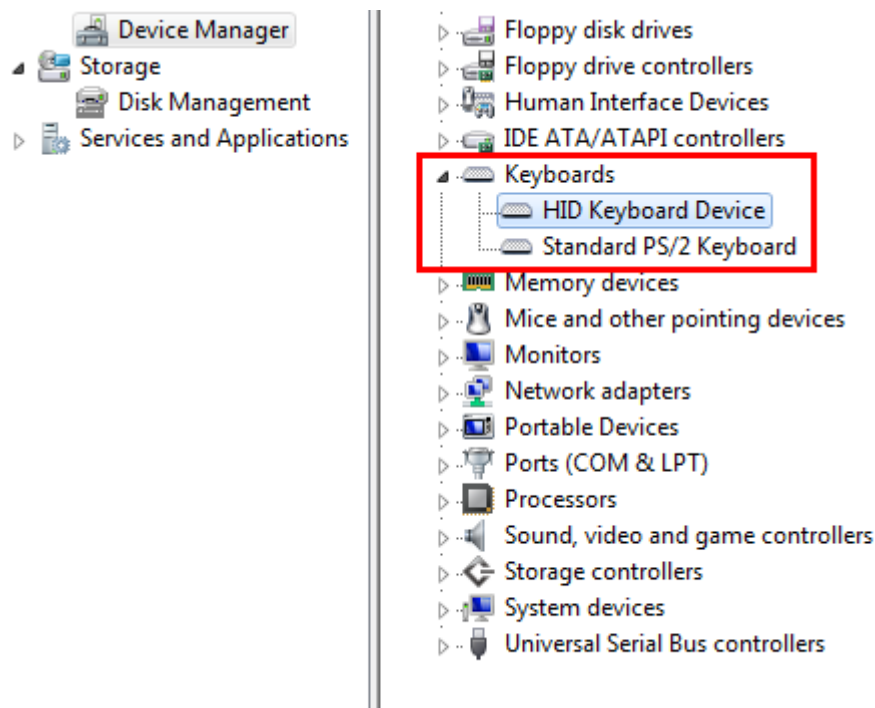


Software Installation

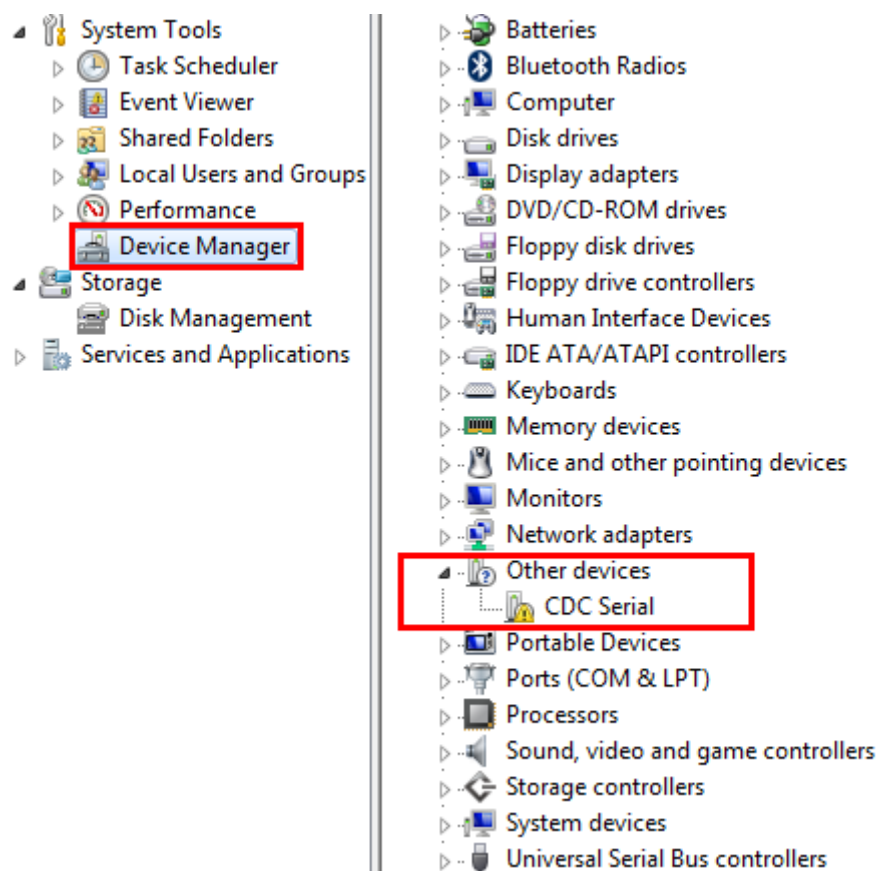
1. Right-click the **Computer** to choose the **Manage**.



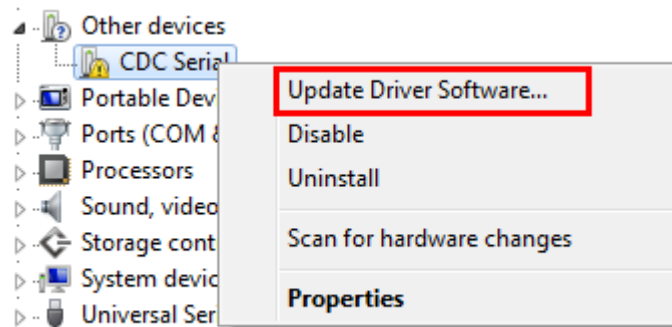
2. Open the **Device Manager**, if the device is in virtual keyboard mode, as follows:



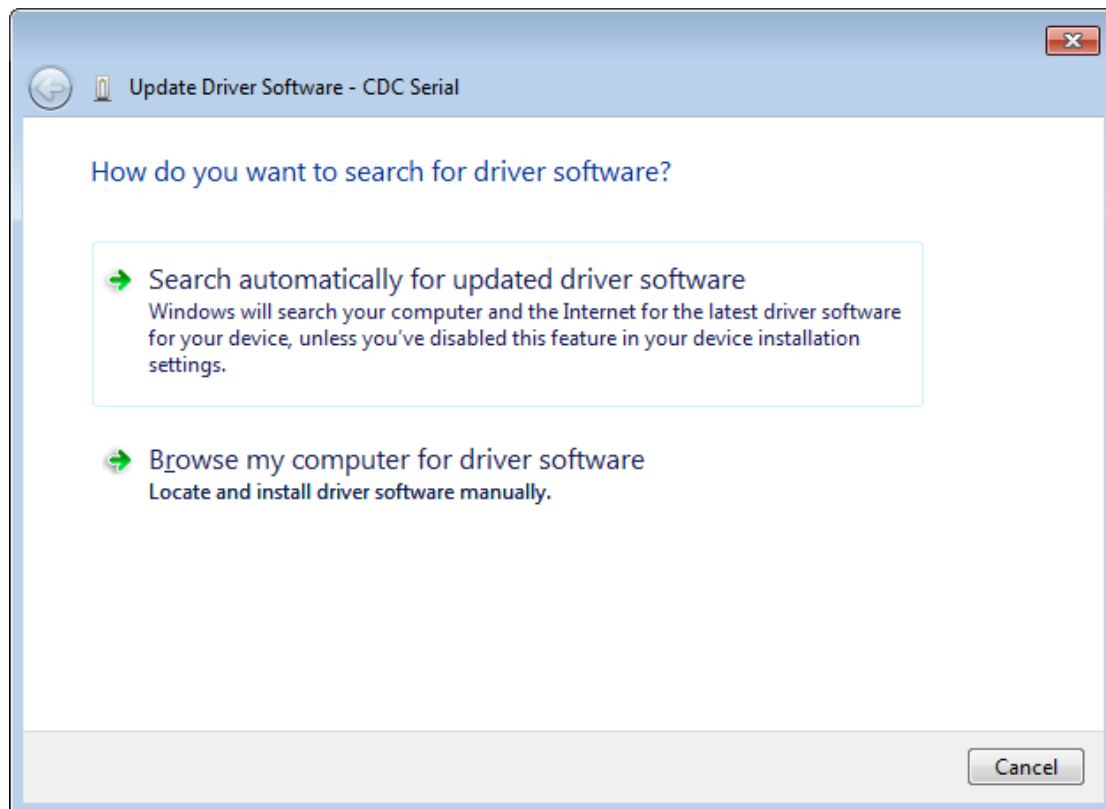
3. If the device is in non-virtual keyboard mode, click **Other Devices**, as follows:



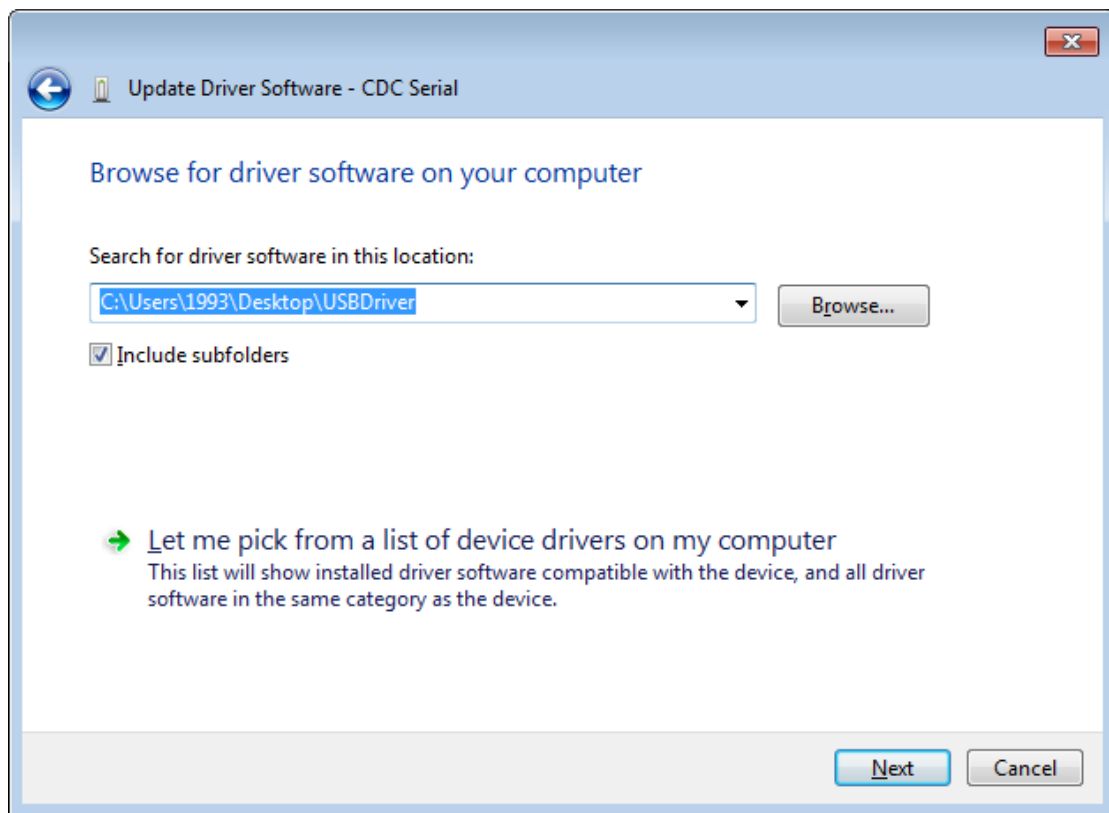
4. Right-click, then select the **Update Driver Software**.



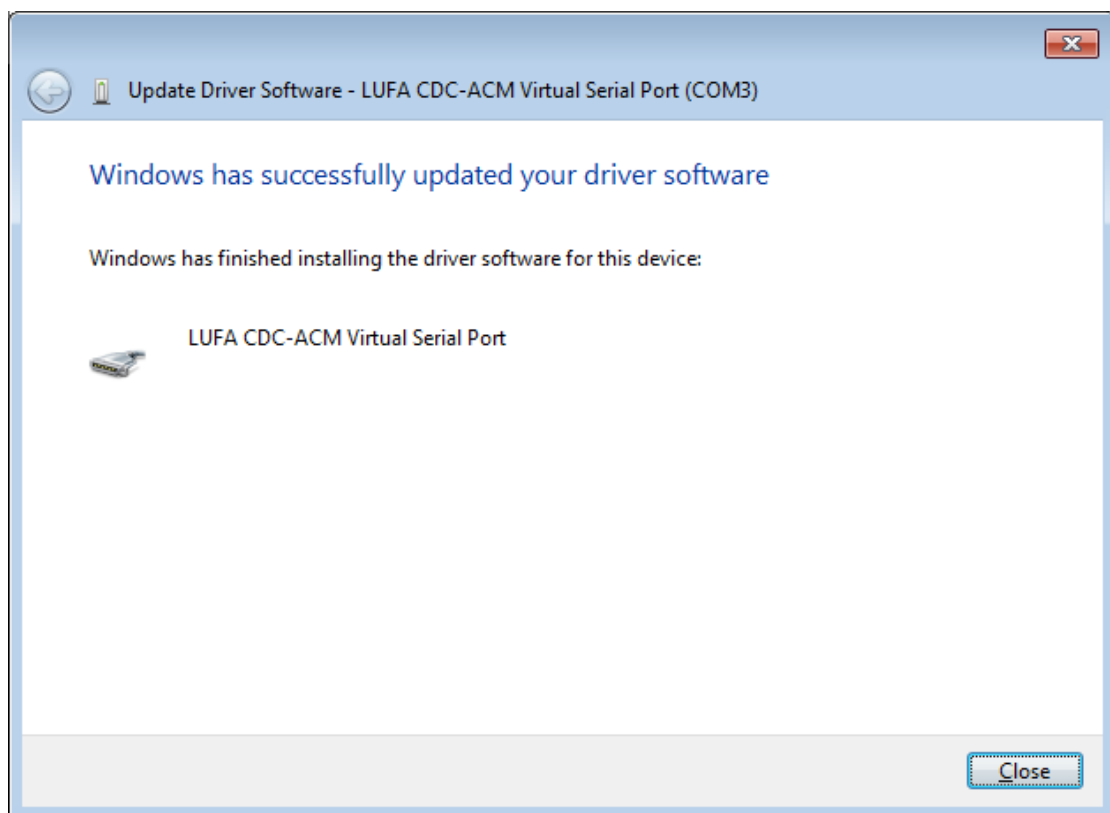
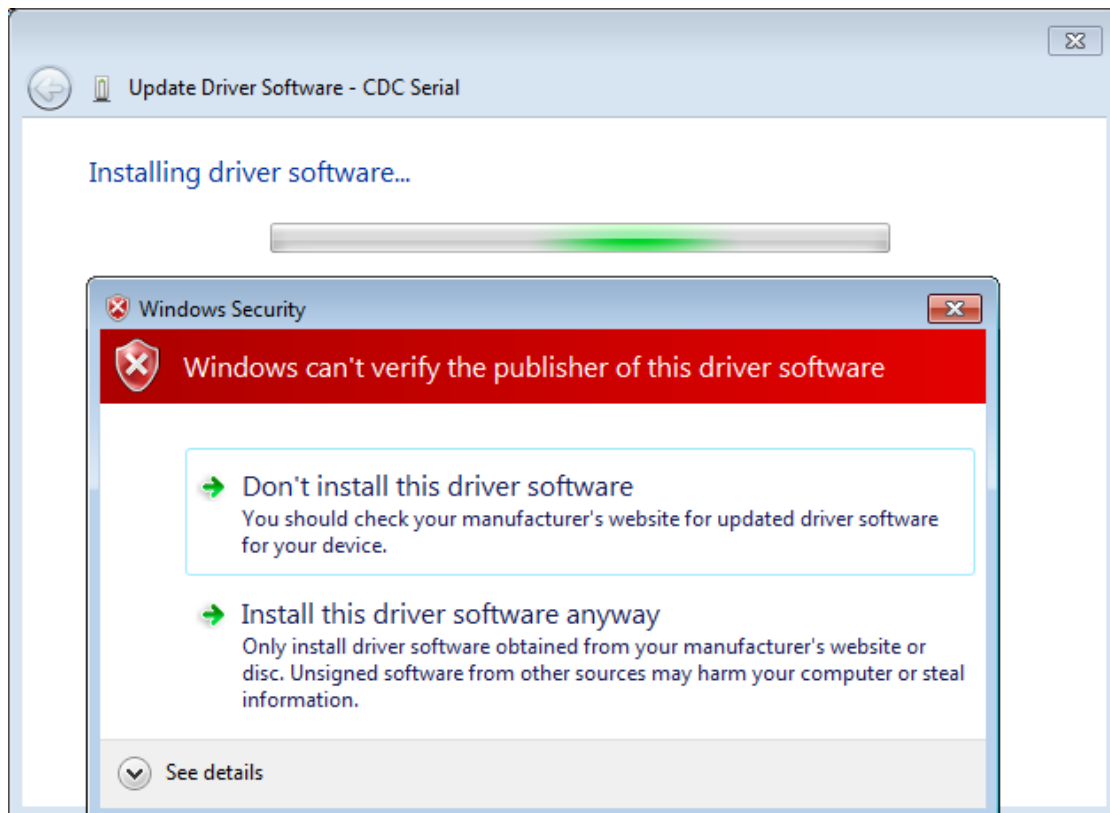
5. Click the **Browse my computer for driver software**.



6. Manually search the driver path and select the location where the driver installation package is placed. Click the **Next**.



7. After clicking the **Next**, the window will pop out of the **Windows Security** prompt and select the **Install this driver software anyway**.



8. After installation, open the **Device Manager** to see if the installation is successful, and if the device is a virtual serial port mode, the following figure:

